

## ARG42068 anti-SLC6A8 antibody

Package: 50 µl  
Store at: -20°C

### Summary

Product Description	Rabbit Polyclonal antibody recognizes SLC6A8
Tested Reactivity	Hu
Predict Reactivity	Ms, Rat, Cow, Dog, Gpig, Hrs, Rb
Tested Application	IHC-P
Host	Rabbit
Clonality	Polyclonal
Isotype	IgG
Target Name	SLC6A8
Species	Human
Immunogen	Synthetic peptide around the N-terminal region of Human SLC6A8. (within the following region: CDQLA DRRSP VIEFW ENKVL RLSGG LEVPG ALNWE VTLCL LACWV LUYFC)
Conjugation	Un-conjugated
Alternate Names	Solute carrier family 6 member 8; CCDS1; CT1; CRT; Creatine transporter 1; CRTR; CTR5; Sodium- and chloride-dependent creatine transporter 1

### Application Instructions

Predict Reactivity Note	Predicted Homology Based on Immunogen Sequence: Cow: 100%; Dog: 100%; Guinea pig: 100%; Horse: 100%; Mouse: 100%; Rabbit: 93%; Rat: 100%				
Application table	<table> <tr> <th>Application</th><th>Dilution</th></tr> <tr> <td>IHC-P</td><td>4 - 8 µg/ml</td></tr> </table>	Application	Dilution	IHC-P	4 - 8 µg/ml
Application	Dilution				
IHC-P	4 - 8 µg/ml				
Application Note	* The dilutions indicate recommended starting dilutions and the optimal dilutions or concentrations should be determined by the scientist.				

### Properties

Form	Liquid
Purification	Purification with Protein A.
Buffer	PBS, 0.09% (w/v) Sodium azide and 2% Sucrose.
Preservative	0.09% (w/v) Sodium azide
Stabilizer	2% Sucrose
Concentration	Batch dependent: 0.5 - 1 mg/ml
Storage instruction	For continuous use, store undiluted antibody at 2-8°C for up to a week. For long-term storage, aliquot and store at -20°C or below. Storage in frost free freezers is not recommended. Avoid repeated freeze/thaw cycles. Suggest spin the vial prior to opening. The antibody solution should be gently mixed

before use.

Note

For laboratory research only, not for drug, diagnostic or other use.

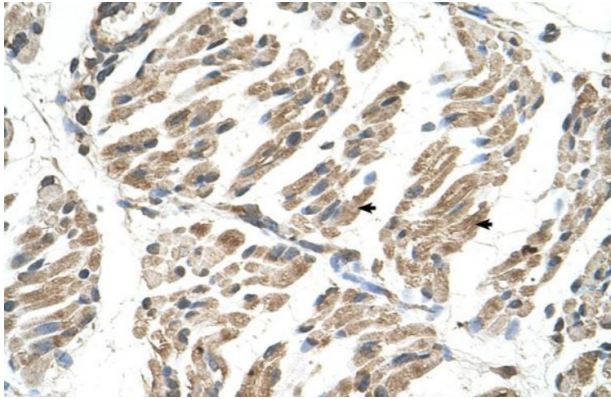
## Bioinformation

---

Gene Symbol	SLC6A8
Gene Full Name	solute carrier family 6 (neurotransmitter transporter), member 8
Background	The protein encoded by this gene is a plasma membrane protein whose function is to transport creatine into and out of cells. Defects in this gene can result in X-linked creatine deficiency syndrome. Multiple transcript variants encoding different isoforms have been found for this gene. [provided by RefSeq, Dec 2008]
Function	Required for the uptake of creatine in muscles and brain. [UniProt]
Calculated Mw	71 kDa
Cellular Localization	Membrane; Multi-pass membrane protein. [UniProt]

## Images

---



ARG42068 anti-SLC6A8 antibody IHC-P image

Immunohistochemistry: Paraffin-embedded Human skeletal muscle tissue stained with ARG42068 anti-SLC6A8 antibody at 4 - 8 µg/ml dilution.