

## ARG42137 anti-eEF1E1 / AIMP3 antibody

Package: 50 µg  
Store at: -20°C

### Summary

Product Description	Goat Polyclonal antibody recognizes eEF1E1 / AIMP3
Tested Reactivity	Hu, Pig
Predict Reactivity	Cow, Dog
Tested Application	IHC-P, WB
Host	Goat
Clonality	Polyclonal
Isotype	IgG
Target Name	eEF1E1 / AIMP3
Species	Human
Immunogen	Synthetic peptide around the internal region of Human eEF1E1 / AIMP3. (C-SKGNKYSAQGERQ) (NP_004271.1; NP_001129122.1)
Conjugation	Un-conjugated
Alternate Names	Eukaryotic translation elongation factor 1 epsilon-1; Elongation factor p18; AIMP3; P18; Multisynthase complex auxiliary component p18; Aminoacyl tRNA synthetase complex-interacting multifunctional protein 3

### Application Instructions

Application table	Application	Dilution
	IHC-P	5 µg/ml
	WB	0.1 - 0.3 µg/ml
Application Note	WB: Recommend incubate at RT for 1h. IHC-P: Antigen Retrieval: Steam tissue section in Citrate buffer (pH 6.0). * The dilutions indicate recommended starting dilutions and the optimal dilutions or concentrations should be determined by the scientist.	
Positive Control	K562 and Pig testis	
Observed Size	~ 20 kDa	

### Properties

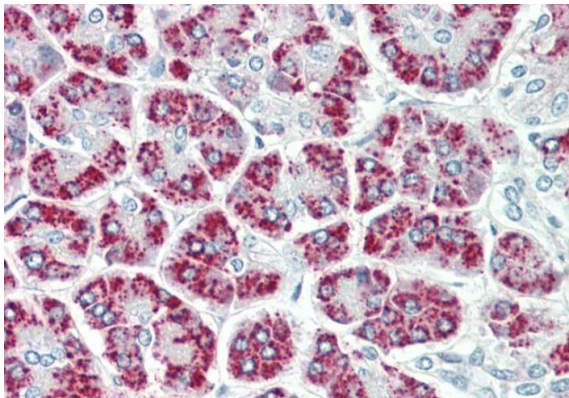
Form	Liquid
Purification	Affinity purified
Buffer	Tris saline (pH 7.3), 0.02% Sodium azide and 0.5% BSA.
Preservative	0.02% Sodium azide
Stabilizer	0.5% BSA

Concentration	0.5 mg/ml
Storage instruction	For continuous use, store undiluted antibody at 2-8°C for up to a week. For long-term storage, aliquot and store at -20°C or below. Storage in frost free freezers is not recommended. Avoid repeated freeze/thaw cycles. Suggest spin the vial prior to opening. The antibody solution should be gently mixed before use.
Note	For laboratory research only, not for drug, diagnostic or other use.

## Bioinformation

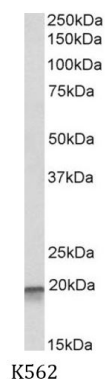
Gene Symbol	EEF1E1
Gene Full Name	eukaryotic translation elongation factor 1 epsilon 1
Background	This gene encodes a multifunctional protein that localizes to both the cytoplasm and nucleus. In the cytoplasm, the encoded protein is an auxiliary component of the macromolecular aminoacyl-tRNA synthase complex. However, its mouse homolog has been shown to translocate to the nucleus in response to DNA damage, and it plays a positive role in ATM/ATR-mediated p53 activation. Alternative splicing results in multiple transcript variants. Read-through transcription also exists between this gene and the neighboring downstream MUTED (muted homolog) gene. An EEF1E1-related pseudogene has been identified on chromosome 2. [provided by RefSeq, Dec 2010]
Function	Positive modulator of ATM response to DNA damage. [UniProt]
Calculated Mw	20 kDa
Cellular Localization	Cytoplasm. Cytoplasm, cytosol. Nucleus. Note=Cytoplasmic under growth arrest conditions. Translocated into the nucleus when growth resumes (S phase) and following DNA damage. [UniProt]

## Images



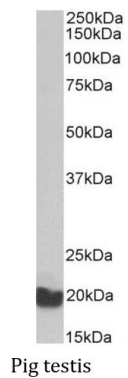
ARG42137 anti-eEF1E1 / AIMP3 antibody IHC-P image

Immunohistochemistry: Paraffin-embedded Human pancreas tissue. Antigen Retrieval: Steam tissue section in Citrate buffer (pH 6.0). The tissue section was stained with ARG42137 anti-eEF1E1 / AIMP3 antibody at 5 µg/ml dilution followed by AP-staining.



ARG42137 anti-eEF1E1 / AIMP3 antibody WB image

Western blot: 35 µg of K562 cell lysate (in RIPA buffer) stained with ARG42137 anti-eEF1E1 / AIMP3 antibody at 0.1 µg/ml dilution and incubated at RT for 1 hour.



#### ARG42137 anti-eEF1E1 / AIMP3 antibody WB image

Western blot: 35 µg of Pig testis lysate (in RIPA buffer) stained with ARG42137 anti-eEF1E1 / AIMP3 antibody at 0.3 µg/ml dilution and incubated at RT for 1 hour.