

ARG42159 anti-RTCB / HSPC117 antibody

Package: 50 µl
Store at: -20°C

Summary

Product Description	Rabbit Polyclonal antibody recognizes RTCB / HSPC117
Tested Reactivity	Hu
Predict Reactivity	Ms, Rat, Cow, Dog, Gpig, Hrs, Rb, Zfsh
Tested Application	IHC-P, WB
Host	Rabbit
Clonality	Polyclonal
Isotype	IgG
Target Name	RTCB / HSPC117
Species	Human
Immunogen	Synthetic peptide around the N-terminal region of Human RTCB / HSPC117. (within the following region: PEAVV SPGGV GFDIN CGVRL LRTNL DESDV QPVKE QLAQA MFDHI PVGVG)
Conjugation	Un-conjugated
Alternate Names	EC 6.5.1.3; HSPC117; DJ149A16.6; C22orf28; tRNA-splicing ligase RtcB homolog; FAAP

Application Instructions

Predict Reactivity Note	Predicted Homology Based on Immunogen Sequence: Cow: 100%; Dog: 100%; Guinea pig: 100%; Horse: 100%; Mouse: 100%; Rabbit: 100%; Rat: 100%; Zebrafish: 93%						
Application table	<table> <tr> <th>Application</th><th>Dilution</th></tr> <tr> <td>IHC-P</td><td>10 µg/ml</td></tr> <tr> <td>WB</td><td>1 µg/ml</td></tr> </table>	Application	Dilution	IHC-P	10 µg/ml	WB	1 µg/ml
Application	Dilution						
IHC-P	10 µg/ml						
WB	1 µg/ml						
Application Note	* The dilutions indicate recommended starting dilutions and the optimal dilutions or concentrations should be determined by the scientist.						
Positive Control	293T						
Observed Size	~ 55 kDa						

Properties

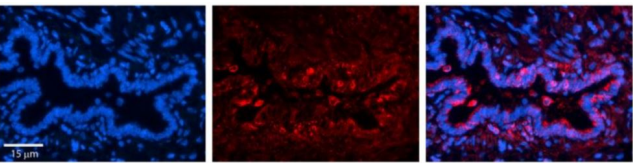
Form	Liquid
Purification	Affinity purified.
Buffer	PBS, 0.09% (w/v) Sodium azide and 2% Sucrose.
Preservative	0.09% (w/v) Sodium azide
Stabilizer	2% Sucrose

Concentration	Batch dependent: 0.5 - 1 mg/ml
Storage instruction	For continuous use, store undiluted antibody at 2-8°C for up to a week. For long-term storage, aliquot and store at -20°C or below. Storage in frost free freezers is not recommended. Avoid repeated freeze/thaw cycles. Suggest spin the vial prior to opening. The antibody solution should be gently mixed before use.
Note	For laboratory research only, not for drug, diagnostic or other use.

Bioinformation

Gene Symbol	RTCB
Gene Full Name	RNA 2',3'-cyclic phosphate and 5'-OH ligase
Function	Catalytic subunit of the tRNA-splicing ligase complex that acts by directly joining spliced tRNA halves to mature-sized tRNAs by incorporating the precursor-derived splice junction phosphate into the mature tRNA as a canonical 3',5'-phosphodiester. May act as an RNA ligase with broad substrate specificity, and may function toward other RNAs. [UniProt]
Calculated Mw	55 kDa
Cellular Localization	Nucleus. Cytoplasm. Note=Enters into the nucleus in case of active transcription while it accumulates in cytosol when transcription level is low. [UniProt]

Images



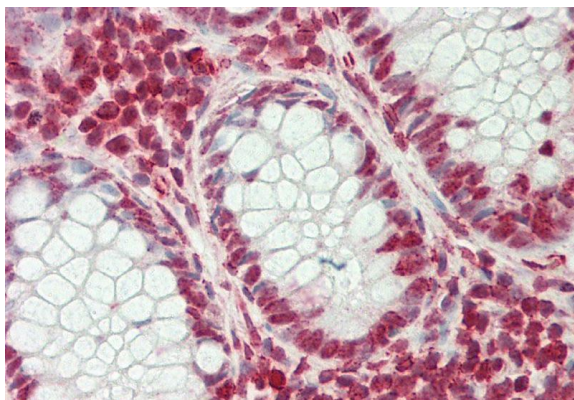
ARG42159 anti-RTCB / HSPC117 antibody IHC-P image

Immunohistochemistry: Formalin-fixed and paraffin-embedded Human bronchial epithelial tissue stained with ARG42159 anti-RTCB / HSPC117 antibody (red) at 1:100 dilution.



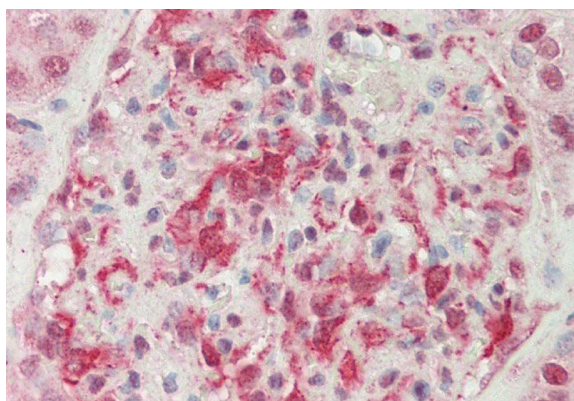
ARG42159 anti-RTCB / HSPC117 antibody WB image

Western blot: 293T cell lysate stained with ARG42159 anti-RTCB / HSPC117 antibody at 1 μg/ml dilution.



ARG42159 anti-RTCB / HSPC117 antibody IHC-P image

Immunohistochemistry: Formalin-fixed and paraffin-embedded Human colon tissue stained with ARG42159 anti-RTCB / HSPC117 antibody at 10 µg/ml dilution.



ARG42159 anti-RTCB / HSPC117 antibody IHC-P image

Immunohistochemistry: Formalin-fixed and paraffin-embedded Human kidney tissue stained with ARG42159 anti-RTCB / HSPC117 antibody at 10 µg/ml dilution.
