

ARG42166 anti-MOB2 / HCCA2 antibody

Package: 100 µl
Store at: -20°C

Summary

Product Description	Rabbit Polyclonal antibody recognizes MOB2 / HCCA2
Tested Reactivity	Hu
Tested Application	FACS, IHC-P, WB
Host	Rabbit
Clonality	Polyclonal
Isotype	IgG
Target Name	MOB2 / HCCA2
Species	Human
Immunogen	KLH-conjugated synthetic peptide between aa. 5-32 of Human MOB2 / HCCA2.
Conjugation	Un-conjugated
Alternate Names	MOB kinase activator 2; Mps one binder kinase activator-like 2; HCCA2; Mob2 homolog

Application Instructions

Application table	Application	Dilution
	FACS	1:10 - 1:50
	IHC-P	1:50 - 1:100
	WB	1:1000
Application Note	* The dilutions indicate recommended starting dilutions and the optimal dilutions or concentrations should be determined by the scientist.	
Positive Control	HeLa	
Observed Size	~ 24 kDa	

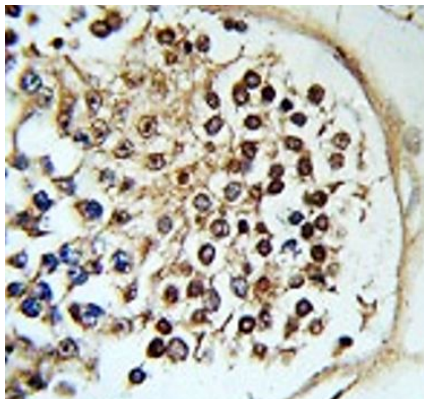
Properties

Form	Liquid
Purification	Purification with Protein A and immunogen peptide.
Buffer	PBS and 0.09% (W/V) Sodium azide.
Preservative	0.09% (W/V) Sodium azide
Storage instruction	For continuous use, store undiluted antibody at 2-8°C for up to a week. For long-term storage, aliquot and store at -20°C or below. Storage in frost free freezers is not recommended. Avoid repeated freeze/thaw cycles. Suggest spin the vial prior to opening. The antibody solution should be gently mixed before use.
Note	For laboratory research only, not for drug, diagnostic or other use.

Bioinformation

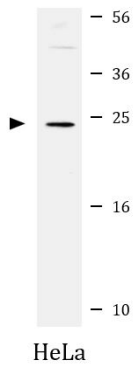
Gene Symbol	MOB2
Gene Full Name	MOB kinase activator 2
Function	Stimulates the autophosphorylation and kinase activity of STK38 and STK38L. [UniProt]
Calculated Mw	27 kDa
PTM	Phosphorylated. [UniProt]
Cellular Localization	Nucleus. Cytoplasm, perinuclear region. [UniProt]

Images



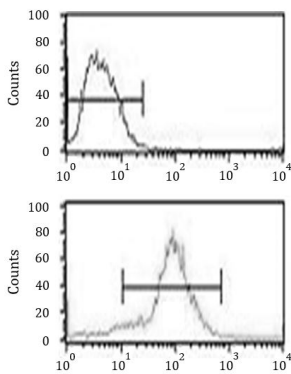
ARG42166 anti-MOB2 / HCCA2 antibody IHC-P image

Immunohistochemistry: Formalin-fixed and paraffin-embedded Human testis tissue stained with ARG42166 anti-MOB2 / HCCA2 antibody.



ARG42166 anti-MOB2 / HCCA2 antibody WB image

Western blot: 35 µg of HeLa cell lysate stained with ARG42166 anti-MOB2 / HCCA2 antibody at 1:1000 dilution.



ARG42166 anti-MOB2 / HCCA2 antibody FACS image

Flow Cytometry: MCF7 cells stained with ARG42166 anti-MOB2 / HCCA2 antibody (bottom histogram) or without primary antibody as control (top histogram), followed by incubation with FITC labelled secondary antibody.