

ARG42209 anti-ITFG1 antibody

Package: 100 µl
Store at: -20°C

Summary

Product Description	Rabbit Polyclonal antibody recognizes ITFG1
Tested Reactivity	Hu, Ms, Rat
Tested Application	WB
Host	Rabbit
Clonality	Polyclonal
Isotype	IgG
Target Name	ITFG1
Species	Human
Immunogen	Recombinant fusion protein corresponding to aa. 313-612 of Human ITFG1 (NP_110417.2).
Conjugation	Un-conjugated
Alternate Names	Integrin-alpha FG-GAP repeat-containing protein 1; TIP; T-cell immunomodulatory protein; Protein TIP; 2310047C21Rik; CDA08

Application Instructions

Application table	<table> <tr> <th>Application</th><th>Dilution</th></tr> <tr> <td>WB</td><td>1:500 - 1:2000</td></tr> </table>	Application	Dilution	WB	1:500 - 1:2000
Application	Dilution				
WB	1:500 - 1:2000				
Application Note	* The dilutions indicate recommended starting dilutions and the optimal dilutions or concentrations should be determined by the scientist.				
Positive Control	A431				
Observed Size	~ 80 kDa				

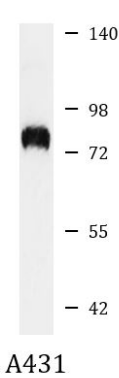
Properties

Form	Liquid
Purification	Affinity purified.
Buffer	PBS (pH 7.3), 0.02% Sodium azide and 50% Glycerol.
Preservative	0.02% Sodium azide
Stabilizer	50% Glycerol
Storage instruction	For continuous use, store undiluted antibody at 2-8°C for up to a week. For long-term storage, aliquot and store at -20°C. Storage in frost free freezers is not recommended. Avoid repeated freeze/thaw cycles. Suggest spin the vial prior to opening. The antibody solution should be gently mixed before use.
Note	For laboratory research only, not for drug, diagnostic or other use.

Bioinformation

Gene Symbol	ITFG1
Gene Full Name	integrin alpha FG-GAP repeat containing 1
Function	Modulator of T-cell function. Has a protective effect in graft versus host disease model (By similarity). [UniProt]
Calculated Mw	68 kDa
Cellular Localization	Secreted. Membrane; Single-pass type I membrane protein. [UniProt]

Images



ARG42209 anti-ITFG1 antibody WB image

Western blot: 25 µg of A431 cell lysate stained with ARG42209 anti-ITFG1 antibody at 1:1000 dilution.