

ARG42226 anti-MTHFD1L antibody

Package: 50 µg
Store at: -20°C

Summary

Product Description	Goat Polyclonal antibody recognizes MTHFD1L
Tested Reactivity	Hu, Ms, Rat
Predict Reactivity	Cow, Dog, Pig
Tested Application	IHC-P, WB
Host	Goat
Clonality	Polyclonal
Isotype	IgG
Target Name	MTHFD1L
Species	Human
Immunogen	Synthetic peptide around the internal region of Human MTHFD1L. (C-DTNDRLRKITIGQ) (NP_056255.2)
Conjugation	Un-conjugated
Alternate Names	MTC1THFS; dJ292B18.2; Formyltetrahydrofolate synthetase; EC 6.3.4.3; Monofunctional C1-tetrahydrofolate synthase, mitochondrial; FTHFSDC1

Application Instructions

Application table	Application	Dilution
	IHC-P	5 µg/ml
	WB	0.1 - 0.3 µg/ml
Application Note	IHC-P: Antigen Retrieval: Steam tissue section in Citrate buffer (pH 6.0). WB: Recommend incubate at RT for 1h. * The dilutions indicate recommended starting dilutions and the optimal dilutions or concentrations should be determined by the scientist.	
Observed Size	~ 110 kDa	

Properties

Form	Liquid
Purification	Affinity purified
Buffer	Tris saline (pH 7.3), 0.02% Sodium azide and 0.5% BSA.
Preservative	0.02% Sodium azide
Stabilizer	0.5% BSA
Concentration	0.5 mg/ml
Storage instruction	For continuous use, store undiluted antibody at 2-8°C for up to a week. For long-term storage, aliquot and store at -20°C or below. Storage in frost free freezers is not recommended. Avoid repeated

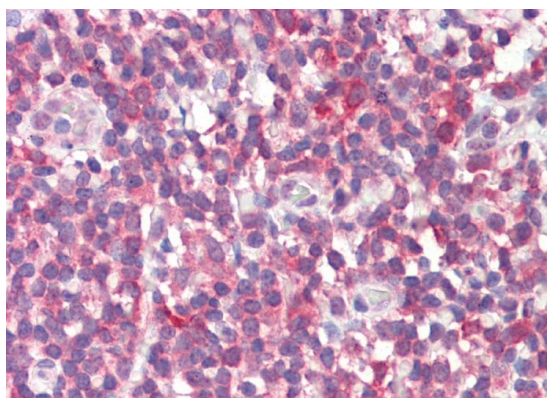
freeze/thaw cycles. Suggest spin the vial prior to opening. The antibody solution should be gently mixed before use.

Note For laboratory research only, not for drug, diagnostic or other use.

Bioinformation

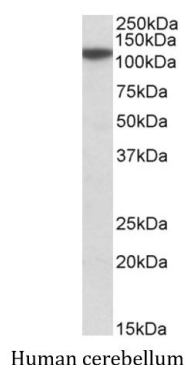
Gene Symbol	MTHFD1L
Gene Full Name	methylenetetrahydrofolate dehydrogenase (NADP+ dependent) 1-like
Background	The protein encoded by this gene is involved in the synthesis of tetrahydrofolate (THF) in the mitochondrion. THF is important in the de novo synthesis of purines and thymidylate and in the regeneration of methionine from homocysteine. Several transcript variants encoding different isoforms have been found for this gene. [provided by RefSeq, Jun 2011]
Function	May provide the missing metabolic reaction required to link the mitochondria and the cytoplasm in the mammalian model of one-carbon folate metabolism in embryonic an transformed cells complementing thus the enzymatic activities of MTHFD2. [UniProt]
Calculated Mw	106 kDa
Cellular Localization	Mitochondrion. [UniProt]

Images



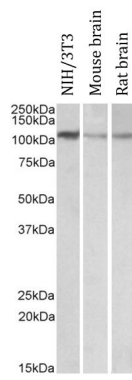
ARG42226 anti-MTHFD1L antibody IHC-P image

Immunohistochemistry: Paraffin-embedded Human tonsil tissue. Antigen Retrieval: Steam tissue section in Citrate buffer (pH 6.0). The tissue section was stained with ARG42226 anti-MTHFD1L antibody at 5 µg/ml dilution followed by AP-staining.



ARG42226 anti-MTHFD1L antibody WB image

Western blot: 35 µg of Human cerebellum lysate (in RIPA buffer) stained with ARG42226 anti-MTHFD1L antibody at 0.1 µg/ml dilution and incubated at RT for 1 hour.



ARG42226 anti-MTHFD1L antibody WB image

Western blot: 35 µg of NIH/3T3, Mouse brain and Rat brain lysates (in RIPA buffer) stained with ARG42226 anti-MTHFD1L antibody at 0.1 µg/ml dilution and incubated at RT for 1 hour.