

## ARG42230 anti-NSG1 / D4S234E antibody

Package: 50 µg  
Store at: -20°C

### Summary

Product Description	Goat Polyclonal antibody recognizes NSG1 / D4S234E
Tested Reactivity	Hu, Ms, Rat
Predict Reactivity	Cow
Tested Application	ICC/IF, WB
Host	Goat
Clonality	Polyclonal
Isotype	IgG
Target Name	NSG1 / D4S234E
Species	Rat
Immunogen	Synthetic peptide around the N-terminus of Rat NSG1 / D4S234E. (EKGTKQPLLEDGFD-C) (NP_077042.2)
Conjugation	Un-conjugated
Alternate Names	NEEP21; Neuron-specific protein family member 1; D4S234E; Brain neuron cytoplasmic protein 1; P21; D4S234

### Application Instructions

Application table	Application	Dilution
	ICC/IF	1 - 5 µg/ml
	WB	0.1 - 0.3 µg/ml
Application Note	WB: Recommend incubate at RT for 1h. * The dilutions indicate recommended starting dilutions and the optimal dilutions or concentrations should be determined by the scientist.	
Positive Control	Fetal Mouse brain	
Observed Size	~ 21 kDa	

### Properties

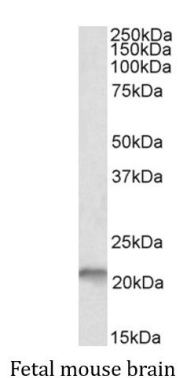
Form	Liquid
Purification	Affinity purified
Buffer	Tris saline (pH 7.3), 0.02% Sodium azide and 0.5% BSA.
Preservative	0.02% Sodium azide
Stabilizer	0.5% BSA
Concentration	0.5 mg/ml

Storage instruction	For continuous use, store undiluted antibody at 2-8°C for up to a week. For long-term storage, aliquot and store at -20°C or below. Storage in frost free freezers is not recommended. Avoid repeated freeze/thaw cycles. Suggest spin the vial prior to opening. The antibody solution should be gently mixed before use.
Note	For laboratory research only, not for drug, diagnostic or other use.

## Bioinformation

Gene Symbol	NSG1
Gene Full Name	neuron specific gene family member 1
Function	Plays a role in the recycling mechanism in neurons of multiple receptors, including AMPAR, APP and L1CAM and acts at the level of early endosomes to promote sorting of receptors toward a recycling pathway. Regulates sorting and recycling of GRIA2 through interaction with GRIP1 and then contributes to the regulation of synaptic transmission and plasticity by affecting the recycling and targeting of AMPA receptors to the synapse (By similarity). Is required for faithful sorting of L1CAM to axons by facilitating trafficking from somatodendritic early endosome or the recycling endosome (By similarity). In an other hand, induces apoptosis via the activation of CASP3 in response to DNA damage (PubMed:20599942, PubMed:20878061). [UniProt]
Calculated Mw	21 kDa
Cellular Localization	Membrane; Single-pass type II membrane protein. Golgi apparatus, trans-Golgi network membrane. Endosome membrane. Cell projection, dendrite. Early endosome membrane. Late endosome membrane. Lysosome lumen. Recycling endosome membrane. Cytoplasmic vesicle membrane. Golgi apparatus, Golgi stack membrane. Endosome, multivesicular body membrane. Endoplasmic reticulum membrane. [UniProt]

## Images



ARG42230 anti-NSG1 / D4S234E antibody WB image

Western blot: 35 µg of fetal mouse brain lysate (in RIPA buffer) stained with ARG42230 anti-NSG1 / D4S234E antibody at 0.1 µg/ml dilution and incubated at RT for 1 hour.