

## ARG42233 anti-NPTX1 / NP1 antibody

Package: 50 µg  
Store at: -20°C

### Summary

Product Description	Goat Polyclonal antibody recognizes NPTX1 / NP1
Tested Reactivity	Hu
Tested Application	IHC-P, WB
Host	Goat
Clonality	Polyclonal
Isotype	IgG
Target Name	NPTX1 / NP1
Species	Human
Immunogen	Synthetic peptide around the internal region of Human NPTX1 / NP1. (C-ERVKIETALTSLHQR) (NP_002513.2)
Conjugation	Un-conjugated
Alternate Names	Neuronal pentraxin-1; NP-I; NP1; Neuronal pentraxin I

### Application Instructions

Application table	Application	Dilution
	IHC-P	5 µg/ml
	WB	1 - 3 µg/ml
Application Note	IHC-P: Antigen Retrieval: Steam tissue section in Citrate buffer (pH 6.0). WB: Recommend incubate at RT for 1h. * The dilutions indicate recommended starting dilutions and the optimal dilutions or concentrations should be determined by the scientist.	
Positive Control	Human frontal cortex	
Observed Size	~ 50 kDa	

### Properties

Form	Liquid
Purification	Affinity purified
Buffer	Tris saline (pH 7.3), 0.02% Sodium azide and 0.5% BSA.
Preservative	0.02% Sodium azide
Stabilizer	0.5% BSA
Concentration	0.5 mg/ml
Storage instruction	For continuous use, store undiluted antibody at 2-8°C for up to a week. For long-term storage, aliquot and store at -20°C or below. Storage in frost free freezers is not recommended. Avoid repeated

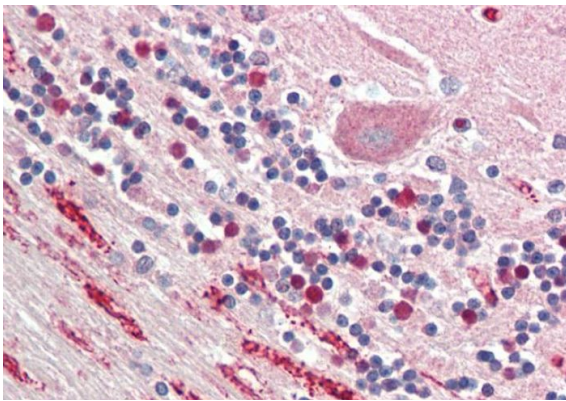
freeze/thaw cycles. Suggest spin the vial prior to opening. The antibody solution should be gently mixed before use.

**Note** For laboratory research only, not for drug, diagnostic or other use.

## Bioinformation

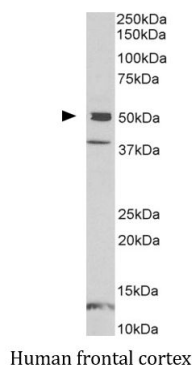
Gene Symbol	NPTX1
Gene Full Name	neuronal pentraxin I
Background	NPTX1 is a member of the neuronal pentraxin gene family. Neuronal pentraxin 1 is similar to the rat NP1 gene which encodes a binding protein for the snake venom toxin taipoxin. Human NPTX1 mRNA is exclusively localized to the nervous system. [provided by RefSeq, Jul 2008]
Function	May be involved in mediating uptake of synaptic material during synapse remodeling or in mediating the synaptic clustering of AMPA glutamate receptors at a subset of excitatory synapses. [UniProt]
Calculated Mw	47 kDa
Cellular Localization	Cytoplasmic vesicle, secretory vesicle. [UniProt]

## Images



ARG42233 anti-NPTX1 / NP1 antibody IHC-P image

Immunohistochemistry: Paraffin-embedded Human cerebellum tissue. Antigen Retrieval: Steam tissue section in Citrate buffer (pH 6.0). The tissue section was stained with ARG42233 anti-NPTX1 / NP1 antibody at 5 µg/ml dilution followed by AP-staining.



ARG42233 anti-NPTX1 / NP1 antibody WB image

Western blot: 35 µg of Human frontal cortex lysate (in RIPA buffer) stained with ARG42233 anti-NPTX1 / NP1 antibody at 1 µg/ml dilution and incubated at RT for 1 hour.