

ARG42264 anti-CD24 antibody [SN3] (APC)

Package: 50 tests
Store at: 4°C

Summary

Product Description	APC-conjugated Mouse Monoclonal antibody [SN3] recognizes CD24
Tested Reactivity	Hu
Tested Application	FACS
Specificity	The antibody SN3 reacts with CD24, a 35-45 kDa heavily glycosylated cell surface antigen. CD24 is expressed by granulocytes, B lymphocytes and by some activated T cells and T cell malignancies. It is not expressed on human thymocytes.
Host	Mouse
Clonality	Monoclonal
Clone	SN3
Isotype	IgG1
Target Name	CD24
Species	Human
Immunogen	Glycoproteins purified from Human NALM-1 cell line.
Conjugation	APC
Alternate Names	Signal transducer CD24; CD antigen CD24; CD24A; Small cell lung carcinoma cluster 4 antigen

Application Instructions

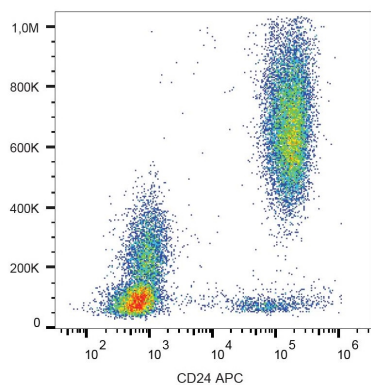
Application table	Application	Dilution
	FACS	10 µl / 100 µl of whole blood or 10 ⁶ cells
Application Note	* The dilutions indicate recommended starting dilutions and the optimal dilutions or concentrations should be determined by the scientist.	

Properties

Form	Liquid
Purification	Purified
Buffer	PBS and 15 mM Sodium azide.
Preservative	15 mM Sodium azide
Storage instruction	Aliquot and store in the dark at 2-8°C. Keep protected from prolonged exposure to light. Avoid repeated freeze/thaw cycles. Suggest spin the vial prior to opening. The antibody solution should be gently mixed before use.
Note	For laboratory research only, not for drug, diagnostic or other use.

Gene Symbol	CD24
Gene Full Name	CD24 molecule
Background	This gene encodes a sialoglycoprotein that is expressed on mature granulocytes and B cells and modulates growth and differentiation signals to these cells. The precursor protein is cleaved to a short 32 amino acid mature peptide which is anchored via a glycosyl phosphatidylinositol (GPI) link to the cell surface. This gene was missing from previous genome assemblies, but is properly located on chromosome 6. Non-transcribed pseudogenes have been designated on chromosomes 1, 15, 20, and Y. Alternative splicing results in multiple transcript variants. [provided by RefSeq, Apr 2014]
Function	May have a pivotal role in cell differentiation of different cell types. Signaling could be triggered by the binding of a lectin-like ligand to the CD24 carbohydrates, and transduced by the release of second messengers derived from the GPI-anchor. Modulates B-cell activation responses. Promotes AG-dependent proliferation of B-cells, and prevents their terminal differentiation into antibody-forming cells (PubMed:11313396). In association with SIGLEC10 may be involved in the selective suppression of the immune response to danger-associated molecular patterns (DAMPs) such as HMGB1, HSP70 and HSP90. Plays a role in the control of autoimmunity (By similarity). [UniProt]
Calculated Mw	8 kDa
PTM	Extensively O-glycosylated. [UniProt]
Cellular Localization	Cell membrane; Lipid-anchor, GPI-anchor. [UniProt]

Images



ARG42264 anti-CD24 antibody [SN3] (APC) FACS image

Flow Cytometry: Human peripheral blood cells stained with ARG42264 anti-CD24 antibody [SN3] (APC).