

ARG42338 anti-CD274 / PD-L1 antibody [29E.2A3] (PE)

Package: 50 tests
Store at: 4°C

Summary

Product Description	PE-conjugated Mouse Monoclonal antibody [29E.2A3] recognizes CD274 / PD-L1
Tested Reactivity	Hu, NHuPrm
Tested Application	FACS
Specificity	The mouse monoclonal antibody 29E.2A3 recognizes an extracellular epitope of CD274 / PD-L1 (also known as B7-H1), a 40 kDa type I transmembrane protein expressed by dendritic cells, activated T cells, activated monocytes, and in various tissues, above all in heart and skeletal muscle, placenta and lung, and in many cancer cells, including T cell lymphomas, melanomas, and glioblastomas.
Host	Mouse
Clonality	Monoclonal
Clone	29E.2A3
Isotype	IgG2b, kappa
Target Name	CD274 / PD-L1
Species	Human
Immunogen	Full length Human CD274.
Conjugation	PE
Alternate Names	Programmed cell death 1 ligand 1; B7-H1; B7H1; PDL1; PDCD1 ligand 1; B7 homolog 1; PD-L1; CD antigen CD274; PDCD1L1; B7-H; Programmed death ligand 1; PDCD1LG1

Application Instructions

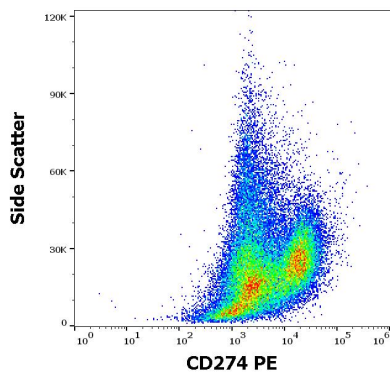
Application table	<table> <tr> <th>Application</th><th>Dilution</th></tr> <tr> <td>FACS</td><td>10 µl / 100 µl of whole blood or 10⁶ cells</td></tr> </table>	Application	Dilution	FACS	10 µl / 100 µl of whole blood or 10 ⁶ cells
Application	Dilution				
FACS	10 µl / 100 µl of whole blood or 10 ⁶ cells				
Application Note	* The dilutions indicate recommended starting dilutions and the optimal dilutions or concentrations should be determined by the scientist.				

Properties

Form	Liquid
Purification	Purified
Buffer	PBS and 15 mM Sodium azide.
Preservative	15 mM Sodium azide
Storage instruction	Aliquot and store in the dark at 2-8°C. Keep protected from prolonged exposure to light. Avoid repeated freeze/thaw cycles. Suggest spin the vial prior to opening. The antibody solution should be gently mixed before use.
Note	For laboratory research only, not for drug, diagnostic or other use.

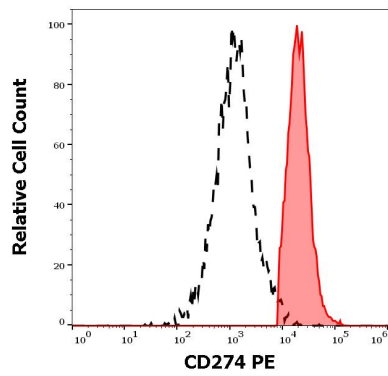
Gene Symbol	CD274
Gene Full Name	CD274 molecule
Background	<p>This gene encodes an immune inhibitory receptor ligand that is expressed by hematopoietic and non-hematopoietic cells, such as T cells and B cells and various types of tumor cells. The encoded protein is a type I transmembrane protein that has immunoglobulin V-like and C-like domains. Interaction of this ligand with its receptor inhibits T-cell activation and cytokine production. During infection or inflammation of normal tissue, this interaction is important for preventing autoimmunity by maintaining homeostasis of the immune response. In tumor microenvironments, this interaction provides an immune escape for tumor cells through cytotoxic T-cell inactivation. Expression of this gene in tumor cells is considered to be prognostic in many types of human malignancies, including colon cancer and renal cell carcinoma. Alternative splicing results in multiple transcript variants. [provided by RefSeq, Sep 2015]</p>
Function	<p>Plays a critical role in induction and maintenance of immune tolerance to self (PubMed:11015443, PubMed:28813417, PubMed:28813410). As a ligand for the inhibitory receptor PDCD1/PD-1, modulates the activation threshold of T-cells and limits T-cell effector response (PubMed:11015443, PubMed:28813417, PubMed:28813410). Through a yet unknown activating receptor, may costimulate T-cell subsets that predominantly produce interleukin-10 (IL10) (PubMed:10581077).</p> <p>The PDCD1-mediated inhibitory pathway is exploited by tumors to attenuate anti-tumor immunity and escape destruction by the immune system, thereby facilitating tumor survival (PubMed:28813417, PubMed:28813410). The interaction with PDCD1/PD-1 inhibits cytotoxic T lymphocytes (CTLs) effector function (By similarity). The blockage of the PDCD1-mediated pathway results in the reversal of the exhausted T-cell phenotype and the normalization of the anti-tumor response, providing a rationale for cancer immunotherapy (By similarity). [UniProt]</p>
Highlight	<p>Related products: PD-L1 antibodies; PD-L1 ELISA Kits; Anti-Mouse IgG secondary antibodies; Related news: Examining CTL/NK-mediated cytotoxicity by ELISA</p>
Calculated Mw	33 kDa
Cellular Localization	<p>Cell membrane; Single-pass type I membrane protein. Early endosome membrane; Single-pass type I membrane protein. Recycling endosome membrane; Single-pass type I membrane protein. Note=Associates with CMTM6 at recycling endosomes, where it is protected from being targeted for lysosomal degradation. Isoform 1: Cell membrane; Single-pass type I membrane protein. Isoform 2: Endomembrane system; Single-pass type I membrane protein. [UniProt]</p>

Images



ARG42338 anti-CD274 / PD-L1 antibody [29E.2A3] (PE) FACS image

Flow Cytometry: Human PHA stimulated peripheral blood mononuclear cell suspension stained with ARG42338 anti-CD274 / PD-L1 antibody [29E.2A3] (PE) at 10 µl / 10⁶ cells in 100 µl of cell suspension.



ARG42338 anti-CD274 / PD-L1 antibody [29E.2A3] (PE) FACS image

Flow Cytometry: Separation of Human CD274 positive cells (red-filled) from cellular debris (black-dashed). Human PHA stimulated peripheral blood mononuclear cell suspension stained with ARG42338 anti-CD274 / PD-L1 antibody [29E.2A3] (PE) at 10 μ l / 10^6 cells in 100 μ l of cell suspension.