

ARG42339 anti-CD273 / PD-L2 antibody [24F.10C12] (PE)

Package: 50 tests
Store at: 4°C

Summary

Product Description	PE-conjugated Mouse Monoclonal antibody [24F.10C12] recognizes CD273 / PD-L2
Tested Reactivity	Hu
Tested Application	FACS
Specificity	The mouse monoclonal antibody 24F.10C12 recognizes an extracellular epitope of CD273 / PD-L2 (also known as B7-DC), a 25 kDa type I transmembrane protein expressed by dendritic cells, activated monocytes and T cells, heart, first trimester placenta, lung and liver, as well as in Hodgkin's lymphoma cells and primary mediastinal B cell lymphoma (PMBL).
Host	Mouse
Clonality	Monoclonal
Clone	24F.10C12
Isotype	IgG2a, kappa
Target Name	CD273 / PD-L2
Species	Human
Immunogen	Human CD273.
Conjugation	PE
Alternate Names	B7DC; bA574F11.2; PDL2; CD antigen CD273; PD-L2; Programmed cell death 1 ligand 2; CD273; Btdc; PDCD1L2; Programmed death ligand 2; Butyrophilin B7-DC; B7-DC; PD-1 ligand 2; PDCD1 ligand 2

Application Instructions

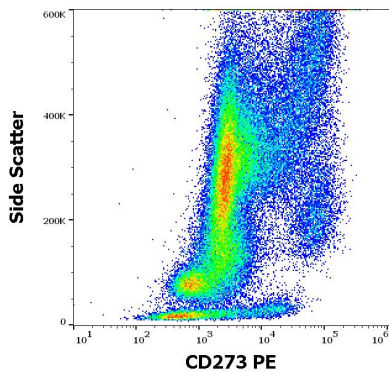
Application table	Application	Dilution
	FACS	10 µl / 100 µl of whole blood or 10 ⁶ cells
Application Note	* The dilutions indicate recommended starting dilutions and the optimal dilutions or concentrations should be determined by the scientist.	

Properties

Form	Liquid
Purification	Purified
Buffer	PBS and 15 mM Sodium azide.
Preservative	15 mM Sodium azide
Storage instruction	Aliquot and store in the dark at 2-8°C. Keep protected from prolonged exposure to light. Avoid repeated freeze/thaw cycles. Suggest spin the vial prior to opening. The antibody solution should be gently mixed before use.
Note	For laboratory research only, not for drug, diagnostic or other use.

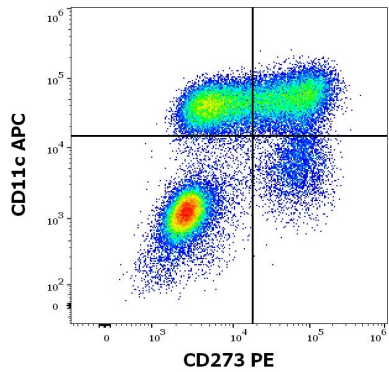
Gene Symbol	PDCD1LG2
Gene Full Name	programmed cell death 1 ligand 2
Function	Involved in the costimulatory signal, essential for T-cell proliferation and IFNG production in a PDCD1-independent manner. Interaction with PDCD1 inhibits T-cell proliferation by blocking cell cycle progression and cytokine production (By similarity). [UniProt]
Calculated Mw	31 kDa
Cellular Localization	Isoform 3: Secreted. Isoform 2: Endomembrane system; Single-pass type I membrane protein. Isoform 1: Cell membrane; Single-pass type I membrane protein. [UniProt]

Images



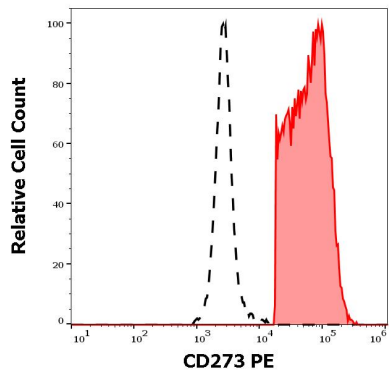
ARG42339 anti-CD273 / PD-L2 antibody [24F.10C12] (PE) FACS image

Flow Cytometry: Human GM-CSF and IL-4 stimulated peripheral blood mononuclear cells stained with ARG42339 anti-CD273 / PD-L2 antibody [24F.10C12] (PE) at 10 µl / 10⁶ cells in 100 µl of cell suspension.



ARG42339 anti-CD273 / PD-L2 antibody [24F.10C12] (PE) FACS image

Flow Cytometry: Human GM-CSF and IL-4 stimulated peripheral blood mononuclear cells stained with ARG42339 anti-CD273 / PD-L2 antibody [24F.10C12] (PE) at 10 µl / 10⁶ cells in 100 µl of cell suspension and [ARG53761](#) anti-CD11c antibody [BU15] (APC) at 10 µl / 100 µl of peripheral whole blood.



ARG42339 anti-CD273 / PD-L2 antibody [24F.10C12] (PE) FACS image

Flow Cytometry: Separation of Human CD273 positive CD11c positive cells (red-filled) from CD273 negative CD11c negative cells (black-dashed). Human GM-CSF and IL-4 stimulated peripheral blood mononuclear cells stained with ARG42339 anti-CD273 / PD-L2 antibody [24F.10C12] (PE) at 10 µl / 10⁶ cells in 100 µl of cell suspension.