

ARG42361 anti-CD21 antibody [LT21] (PerCP)

Package: 50 tests
Store at: 4°C

Summary

Product Description	PerCP-conjugated Mouse Monoclonal antibody [LT21] recognizes CD21
Tested Reactivity	Hu, Cow, Dog, Pig
Tested Application	FACS
Specificity	The antibody LT21 reacts with an extracellular epitope of CD21 (CR2), a 145 kDa transmembrane glycoprotein (complement C3d receptor - C3dR) expressed on B lymphocytes, follicular dendritic cells, some epithelial cells and a subsets of T lymphocytes. It is not expressed on immature B cells.
Host	Mouse
Clonality	Monoclonal
Clone	LT21
Isotype	IgG1
Target Name	CD21
Species	Human
Immunogen	IM9 Human B-lymphoblastoid cell line.
Conjugation	PerCP
Alternate Names	Cr2; Complement C3d receptor; C3DR; CD21; CD antigen CD21; Complement receptor type 2; SLEB9; CR; CVID7; Epstein-Barr virus receptor; EBV receptor

Application Instructions

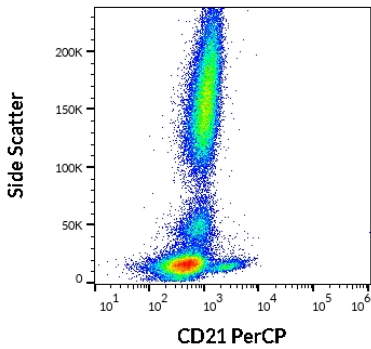
Application table	Application	Dilution
	FACS	10 µl / 100 µl of whole blood or 10 ⁶ cells
Application Note	* The dilutions indicate recommended starting dilutions and the optimal dilutions or concentrations should be determined by the scientist.	

Properties

Form	Liquid
Purification	Purified
Buffer	PBS and 15 mM Sodium azide.
Preservative	15 mM Sodium azide
Storage instruction	Aliquot and store in the dark at 2-8°C. Keep protected from prolonged exposure to light. Avoid repeated freeze/thaw cycles. Suggest spin the vial prior to opening. The antibody solution should be gently mixed before use.
Note	For laboratory research only, not for drug, diagnostic or other use.

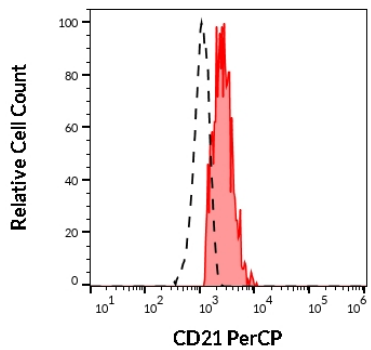
Gene Symbol	CR2
Gene Full Name	complement component (3d/Epstein Barr virus) receptor 2
Background	This gene encodes a membrane protein, which functions as a receptor for Epstein-Barr virus (EBV) binding on B and T lymphocytes. Genetic variations in this gene are associated with susceptibility to systemic lupus erythematosus type 9 (SLEB9). Alternatively spliced transcript variants encoding different isoforms have been found for this gene. [provided by RefSeq, Sep 2009]
Function	Receptor for complement C3, for the Epstein-Barr virus on human B-cells and T-cells and for HNRNPU (PubMed:7753047). Participates in B lymphocytes activation (PubMed:7753047). (Microbial infection) Acts as a receptor for Epstein-Barr virus. [UniProt]
Calculated Mw	113 kDa
Cellular Localization	Membrane; Single-pass type I membrane protein. [UniProt]

Images



ARG42361 anti-CD21 antibody [LT21] (PerCP) FACS image

Flow Cytometry: Human peripheral whole blood stained with ARG42361 anti-CD21 antibody [LT21] (PerCP) at 10 µl / 100 µl of peripheral whole blood.



ARG42361 anti-CD21 antibody [LT21] (PerCP) FACS image

Flow Cytometry: Separation of Human CD21 lymphocytes (red-filled) from neutrophil granulocytes (black-dashed). Human peripheral whole blood stained with ARG42361 anti-CD21 antibody [LT21] (PerCP) at 10 µl / 100 µl of peripheral whole blood.