

ARG42381 anti-OPAL1 antibody [OPAL1-01] (PE)

Package: 50 µg
Store at: 4°C

Summary

Product Description	PE-conjugated Mouse Monoclonal antibody [OPAL1-01] recognizes OPAL1
Tested Reactivity	Hu
Tested Application	FACS
Specificity	The mouse monoclonal antibody OPAL1-01 recognizes an intracellular epitope of OPAL1 (outcome predictor in acute leukemia 1), a transmembrane adaptor protein expressed mainly by megacaryocytes and platelets.
Host	Mouse
Clonality	Monoclonal
Clone	OPAL1-01
Isotype	IgG2a
Target Name	OPAL1
Species	Human
Immunogen	Recombinant fragment corresponding to aa. 152-342 of Human OPAL1.
Conjugation	PE
Alternate Names	OPA1L; Outcome predictor in acute leukemia 1; WW domain binding protein 1-like; OPAL1; C10orf26

Application Instructions

Application table	Application	Dilution
	FACS	1 - 5 µg/ml
Application Note	* The dilutions indicate recommended starting dilutions and the optimal dilutions or concentrations should be determined by the scientist.	

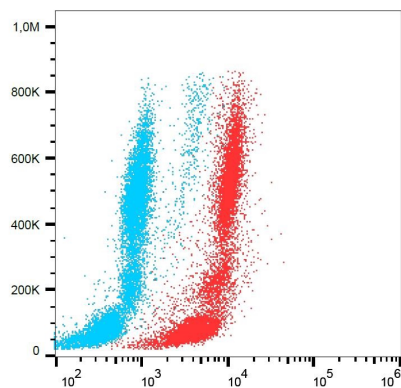
Properties

Form	Liquid
Purification	Purified
Buffer	PBS and 15 mM Sodium azide.
Preservative	15 mM Sodium azide
Concentration	0.1 mg/ml
Storage instruction	Aliquot and store in the dark at 2-8°C. Keep protected from prolonged exposure to light. Avoid repeated freeze/thaw cycles. Suggest spin the vial prior to opening. The antibody solution should be gently mixed before use.
Note	For laboratory research only, not for drug, diagnostic or other use.

Bioinformation

Gene Symbol	WBP1L
Gene Full Name	WW domain binding protein 1-like
Calculated Mw	38 kDa
Cellular Localization	Membrane; Single-pass membrane protein. [UniProt]

Images



ARG42381 anti-OPAL1 antibody [OPAL1-01] (PE) FACS image

Flow Cytometry: Human peripheral blood stained with ARG42381 anti-OPAL1 antibody [OPAL1-01] (PE) (red). Blank sample (blue).