

ARG42434 anti-CD172b / SIRPB1 antibody [B4B6]

Package: 100 µg
Store at: -20°C

Summary

Product Description	Mouse Monoclonal antibody [B4B6] recognizes CD172b / SIRPB1
Tested Reactivity	Hu
Tested Application	FACS
Specificity	The mouse monoclonal antibody B4B6 recognizes an extracellular epitope of CD172b, an approximately 50 kDa transmembrane glycoprotein expressed on myeloid cells.
Host	Mouse
Clonality	Monoclonal
Clone	B4B6
Isotype	IgG1
Target Name	CD172b / SIRPB1
Species	Human
Immunogen	NIH/3T3 cells transfected with Human CD172b.
Conjugation	Un-conjugated
Alternate Names	CD antigen CD172b; CD172b; CD172 antigen-like family member B; SIRP-BETA-1; SIRP-beta-1; Signal-regulatory protein beta-1

Application Instructions

Application table	Application	Dilution
	FACS	1 - 4 µg/ml
Application Note	* The dilutions indicate recommended starting dilutions and the optimal dilutions or concentrations should be determined by the scientist.	

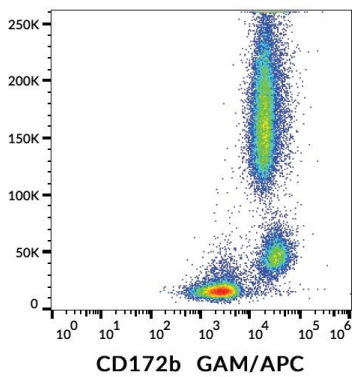
Properties

Form	Liquid
Purification	Purification with Protein A.
Buffer	PBS and 15 mM Sodium azide.
Preservative	15 mM Sodium azide
Concentration	1 mg/ml
Storage instruction	For continuous use, store undiluted antibody at 2-8°C for up to a week. For long-term storage, aliquot and store at -20°C or below. Storage in frost free freezers is not recommended. Avoid repeated freeze/thaw cycles. Suggest spin the vial prior to opening. The antibody solution should be gently mixed before use.
Note	For laboratory research only, not for drug, diagnostic or other use.

Bioinformation

Gene Symbol	SIRPB1
Gene Full Name	signal-regulatory protein beta 1
Background	The protein encoded by this gene is a member of the signal-regulatory-protein (SIRP) family, and also belongs to the immunoglobulin superfamily. SIRP family members are receptor-type transmembrane glycoproteins known to be involved in the negative regulation of receptor tyrosine kinase-coupled signaling processes. This protein was found to interact with TYROBP/DAP12, a protein bearing immunoreceptor tyrosine-based activation motifs. This protein was also reported to participate in the recruitment of tyrosine kinase SYK. Multiple transcript variants encoding different isoforms have been found for this gene. [provided by RefSeq, Feb 2009]
Function	Immunoglobulin-like cell surface receptor involved in the negative regulation of receptor tyrosine kinase-coupled signaling processes. Participates also in the recruitment of tyrosine kinase SYK. Triggers activation of myeloid cells when associated with TYROBP (PubMed:10604985). [UniProt]
Calculated Mw	43 kDa
PTM	N-glycosylated. [UniProt]
Cellular Localization	Membrane; Single-pass type I membrane protein. [UniProt]

Images



ARG42434 anti-CD172b / SIRPB1 antibody [B4B6] FACS image

Flow Cytometry: Human peripheral blood cells stained with ARG42434 anti-CD172b / SIRPB1 antibody [B4B6], followed by APC-conjugated Goat anti-Mouse antibody.