

ARG42516 anti-RAB9B antibody

Package: 100 µg
Store at: -20°C

Summary

| | |
|---------------------|---|
| Product Description | Goat Polyclonal antibody recognizes RAB9B |
| Tested Reactivity | Hu, Ms, Rat, Dog, Mk |
| Tested Application | WB |
| Host | Goat |
| Clonality | Polyclonal |
| Isotype | IgG |
| Target Name | RAB9B |
| Species | Human |
| Immunogen | Purified recombinant peptide within aa. 115 to the C-terminus of Human RAB9B. |
| Conjugation | Un-conjugated |
| Alternate Names | Rab-9-like protein; Rab-9L; Ras-related protein Rab-9B; RAB9L |

Application Instructions

| | | |
|-------------------|--|----------------|
| Application table | Application | Dilution |
| | WB | 1:250 - 1:2000 |
| Application Note | * The dilutions indicate recommended starting dilutions and the optimal dilutions or concentrations should be determined by the scientist. | |
| Positive Control | Brain | |
| Observed Size | ~ 24 kDa | |

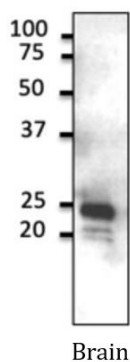
Properties

| | |
|---------------------|---|
| Form | Liquid |
| Purification | Affinity purification with immunogen. |
| Buffer | PBS, 0.05% Sodium azide and 20% Glycerol. |
| Preservative | 0.05% Sodium azide |
| Stabilizer | 20% Glycerol |
| Concentration | 3 mg/ml |
| Storage instruction | For continuous use, store undiluted antibody at 2-8°C for up to a week. For long-term storage, aliquot and store at -20°C. Storage in frost free freezers is not recommended. Avoid repeated freeze/thaw cycles. Suggest spin the vial prior to opening. The antibody solution should be gently mixed before use. |
| Note | For laboratory research only, not for drug, diagnostic or other use. |

Bioinformation

| | |
|-----------------------|---|
| Gene Symbol | RAB9B |
| Gene Full Name | RAB9B, member RAS oncogene family |
| Background | This gene encodes a member of a subfamily of RAS small guanosine triphosphate (GTP)-binding proteins that regulate membrane trafficking. The encoded protein may be involved in endosome-to-Golgi transport. [provided by RefSeq, Jan 2010] |
| Function | Involved in the transport of proteins between the endosomes and the trans Golgi network. [UniProt] |
| Calculated Mw | 23 kDa |
| Cellular Localization | Cell membrane; Lipid-anchor; Cytoplasmic side. Cytoplasmic vesicle, phagosome. Cytoplasmic vesicle, phagosome membrane; Lipid-anchor; Cytoplasmic side. Note=Recruited to phagosomes containing S.aureus or M.tuberculosis. [UniProt] |

Images



ARG42516 anti-RAB9B antibody WB image

Western blot: 50 µg of brain lysate stained with ARG42516 anti-RAB9B antibody at 1:500 dilution.