

## ARG42523 anti-RAB28 antibody

Package: 100 µg  
Store at: -20°C

### Summary

Product Description	Goat Polyclonal antibody recognizes RAB28
Tested Reactivity	Hu, Ms, Rat, Dog, Mk
Tested Application	ICC/IF, WB
Host	Goat
Clonality	Polyclonal
Isotype	IgG
Target Name	RAB28
Species	Mouse
Immunogen	Purified recombinant peptide within aa. 120 to the C-terminus of Mouse RAB28.
Conjugation	Un-conjugated
Alternate Names	CORD18; Ras-related protein Rab-28

### Application Instructions

Application table	Application	Dilution
	ICC/IF	1:25 - 1:250
	WB	1:250 - 1:2000
Application Note	* The dilutions indicate recommended starting dilutions and the optimal dilutions or concentrations should be determined by the scientist.	

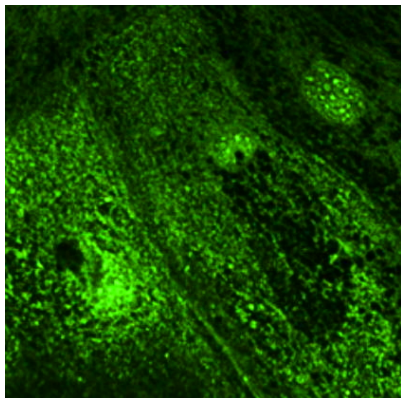
### Properties

Form	Liquid
Purification	Affinity purification with immunogen.
Buffer	PBS, 0.05% Sodium azide and 20% Glycerol.
Preservative	0.05% Sodium azide
Stabilizer	20% Glycerol
Concentration	3 mg/ml
Storage instruction	For continuous use, store undiluted antibody at 2-8°C for up to a week. For long-term storage, aliquot and store at -20°C. Storage in frost free freezers is not recommended. Avoid repeated freeze/thaw cycles. Suggest spin the vial prior to opening. The antibody solution should be gently mixed before use.
Note	For laboratory research only, not for drug, diagnostic or other use.

Bioinformation

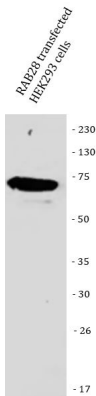
Gene Symbol	RAB28
Gene Full Name	RAB28, member RAS oncogene family
Background	This gene encodes a member of the Rab subfamily of Ras-related small GTPases. The encoded protein may be involved in regulating intracellular trafficking. Alternative splicing results in multiple transcript variants. Pseudogenes of this gene are found on chromosomes 9 and X. [provided by RefSeq, Apr 2009]
Calculated Mw	25 kDa
Cellular Localization	Cell membrane; Lipid-anchor; Cytoplasmic side. Cytoplasm, cytoskeleton, cilium basal body. Note=Expressed in the basal body and ciliary rootlet of the photoreceptors. [UniProt]

Images



ARG42523 anti-RAB28 antibody ICC/IF image

Immunofluorescence: Primary RPE cells stained with ARG42523 anti-RAB28 antibody at 1:100 dilution.



ARG42523 anti-RAB28 antibody WB image

Western blot: RAB28 transfected HEK293 cells stained with ARG42523 anti-RAB28 antibody at 1:1000 dilution.