

## ARG42536 anti-CHML / REP2 antibody

Package: 100 µg  
Store at: -20°C

### Summary

Product Description	Goat Polyclonal antibody recognizes CHML / REP2
Tested Reactivity	Hu, Ms, Rat, Dog, Mk
Tested Application	WB
Host	Goat
Clonality	Polyclonal
Isotype	IgG
Target Name	CHML / REP2
Species	Human
Immunogen	Purified recombinant peptide within aa. 617 to the C-terminus of Human CHML / REP2.
Conjugation	Un-conjugated
Alternate Names	Rab proteins geranylgeranyltransferase component A 2; Choroideremia-like protein; REP2; Rab escort protein 2; REP-2

### Application Instructions

Application table	<table> <tr> <th>Application</th><th>Dilution</th></tr> <tr> <td>WB</td><td>1:500 - 1:5000</td></tr> </table>	Application	Dilution	WB	1:500 - 1:5000
Application	Dilution				
WB	1:500 - 1:5000				
Application Note	* The dilutions indicate recommended starting dilutions and the optimal dilutions or concentrations should be determined by the scientist.				
Positive Control	LS174T and HeLa				
Observed Size	~ 80 kDa				

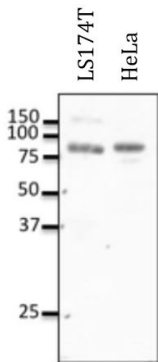
### Properties

Form	Liquid
Purification	Affinity purification with immunogen.
Buffer	PBS, 0.05% Sodium azide and 20% Glycerol.
Preservative	0.05% Sodium azide
Stabilizer	20% Glycerol
Concentration	3 mg/ml
Storage instruction	For continuous use, store undiluted antibody at 2-8°C for up to a week. For long-term storage, aliquot and store at -20°C. Storage in frost free freezers is not recommended. Avoid repeated freeze/thaw cycles. Suggest spin the vial prior to opening. The antibody solution should be gently mixed before use.
Note	For laboratory research only, not for drug, diagnostic or other use.

Bioinformation

Gene Symbol	CHML
Gene Full Name	choroideremia-like (Rab escort protein 2)
Background	The product of the CHML gene supports geranylgeranylation of most Rab proteins and may substitute for REP-1 in tissues other than retina. CHML is localized close to the gene for Usher syndrome type II. [provided by RefSeq, Jul 2008]
Function	Substrate-binding subunit (component A) of the Rab geranylgeranyltransferase (GGTase) complex. Binds unprenylated Rab proteins and presents the substrate peptide to the catalytic component B. The component A is thought to be regenerated by transferring its prenylated Rab back to the donor membrane. Less effective than CHM in supporting prenylation of Rab3 family. [UniProt]
Calculated Mw	74 kDa
Cellular Localization	Cytoplasm, cytosol. [UniProt]

Images



ARG42536 anti-CHML / REP2 antibody WB image

Western blot: 50 µg of LS174T and HeLa cell lysates stained with ARG42536 anti-CHML / REP2 antibody at 1:1000 dilution.