

## ARG42537 anti-NPY1R antibody

Package: 100 µg  
Store at: -20°C

### Summary

Product Description	Goat Polyclonal antibody recognizes NPY1R
Tested Reactivity	Hu, Ms, Rat, Dog, Mk
Tested Application	WB
Host	Goat
Clonality	Polyclonal
Isotype	IgG
Target Name	NPY1R
Species	Human
Immunogen	Recombinant peptide within aa. 300 to the C-terminus of Human NPY1R.
Conjugation	Un-conjugated
Alternate Names	NPYR; Neuropeptide Y receptor type 1; NPY1-R

### Application Instructions

Application table	<table> <tr> <th>Application</th><th>Dilution</th></tr> <tr> <td>WB</td><td>1:500 - 1:5000</td></tr> </table>	Application	Dilution	WB	1:500 - 1:5000
Application	Dilution				
WB	1:500 - 1:5000				
Application Note	* The dilutions indicate recommended starting dilutions and the optimal dilutions or concentrations should be determined by the scientist.				
Positive Control	Brain				
Observed Size	~ 46 kDa				

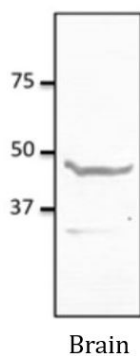
### Properties

Form	Liquid
Purification	Affinity purification with immunogen.
Buffer	PBS, 0.05% Sodium azide and 20% Glycerol.
Preservative	0.05% Sodium azide
Stabilizer	20% Glycerol
Concentration	3 mg/ml
Storage instruction	For continuous use, store undiluted antibody at 2-8°C for up to a week. For long-term storage, aliquot and store at -20°C. Storage in frost free freezers is not recommended. Avoid repeated freeze/thaw cycles. Suggest spin the vial prior to opening. The antibody solution should be gently mixed before use.
Note	For laboratory research only, not for drug, diagnostic or other use.

## Bioinformation

Gene Symbol	NPY1R
Gene Full Name	neuropeptide Y receptor Y1
Background	This gene belongs to the G-protein-coupled receptor superfamily. The encoded transmembrane protein mediates the function of neuropeptide Y (NPY), a neurotransmitter, and peptide YY (PYY), a gastrointestinal hormone. The encoded receptor undergoes fast agonist-induced internalization through clathrin-coated pits and is subsequently recycled back to the cell membrane. Activation of Y1 receptors may result in mobilization of intracellular calcium and inhibition of adenylate cyclase activity. [provided by RefSeq, Aug 2013]
Function	Receptor for neuropeptide Y and peptide YY. The rank order of affinity of this receptor for pancreatic polypeptides is NPY > [Pro-34] PYY, PYY and [Leu-31, Pro-34] NPY > NPY (2-36) > [Ile-31, Gln-34] PP and PYY (3-36) > PP > NPY free acid. [UniProt]
Calculated Mw	44 kDa
Cellular Localization	Cell membrane; Multi-pass membrane protein. [UniProt]

## Images



ARG42537 anti-NPY1R antibody WB image

Western blot: 50 µg of brain lysate stained with ARG42537 anti-NPY1R antibody at 1:1000 dilution.