

ARG42540 anti-RAB3A antibody

Package: 100 µg
Store at: -20°C

Summary

| | |
|---------------------|--|
| Product Description | Goat Polyclonal antibody recognizes RAB3A |
| Tested Reactivity | Hu, Ms, Rat, Dog, Mk |
| Tested Application | IHC-Fr, IHC-P, WB |
| Host | Goat |
| Clonality | Polyclonal |
| Isotype | IgG |
| Target Name | RAB3A |
| Species | Human |
| Immunogen | Recombinant peptide within aa. 181 to the C-terminus of Human RAB3A. |
| Conjugation | Un-conjugated |
| Alternate Names | Ras-related protein Rab-3A |

Application Instructions

| Application table | Application | Dilution |
|-------------------|--|-----------------|
| | IHC-Fr | 1:200 - 1:1000 |
| | IHC-P | 1:250 - 1:1000 |
| | WB | 1:1000 - 1:2000 |
| Application Note | * The dilutions indicate recommended starting dilutions and the optimal dilutions or concentrations should be determined by the scientist. | |
| Positive Control | Brain | |
| Observed Size | ~ 28 kDa | |

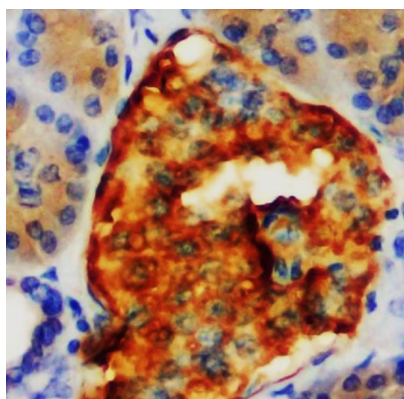
Properties

| | |
|---------------------|---|
| Form | Liquid |
| Purification | Affinity purification with immunogen. |
| Buffer | PBS, 0.05% Sodium azide and 20% Glycerol. |
| Preservative | 0.05% Sodium azide |
| Stabilizer | 20% Glycerol |
| Concentration | 2 mg/ml |
| Storage instruction | For continuous use, store undiluted antibody at 2-8°C for up to a week. For long-term storage, aliquot and store at -20°C. Storage in frost free freezers is not recommended. Avoid repeated freeze/thaw cycles. Suggest spin the vial prior to opening. The antibody solution should be gently mixed before use. |

Bioinformation

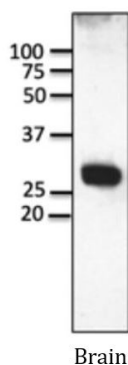
| | |
|-----------------------|--|
| Gene Symbol | RAB3A |
| Gene Full Name | RAB3A, member RAS oncogene family |
| Function | Small GTP-binding protein that plays a central role in regulated exocytosis and secretion. Controls the recruitment, tethering and docking of secretory vesicles to the plasma membrane (By similarity). Upon stimulation, switches to its active GTP-bound form, cycles to vesicles and recruits effectors such as RIMS1, RIMS2, Rabphilin-3A/RPH3A, RPH3AL or SYTL4 to help the docking of vesicles onto the plasma membrane (By similarity). Upon GTP hydrolysis by GTPase-activating protein, dissociates from the vesicle membrane allowing the exocytosis to proceed (By similarity). Stimulates insulin secretion through interaction with RIMS2 or RPH3AL effectors in pancreatic beta cells (By similarity). Regulates calcium-dependent lysosome exocytosis and plasma membrane repair (PMR) via the interaction with 2 effectors, SYTL4 and myosin-9/MYH9 (PubMed:27325790). Acts as a positive regulator of acrosome content secretion in sperm cells by interacting with RIMS1 (PubMed:22248876, PubMed:30599141). Plays also a role in the regulation of dopamine release by interacting with synaptotagmin I/SYT (By similarity). [UniProt] |
| Calculated Mw | 25 kDa |
| Cellular Localization | Cell membrane; Lipid-anchor; Cytoplasmic side. [UniProt] |

Images



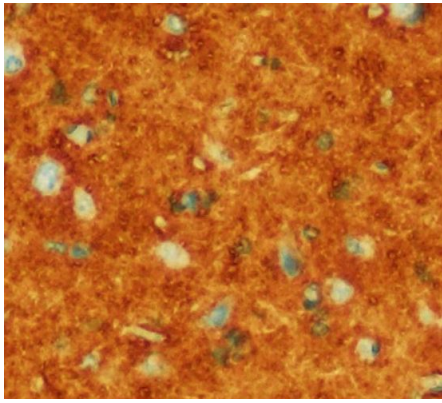
ARG42540 anti-RAB3A antibody IHC-P image

Immunohistochemistry: Human pancreas stained with ARG42540 anti-RAB3A antibody at 1:750 dilution.



ARG42540 anti-RAB3A antibody WB image

Western blot: 50 µg of brain lysate stained with ARG42540 anti-RAB3A antibody at 1:1000 dilution.



ARG42540 anti-RAB3A antibody IHC-P image

Immunohistochemistry: Mouse brain stained with ARG42540 anti-RAB3A antibody at 1:750 dilution.