

ARG42557 anti-gamma Sarcoglycan antibody

Package: 100 µl
Store at: -20°C

Summary

Product Description	Rabbit Polyclonal antibody recognizes gamma Sarcoglycan
Tested Reactivity	Hu, Rat
Tested Application	IHC-P, IP, WB
Host	Rabbit
Clonality	Polyclonal
Isotype	IgG
Target Name	gamma Sarcoglycan
Species	Human
Immunogen	Synthetic peptide derived from Human gamma Sarcoglycan.
Conjugation	Un-conjugated
Alternate Names	Breast cancer-specific gene 1 protein; Persyn; SR; Synoretin; BCSG1; Gamma-synuclein

Application Instructions

Application table	Application	Dilution
	IHC-P	1:50 - 1:200
	IP	1:20
	WB	1:500 - 1:2000
Application Note	* The dilutions indicate recommended starting dilutions and the optimal dilutions or concentrations should be determined by the scientist.	
Positive Control	Human fetal brain	
Observed Size	~ 16 kDa	

Properties

Form	Liquid
Purification	Affinity purified.
Buffer	PBS (pH 7.4), 150 mM NaCl, 0.02% Sodium azide and 50% Glycerol.
Preservative	0.02% Sodium azide
Stabilizer	50% Glycerol
Storage instruction	For continuous use, store undiluted antibody at 2-8°C for up to a week. For long-term storage, aliquot and store at -20°C. Storage in frost free freezers is not recommended. Avoid repeated freeze/thaw cycles. Suggest spin the vial prior to opening. The antibody solution should be gently mixed before use.

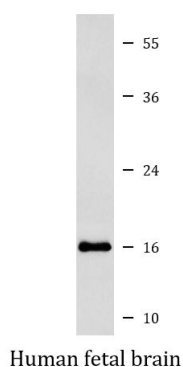
Note

For laboratory research only, not for drug, diagnostic or other use.

Bioinformation

Gene Symbol	SNCG
Gene Full Name	synuclein, gamma (breast cancer-specific protein 1)
Background	This gene encodes a member of the synuclein family of proteins which are believed to be involved in the pathogenesis of neurodegenerative diseases. Mutations in this gene have also been associated with breast tumor development. [provided by RefSeq, Jan 2010]
Function	Plays a role in neurofilament network integrity. May be involved in modulating axonal architecture during development and in the adult. In vitro, increases the susceptibility of neurofilament-H to calcium-dependent proteases (By similarity). May also function in modulating the keratin network in skin. Activates the MAPK and Elk-1 signal transduction pathway (By similarity). [UniProt]
Calculated Mw	13 kDa
PTM	Phosphorylated. Phosphorylation by GRK5 appears to occur on residues distinct from the residue phosphorylated by other kinases. [UniProt]
Cellular Localization	Cytoplasm, perinuclear region. Cytoplasm, cytoskeleton, microtubule organizing center, centrosome. Cytoplasm, cytoskeleton, spindle. Note=Associated with centrosomes in several interphase cells. In mitotic cells, localized to the poles of the spindle. [UniProt]

Images



ARG42557 anti-gamma Sarcoglycan antibody WB image

Western blot: Human fetal brain lysate stained with ARG42557 anti-gamma Sarcoglycan antibody.