

ARG42597 anti-CutA antibody

Package: 50 µg
Store at: -20°C

Summary

Product Description	Goat Polyclonal antibody recognizes CutA
Tested Reactivity	Hu
Tested Application	IHC-P, WB
Specificity	This antibody is expected to recognize all reported isoforms (NP_001014433.1; NP_057005.1; NP_001014840.1). Reported variants represent identical protein: NP_001014837.1, NP_001014838.1, NP_057005.1.
Host	Goat
Clonality	Polyclonal
Isotype	IgG
Target Name	CutA
Species	Human
Immunogen	Synthetic peptide around the C-terminus of Human CutA. (C-QVTESVSDSIT) (NP_001014433.1; NP_057005.1; NP_001014840.1)
Conjugation	Un-conjugated
Alternate Names	Acetylcholinesterase-associated protein; Brain acetylcholinesterase putative membrane anchor; Protein CutA; ACHAP; C6orf82

Application Instructions

Application table	Application	Dilution
	IHC-P	5 µg/ml
	WB	1 - 3 µg/ml
Application Note	WB: Recommend incubate at RT for 1h. IHC-P: Antigen Retrieval: Steam tissue section in Citrate buffer (pH 6.0). * The dilutions indicate recommended starting dilutions and the optimal dilutions or concentrations should be determined by the scientist.	
Positive Control	Kelly	
Observed Size	~ 16 kDa	

Properties

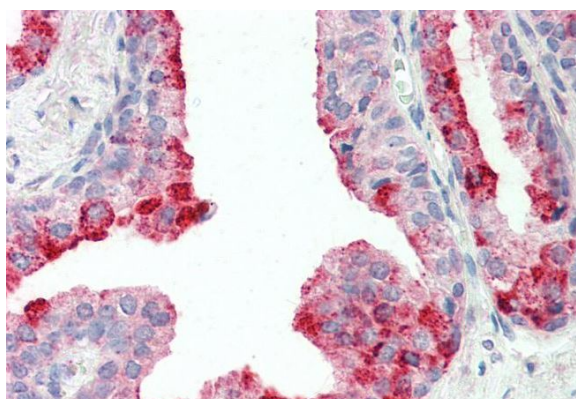
Form	Liquid
Purification	Affinity purified
Buffer	Tris saline (pH 7.3), 0.02% Sodium azide and 0.5% BSA.
Preservative	0.02% Sodium azide

Stabilizer	0.5% BSA
Concentration	0.5 mg/ml
Storage instruction	For continuous use, store undiluted antibody at 2-8°C for up to a week. For long-term storage, aliquot and store at -20°C or below. Storage in frost free freezers is not recommended. Avoid repeated freeze/thaw cycles. Suggest spin the vial prior to opening. The antibody solution should be gently mixed before use.
Note	For laboratory research only, not for drug, diagnostic or other use.

Bioinformation

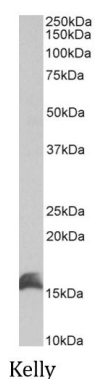
Gene Symbol	CUTA
Gene Full Name	cutA divalent cation tolerance homolog (E. coli)
Function	May form part of a complex of membrane proteins attached to acetylcholinesterase (AChE). [UniProt]
Calculated Mw	Isoform A: 21 kDa Isoform B: 19 kDa Isoform C: 17 kDa
PTM	O-glycosylated. [UniProt]

Images



ARG42597 anti-CutA antibody IHC-P image

Immunohistochemistry: Paraffin-embedded Human prostate tissue. Antigen Retrieval: Steam tissue section in Citrate buffer (pH 6.0). The tissue section was stained with ARG42597 anti-CutA antibody at 5 µg/ml dilution followed by AP-staining.



ARG42597 anti-CutA antibody WB image

Western blot: 35 µg of Kelly cell lysate (in RIPA buffer) stained with ARG42597 anti-CutA antibody at 1 µg/ml dilution and incubated at RT for 1 hour.