

ARG42623 anti-Aminopeptidase A antibody

Package: 100 µl
Store at: -20°C

Summary

Product Description	Rabbit Polyclonal antibody recognizes Aminopeptidase A
Tested Reactivity	Hu
Tested Application	IHC-P, WB
Host	Rabbit
Clonality	Polyclonal
Isotype	IgG
Target Name	Aminopeptidase A
Species	Human
Immunogen	Synthetic peptide derived from Human Aminopeptidase A.
Conjugation	Un-conjugated
Alternate Names	Aminopeptidase A; Glutamyl aminopeptidase; CD antigen CD249; Differentiation antigen gp160; gp160; EC 3.4.11.7; AP-A; EAP; APA; CD249

Application Instructions

Application table	Application	Dilution
	IHC-P	1:50 - 1:200
	WB	1:1000 - 1:5000
Application Note	* The dilutions indicate recommended starting dilutions and the optimal dilutions or concentrations should be determined by the scientist.	
Positive Control	Human fetal lung	
Observed Size	~ 180 kDa	

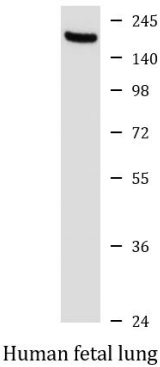
Properties

Form	Liquid
Purification	Affinity purified.
Buffer	PBS (pH 7.4), 150 mM NaCl, 0.02% Sodium azide and 50% Glycerol.
Preservative	0.02% Sodium azide
Stabilizer	50% Glycerol
Storage instruction	For continuous use, store undiluted antibody at 2-8°C for up to a week. For long-term storage, aliquot and store at -20°C. Storage in frost free freezers is not recommended. Avoid repeated freeze/thaw cycles. Suggest spin the vial prior to opening. The antibody solution should be gently mixed before use.
Note	For laboratory research only, not for drug, diagnostic or other use.

Bioinformation

Gene Symbol	ENPEP
Gene Full Name	glutamyl aminopeptidase (aminopeptidase A)
Function	Regulates central hypertension through its calcium-modulated preference to cleave N-terminal acidic residues from peptides such as angiotensin II. [UniProt]
Calculated Mw	109 kDa
Cellular Localization	Membrane; Single-pass type II membrane protein. [UniProt]

Images



ARG42623 anti-Aminopeptidase A antibody WB image

Western blot: Human fetal lung lysate stained with ARG42623 anti-Aminopeptidase A antibody.