

ARG42651 anti-Arylsulfatase A antibody [4C10]

Package: 50 µg
Store at: -20°C

Summary

| | |
|---------------------|--|
| Product Description | Mouse Monoclonal antibody [4C10] recognizes Arylsulfatase A |
| Tested Reactivity | Hu, Ms, Rat |
| Tested Application | FACS, IHC-P, WB |
| Host | Mouse |
| Clonality | Monoclonal |
| Clone | 4C10 |
| Isotype | IgG2a |
| Target Name | Arylsulfatase A |
| Species | Human |
| Immunogen | Synthetic peptide corresponding to aa. 454-482 of Human Arylsulfatase A. (QALKQLQLLKAQLDAAVTFGPSQVARGED) |
| Conjugation | Un-conjugated |
| Alternate Names | ASA; Cerebroside-sulfatase; EC 3.1.6.8; Arylsulfatase A; MLD |

Application Instructions

| Application table | Application | Dilution |
|-------------------|---|----------------|
| | FACS | 1:150 - 1:500 |
| | IHC-P | 1:200 - 1:1000 |
| | WB | 1:500 - 1:2000 |
| Application Note | IHC-P: Antigen Retrieval: Heat mediation was performed in Citrate buffer (pH 6.0) for 20 min. * The dilutions indicate recommended starting dilutions and the optimal dilutions or concentrations should be determined by the scientist. | |
| Observed Size | ~ 60 kDa | |

Properties

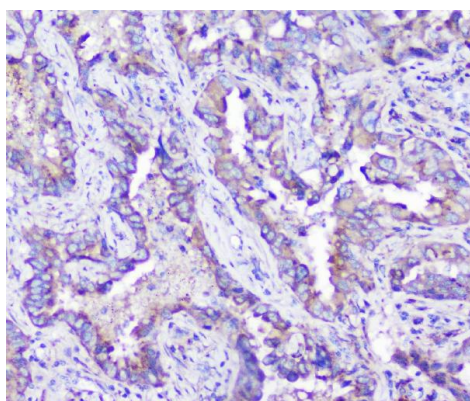
| | |
|---------------|---|
| Form | Liquid |
| Purification | Affinity purification with immunogen. |
| Buffer | 0.2% Na ₂ HPO ₄ , 0.9% NaCl, 0.05% Sodium azide and 4% Trehalose. |
| Preservative | 0.05% Sodium azide |
| Stabilizer | 4% Trehalose |
| Concentration | 0.5 mg/ml |

| | |
|---------------------|--|
| Storage instruction | For continuous use, store undiluted antibody at 2-8°C for up to a week. For long-term storage, aliquot and store at -20°C or below. Storage in frost free freezers is not recommended. Avoid repeated freeze/thaw cycles. Suggest spin the vial prior to opening. The antibody solution should be gently mixed before use. |
| Note | For laboratory research only, not for drug, diagnostic or other use. |

Bioinformation

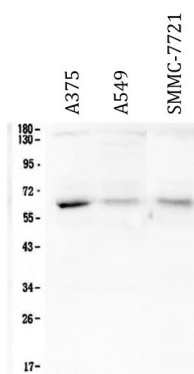
| | |
|-----------------------|--|
| Gene Symbol | ARSA |
| Gene Full Name | arylsulfatase A |
| Background | The protein encoded by this gene hydrolyzes cerebroside sulfate to cerebroside and sulfate. Defects in this gene lead to metachromatic leucodystrophy (MLD), a progressive demyelination disease which results in a variety of neurological symptoms and ultimately death. Alternatively spliced transcript variants have been described for this gene. [provided by RefSeq, Dec 2010] |
| Function | Hydrolyzes cerebroside sulfate. [UniProt] |
| Calculated Mw | 54 kDa |
| PTM | The conversion to 3-oxoalanine (also known as C-formylglycine, FGly), of a serine or cysteine residue in prokaryotes and of a cysteine residue in eukaryotes, is critical for catalytic activity. This post-translational modification is severely defective in multiple sulfatase deficiency (MSD). [UniProt] |
| Cellular Localization | Lysosome. [UniProt] |

Images



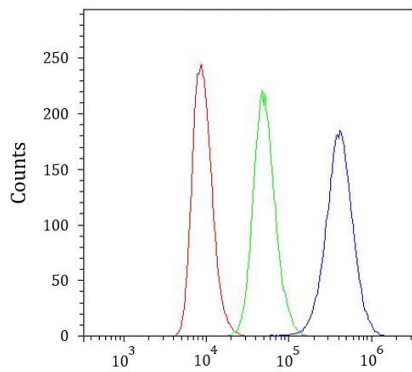
ARG42651 anti-Arylsulfatase A antibody [4C10] IHC-P image

Immunohistochemistry: Paraffin-embedded Human lung cancer tissue. Antigen Retrieval: Heat mediation was performed in Citrate buffer (pH 6.0) for 20 min. The tissue section was blocked with 10% goat serum. The tissue section was then stained with ARG42651 anti-Arylsulfatase A antibody [4C10] at 1 µg/ml dilution, overnight at 4°C.



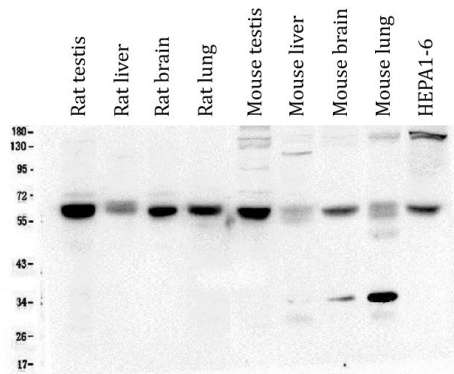
ARG42651 anti-Arylsulfatase A antibody [4C10] WB image

Western blot: 50 µg of samples under reducing conditions. A375, A549 and SMMC-7721 whole cell lysates stained with ARG42651 anti-Arylsulfatase A antibody [4C10] at 0.5 µg/ml dilution, overnight at 4°C.



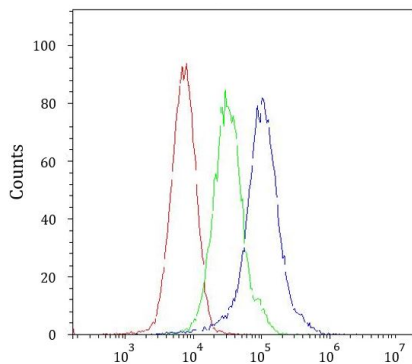
ARG42651 anti-Arylsulfatase A antibody [4C10] FACS image

Flow Cytometry: Raji cells were blocked with 10% normal goat serum and then stained with ARG42651 anti-Arylsulfatase A antibody [4C10] (blue) at $1 \mu\text{g}/10^6$ cells for 30 min at 20°C , followed by incubation with DyLight®488 labelled secondary antibody. Isotype control antibody (green) was Mouse IgG ($1 \mu\text{g}/10^6$ cells) used under the same conditions. Unlabelled sample (red) was also used as a control.



ARG42651 anti-Arylsulfatase A antibody [4C10] WB image

Western blot: $50 \mu\text{g}$ of samples under reducing conditions. Rat testis, Rat liver, Rat brain, Rat lung, Mouse testis, Mouse liver, Mouse brain, Mouse lung and HEPA1-6 whole cell lysates stained with ARG42651 anti-Arylsulfatase A antibody [4C10] at $0.5 \mu\text{g}/\text{ml}$ dilution, overnight at 4°C .



ARG42651 anti-Arylsulfatase A antibody [4C10] FACS image

Flow Cytometry: ANA-1 cells were blocked with 10% normal goat serum and then stained with ARG42651 anti-Arylsulfatase A antibody [4C10] (blue) at $1 \mu\text{g}/10^6$ cells for 30 min at 20°C , followed by incubation with DyLight®488 labelled secondary antibody. Isotype control antibody (green) was Mouse IgG ($1 \mu\text{g}/10^6$ cells) used under the same conditions. Unlabelled sample (red) was also used as a control.