

ARG42666 anti-Ribonuclease Inhibitor antibody

Package: 50 µg
Store at: -20°C

Summary

Product Description	Rabbit Polyclonal antibody recognizes Ribonuclease Inhibitor
Tested Reactivity	Hu, Ms, Rat, Mk
Tested Application	FACS, IHC-P, WB
Host	Rabbit
Clonality	Polyclonal
Isotype	IgG
Target Name	Ribonuclease Inhibitor
Species	Human
Immunogen	Synthetic peptide corresponding to aa. 2-37 of Human Ribonuclease Inhibitor. (SLDIQSLDIQCEELSDARWAELLPLLQQCQVRLDD)
Conjugation	Un-conjugated
Alternate Names	RNH; Ribonuclease/angiogenin inhibitor 1; RAI; Ribonuclease inhibitor; Placental ribonuclease inhibitor; Placental RNase inhibitor

Application Instructions

Application table	Application	Dilution
	FACS	1:150 - 1:500
	IHC-P	1:200 - 1:1000
	WB	1:500 - 1:2000
Application Note	IHC-P: Antigen Retrieval: Heat mediation was performed in Citrate buffer (pH 6.0) for 20 min. * The dilutions indicate recommended starting dilutions and the optimal dilutions or concentrations should be determined by the scientist.	
Observed Size	~ 50 kDa	

Properties

Form	Liquid
Purification	Affinity purification with immunogen.
Buffer	0.2% Na ₂ HPO ₄ , 0.9% NaCl, 0.05% Sodium azide and 5% BSA.
Preservative	0.05% Sodium azide
Stabilizer	5% BSA
Concentration	0.5 mg/ml
Storage instruction	For continuous use, store undiluted antibody at 2-8°C for up to a week. For long-term storage, aliquot and store at -20°C or below. Storage in frost free freezers is not recommended. Avoid repeated

freeze/thaw cycles. Suggest spin the vial prior to opening. The antibody solution should be gently mixed before use.

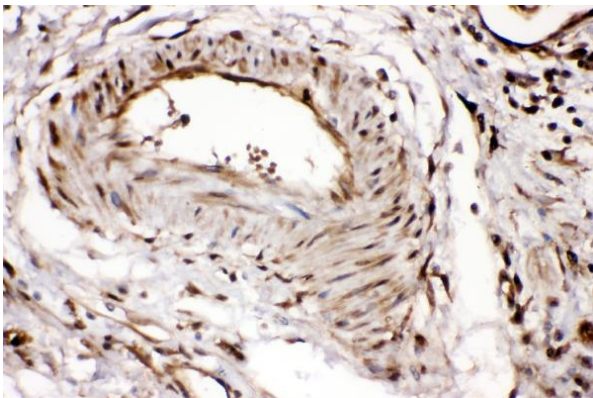
Note

For laboratory research only, not for drug, diagnostic or other use.

Bioinformation

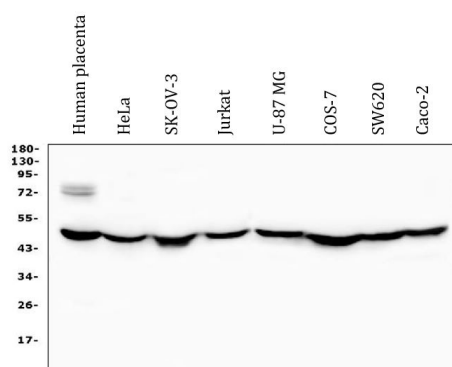
Gene Symbol	RNH1
Gene Full Name	ribonuclease/angiogenin inhibitor 1
Background	Placental ribonuclease inhibitor (PRI) is a member of a family of proteinaceous cytoplasmic RNase inhibitors that occur in many tissues and bind to both intracellular and extracellular RNases (summarized by Lee et al., 1988 [PubMed 3219362]). In addition to control of intracellular RNases, the inhibitor may have a role in the regulation of angiogenin (MIM 105850). Ribonuclease inhibitor, of 50,000 Da, binds to ribonucleases and holds them in a latent form. Since neutral and alkaline ribonucleases probably play a critical role in the turnover of RNA in eukaryotic cells, RNH may be essential for control of mRNA turnover; the interaction of eukaryotic cells with ribonuclease may be reversible in vivo.[supplied by OMIM, Jul 2010]
Function	Ribonuclease inhibitor which inhibits RNASE1, RNASE2 and ANG. May play a role in redox homeostasis. [UniProt]
Calculated Mw	50 kDa
PTM	The N-terminus is blocked. At least 30 of the 32 cysteine residues are in the reduced form. [UniProt]
Cellular Localization	Cytoplasm. [UniProt]

Images



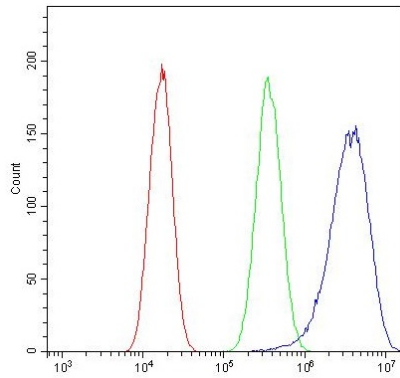
ARG42666 anti-Ribonuclease Inhibitor antibody IHC-P image

Immunohistochemistry: Paraffin-embedded Human intestinal cancer tissue. Antigen Retrieval: Heat mediation was performed in Citrate buffer (pH 6.0) for 20 min. The tissue section was blocked with 10% goat serum. The tissue section was then stained with ARG42666 anti-Ribonuclease Inhibitor antibody at 1 µg/ml dilution, overnight at 4°C.



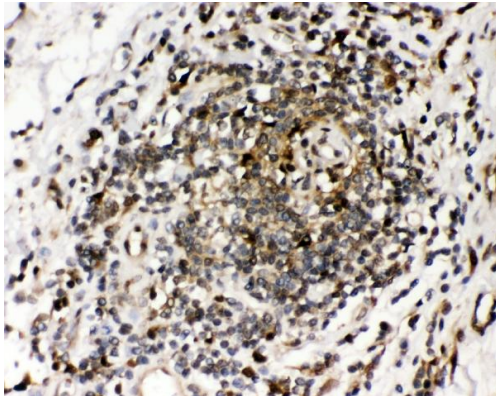
ARG42666 anti-Ribonuclease Inhibitor antibody WB image

Western blot: 50 µg of samples under reducing conditions. Human placenta, HeLa, SK-OV-3, Jurkat, U-87 MG, COS-7, SW620 and Caco-2 whole cell lysates stained with ARG42666 anti-Ribonuclease Inhibitor antibody at 0.5 µg/ml dilution, overnight at 4°C.



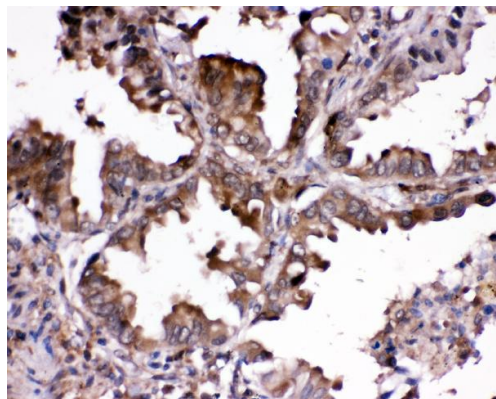
ARG42666 anti-Ribonuclease Inhibitor antibody FACS image

Flow Cytometry: A549 cells were blocked with 10% normal goat serum and then stained with ARG42666 anti-Ribonuclease Inhibitor antibody (blue) at $1\text{ }\mu\text{g}/10^6$ cells for 30 min at 20°C , followed by incubation with DyLight[®]488 labelled secondary antibody. Isotype control antibody (green) was Rabbit IgG ($1\text{ }\mu\text{g}/10^6$ cells) used under the same conditions. Unlabelled sample (red) was also used as a control.



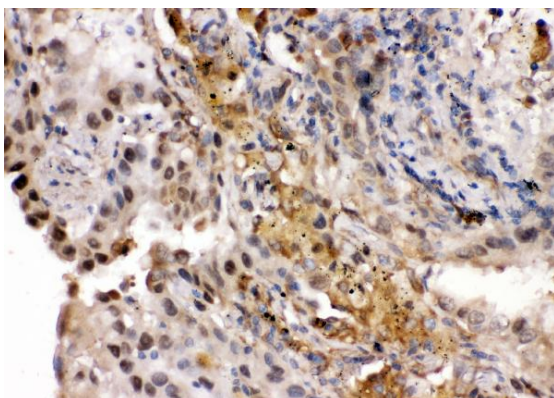
ARG42666 anti-Ribonuclease Inhibitor antibody IHC-P image

Immunohistochemistry: Paraffin-embedded Human intestinal cancer tissue. Antigen Retrieval: Heat mediation was performed in Citrate buffer (pH 6.0) for 20 min. The tissue section was blocked with 10% goat serum. The tissue section was then stained with ARG42666 anti-Ribonuclease Inhibitor antibody at $1\text{ }\mu\text{g}/\text{ml}$ dilution, overnight at 4°C .



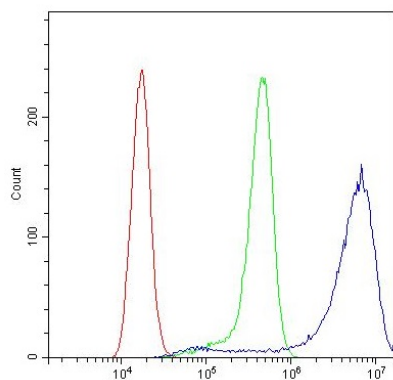
ARG42666 anti-Ribonuclease Inhibitor antibody IHC-P image

Immunohistochemistry: Paraffin-embedded Human lung cancer tissue. Antigen Retrieval: Heat mediation was performed in Citrate buffer (pH 6.0) for 20 min. The tissue section was blocked with 10% goat serum. The tissue section was then stained with ARG42666 anti-Ribonuclease Inhibitor antibody at $1\text{ }\mu\text{g}/\text{ml}$ dilution, overnight at 4°C .



ARG42666 anti-Ribonuclease Inhibitor antibody IHC-P image

Immunohistochemistry: Paraffin-embedded Human lung cancer tissue. Antigen Retrieval: Heat mediation was performed in Citrate buffer (pH 6.0) for 20 min. The tissue section was blocked with 10% goat serum. The tissue section was then stained with ARG42666 anti-Ribonuclease Inhibitor antibody at $1\text{ }\mu\text{g}/\text{ml}$ dilution, overnight at 4°C .



ARG42666 anti-Ribonuclease Inhibitor antibody FACS image

Flow Cytometry: A431 cells were blocked with 10% normal goat serum and then stained with ARG42666 anti-Ribonuclease Inhibitor antibody (blue) at $1 \mu\text{g}/10^6$ cells for 30 min at 20°C , followed by incubation with DyLight[®]488 labelled secondary antibody. Isotype control antibody (green) was Rabbit IgG ($1 \mu\text{g}/10^6$ cells) used under the same conditions. Unlabelled sample (red) was also used as a control.