

ARG42678 anti-ELAVL2 + ELAVL4 antibody

Package: 100 µl
Store at: -20°C

Summary

Product Description	Rabbit Polyclonal antibody recognizes ELAVL2 + ELAVL4
Tested Reactivity	Ms, Rat
Tested Application	ICC/IF, IHC-P, WB
Host	Rabbit
Clonality	Polyclonal
Isotype	IgG
Target Name	ELAVL2 + ELAVL4
Species	Human
Immunogen	Recombinant fusion protein corresponding to aa. 1-366 of Human ELAVL4 (NP_001138246.1).
Conjugation	Un-conjugated
Alternate Names	ELAVL2: HuB; ELAV-like neuronal protein 1; HUB; Hu-antigen B; Nervous system-specific RNA-binding protein Hel-N1; HELN1; ELAV-like protein 2 ELAVL4: HUD; HuD; Hu-antigen D; Paraneoplastic encephalomyelitis antigen HuD; PNEM; ELAV-like protein 4

Application Instructions

Application table	Application	Dilution
	ICC/IF	1:50 - 1:200
	IHC-P	1:50 - 1:200
	WB	1:500 - 1:2000
Application Note	* The dilutions indicate recommended starting dilutions and the optimal dilutions or concentrations should be determined by the scientist.	

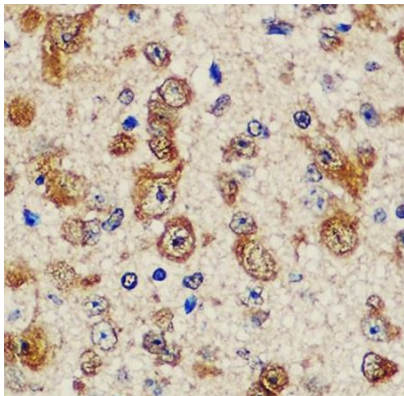
Properties

Form	Liquid
Purification	Affinity purified.
Buffer	PBS (pH 7.3), 0.02% Sodium azide and 50% Glycerol.
Preservative	0.02% Sodium azide
Stabilizer	50% Glycerol
Storage instruction	For continuous use, store undiluted antibody at 2-8°C for up to a week. For long-term storage, aliquot and store at -20°C. Storage in frost free freezers is not recommended. Avoid repeated freeze/thaw cycles. Suggest spin the vial prior to opening. The antibody solution should be gently mixed before use.
Note	For laboratory research only, not for drug, diagnostic or other use.

Bioinformation

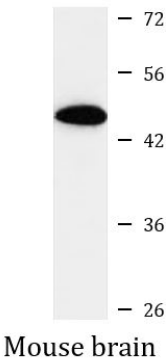
Gene Symbol	ELAVL2; ELAVL4
Gene Full Name	ELAV like neuron-specific RNA binding protein 2 ELAV like neuron-specific RNA binding protein 4
Background	ELAVL2: The protein encoded by this gene is a neural-specific RNA-binding protein that is known to bind to several 3' UTRs, including its own and also that of FOS and ID. The encoded protein may recognize a GAAA motif in the RNA. Three transcript variants encoding two different isoforms have been found for this gene. [provided by RefSeq, Jan 2010]
Function	ELAVL2: RNA-binding protein that binds to the 3' untranslated region (3'UTR) of target mRNAs (By similarity). Seems to recognize a GAAA motif (By similarity). Can bind to its own 3'UTR, the FOS 3'UTR and the ID 3'UTR (By similarity). [UniProt]
Calculated Mw	ELAVL2: 40 kDa ELAVL4: 42 kDa
PTM	ELAVL4: Methylation at Arg-243 by CARM1 weakens protective binding to the 3'-UTR of CDKN1A mRNA and down-regulates CDKN1A protein expression, thereby maintaining cells in a proliferative state. Methylation is inhibited by NGF, which facilitates neurite outgrowth (By similarity). [UniProt]

Images



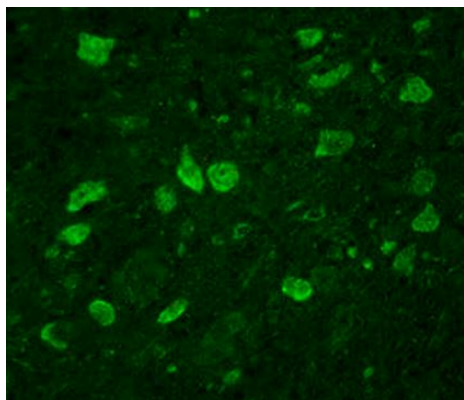
ARG42678 anti-ELAVL2 + ELAVL4 antibody IHC-P image

Immunohistochemistry: Paraffin-embedded Mouse brain tissue stained with ARG42678 anti-ELAVL2 + ELAVL4 antibody at 1:100 dilution.



ARG42678 anti-ELAVL2 + ELAVL4 antibody WB image

Western blot: 25 µg of Mouse brain lysate stained with ARG42678 anti-ELAVL2 + ELAVL4 antibody at 1:1000 dilution.



ARG42678 anti-ELAVL2 + ELAVL4 antibody IHC image

Immunohistochemistry: Rat brain tissue stained with ARG42678 anti-ELAVL2 + ELAVL4 antibody at 1:100 dilution.