

ARG42704 anti-eIF2B alpha antibody

Package: 50 µg
Store at: -20°C

Summary

Product Description	Rabbit Polyclonal antibody recognizes eIF2B alpha
Tested Reactivity	Hu, Ms, Rat
Tested Application	FACS, ICC/IF, IHC-P, WB
Host	Rabbit
Clonality	Polyclonal
Isotype	IgG
Target Name	eIF2B alpha
Species	Human
Immunogen	Synthetic peptide corresponding to a sequence of Human eIF2B alpha. (AESFKFVRLFPLNQD)
Conjugation	Un-conjugated
Alternate Names	Translation initiation factor eIF-2B subunit alpha; EIF2B; eIF-2B GDP-GTP exchange factor subunit alpha; EIF2BA

Application Instructions

Application table	Application	Dilution
	FACS	1:150 - 1:500
	ICC/IF	1:200 - 1:1000
	IHC-P	1:200 - 1:1000
	WB	1:500 - 1:2000
Application Note	* The dilutions indicate recommended starting dilutions and the optimal dilutions or concentrations should be determined by the scientist.	
Observed Size	~ 34 kDa	

Properties

Form	Liquid
Purification	Affinity purification with immunogen.
Buffer	0.2% Na ₂ HPO ₄ , 0.9% NaCl, 0.01% Sodium azide and 4% Trehalose.
Preservative	0.01% Sodium azide
Stabilizer	4% Trehalose
Concentration	0.5 mg/ml
Storage instruction	For continuous use, store undiluted antibody at 2-8°C for up to a week. For long-term storage, aliquot and store at -20°C or below. Storage in frost free freezers is not recommended. Avoid repeated

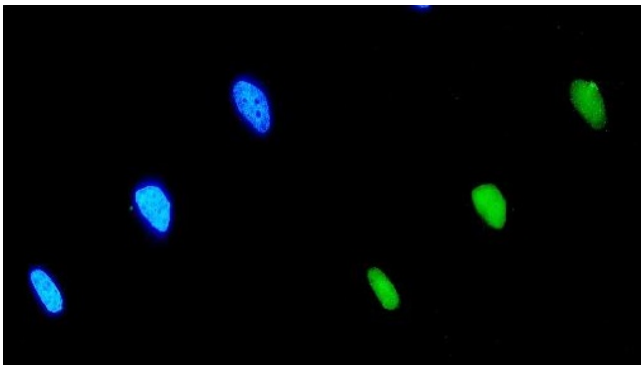
freeze/thaw cycles. Suggest spin the vial prior to opening. The antibody solution should be gently mixed before use.

Note For laboratory research only, not for drug, diagnostic or other use.

Bioinformation

Gene Symbol	EIF2B1
Gene Full Name	eukaryotic translation initiation factor 2B, subunit 1 alpha, 26kDa
Background	This gene encodes one of five subunits of eukaryotic translation initiation factor 2B (EIF2B), a GTP exchange factor for eukaryotic initiation factor 2 and an essential regulator for protein synthesis. Mutations in this gene and the genes encoding other EIF2B subunits have been associated with leukoencephalopathy with vanishing white matter. [provided by RefSeq, Oct 2009]
Function	Catalyzes the exchange of eukaryotic initiation factor 2-bound GDP for GTP. [UniProt]
Calculated Mw	34 kDa

Images



ARG42704 anti-eIF2B alpha antibody ICC/IF image

Immunofluorescence: HeLa cells were blocked with 10% goat serum and then stained with ARG42704 anti-eIF2B alpha antibody (green) at 5 µg/ml dilution, overnight at 4°C. DAPI (blue) for nuclear staining.

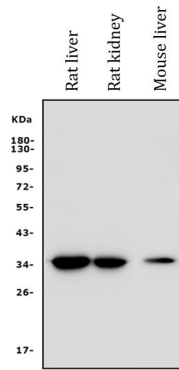


ARG42704 anti-eIF2B alpha antibody IHC-P image

Immunohistochemistry: Paraffin-embedded Human breast cancer tissue. Antigen Retrieval: Heat mediation was performed in EDTA buffer (pH 8.0). The tissue section was blocked with 10% goat serum. The tissue section was then stained with ARG42704 anti-eIF2B alpha antibody at 2 µg/ml dilution, overnight at 4°C.

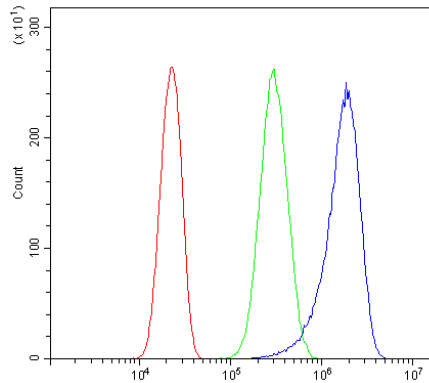
ARG42704 anti-eIF2B alpha antibody WB image

Western blot: 50 µg of samples under reducing condition. Rat liver, Rat kidney and Mouse liver lysates stained with ARG42704 anti-eIF2B alpha antibody at 0.5 µg/ml dilution, overnight at 4°C.



ARG42704 anti-eIF2B alpha antibody FACS image

Flow Cytometry: PC-3 cells were blocked with 10% normal goat serum and then stained with ARG42704 anti-eIF2B alpha antibody (blue) at 1 µg/10⁶ cells for 30 min at 20°C, followed by incubation with DyLight[®]488 labelled secondary antibody. Isotype control antibody (green) was rabbit IgG (1 µg/10⁶ cells) used under the same conditions. Unlabelled sample (red) was also used as a control.



ARG42704 anti-eIF2B alpha antibody IHC-P image

Immunohistochemistry: Paraffin-embedded Rat brain tissue. Antigen Retrieval: Heat mediation was performed in EDTA buffer (pH 8.0). The tissue section was blocked with 10% goat serum. The tissue section was then stained with ARG42704 anti-eIF2B alpha antibody at 2 µg/ml dilution, overnight at 4°C.

