

## ARG42708 anti-B Raf phospho (Thr401) antibody

Package: 100 µl  
Store at: -20°C

### Summary

|                     |  |
|---------------------|--|
| Product Description | Rabbit Polyclonal antibody recognizes B Raf phospho (Thr401)   |
| Tested Reactivity   | Hu, Ms, Rat  |
| Tested Application  | ICC/IF, IP, WB   |
| Host                | Rabbit   |
| Clonality           | Polyclonal   |
| Isotype             | IgG  |
| Target Name         | B Raf  |
| Species             | Human  |
| Immunogen           | Phosphospecific peptide around Thr401 Human B Raf.   |
| Conjugation         | Un-conjugated  |
| Alternate Names     | BRAF1; v-Raf murine sarcoma viral oncogene homolog B1; Proto-oncogene B-Raf; p94; Serine/threonine-protein kinase B-raf; RAFB1; EC 2.7.11.1; B-RAF1; NS7 |

### Application Instructions

| Application table | Application  | Dilution       |
|-------------------|--|----------------|
|                   | ICC/IF   | 1:50 - 1:200   |
|                   | IP   | 1:30           |
|                   | WB   | 1:500 - 1:2000 |
| Application Note  | * The dilutions indicate recommended starting dilutions and the optimal dilutions or concentrations should be determined by the scientist. |                |

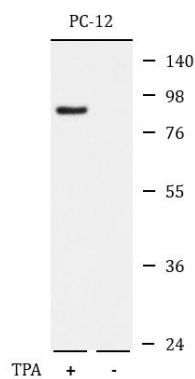
### Properties

|                     |   |
|---------------------|---|
| Form                | Liquid  |
| Purification        | Affinity purified.  |
| Buffer              | PBS (pH 7.4), 150 mM NaCl, 0.02% Sodium azide and 50% Glycerol.   |
| Preservative        | 0.02% Sodium azide  |
| Stabilizer          | 50% Glycerol  |
| Storage instruction | For continuous use, store undiluted antibody at 2-8°C for up to a week. For long-term storage, aliquot and store at -20°C. Storage in frost free freezers is not recommended. Avoid repeated freeze/thaw cycles. Suggest spin the vial prior to opening. The antibody solution should be gently mixed before use. |
| Note                | For laboratory research only, not for drug, diagnostic or other use.  |

Bioinformation

|                       |  |
|-----------------------|--|
| Gene Symbol           | BRAF   |
| Gene Full Name        | B-Raf proto-oncogene, serine/threonine kinase  |
| Background            | This gene encodes a protein belonging to the RAF family of serine/threonine protein kinases. This protein plays a role in regulating the MAP kinase/ERK signaling pathway, which affects cell division, differentiation, and secretion. Mutations in this gene, most commonly the V600E mutation, are the most frequently identified cancer-causing mutations in melanoma, and have been identified in various other cancers as well, including non-Hodgkin lymphoma, colorectal cancer, thyroid carcinoma, non-small cell lung carcinoma, hairy cell leukemia and adenocarcinoma of lung. Mutations in this gene are also associated with cardiofaciocutaneous, Noonan, and Costello syndromes, which exhibit overlapping phenotypes. A pseudogene of this gene has been identified on the X chromosome. [provided by RefSeq, Aug 2017] |
| Function              | Protein kinase involved in the transduction of mitogenic signals from the cell membrane to the nucleus (Probable). Phosphorylates MAP2K1, and thereby activates the MAP kinase signal transduction pathway (PubMed:21441910, PubMed:29433126). May play a role in the postsynaptic responses of hippocampal neurons (PubMed:1508179). [UniProt]  |
| Calculated Mw         | 84 kDa   |
| PTM                   | Phosphorylation at Ser-365 by SGK1 inhibits its activity.<br><br>Methylation at Arg-671 decreases stability and kinase activity.<br><br>Ubiquitinated by RNF149; which leads to proteasomal degradation. Polyubiquitinated at Lys-578 in response to EGF. [UniProt]  |
| Cellular Localization | Nucleus. Cytoplasm. Cell membrane. Note=Colocalizes with RGS14 and RAF1 in both the cytoplasm and membranes. [UniProt]   |

Images



ARG42708 anti-B Raf phospho (Thr401) antibody WB image

Western blot: PC-12 cells untreated (right) or treated with TPA (left). Cell lysates were stained with ARG42708 anti-B Raf phospho (Thr401) antibody.