

ARG42800 anti-GALT antibody

Package: 100 µl
Store at: -20°C

Summary

Product Description	Rabbit Polyclonal antibody recognizes GALT
Tested Reactivity	Hu, Ms, Rat
Tested Application	IP, WB
Host	Rabbit
Clonality	Polyclonal
Isotype	IgG
Target Name	GALT
Species	Human
Immunogen	Synthetic peptide of Human GALT.
Conjugation	Un-conjugated
Alternate Names	EC 2.7.7.12; Galactose-1-phosphate uridylyltransferase; Gal-1-P uridylyltransferase; UDP-glucose--hexose-1-phosphate uridylyltransferase

Application Instructions

Application table	Application	Dilution
	IP	1:20
	WB	1:1000
Application Note	* The dilutions indicate recommended starting dilutions and the optimal dilutions or concentrations should be determined by the scientist.	
Positive Control	Ramos	
Observed Size	~ 43 kDa	

Properties

Form	Liquid
Purification	Affinity purified.
Buffer	50 mM Tris-Glycine (pH 7.4), 150 mM NaCl, 0.01% Sodium azide, 40% Glycerol and 0.05% BSA.
Preservative	0.01% Sodium azide
Stabilizer	40% Glycerol and 0.05% BSA
Concentration	Batch dependent
Storage instruction	For continuous use, store undiluted antibody at 2-8°C for up to a week. For long-term storage, aliquot and store at -20°C. Storage in frost free freezers is not recommended. Avoid repeated freeze/thaw cycles. Suggest spin the vial prior to opening. The antibody solution should be gently mixed before use.

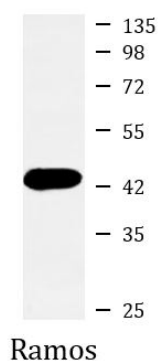
Note

For laboratory research only, not for drug, diagnostic or other use.

Bioinformation

Gene Symbol	GALT
Gene Full Name	galactose-1-phosphate uridylyltransferase
Background	Galactose-1-phosphate uridyl transferase (GALT) catalyzes the second step of the Leloir pathway of galactose metabolism, namely the conversion of UDP-glucose + galactose-1-phosphate to glucose-1-phosphate + UDP-galactose. The absence of this enzyme results in classic galactosemia in humans and can be fatal in the newborn period if lactose is not removed from the diet. The pathophysiology of galactosemia has not been clearly defined. Two transcript variants encoding different isoforms have been found for this gene. [provided by RefSeq, Apr 2012]
Function	Plays an important role in galactose metabolism. [UniProt]
Calculated Mw	43 kDa

Images



ARG42800 anti-GALT antibody WB image

Western blot: Ramos cell lysate stained with ARG42800 anti-GALT antibody at 1:1000 dilution.