

ARG42850 anti-Epsin 1 antibody

Package: 100 µl
Store at: -20°C

Summary

Product Description	Rabbit Polyclonal antibody recognizes Epsin 1
Tested Reactivity	Hu, Ms, Rat
Tested Application	IHC-P, WB
Host	Rabbit
Clonality	Polyclonal
Isotype	IgG
Target Name	Epsin 1
Species	Human
Immunogen	Recombinant fusion protein corresponding to aa. 130-180 of Human Epsin 1 (NP_037465.2).
Conjugation	Un-conjugated
Alternate Names	EH domain-binding mitotic phosphoprotein; EPS-15-interacting protein 1; Epsin-1

Application Instructions

Application table	Application	Dilution
	IHC-P	1:50 - 1:200
	WB	1:500 - 1:2000
Application Note	* The dilutions indicate recommended starting dilutions and the optimal dilutions or concentrations should be determined by the scientist.	
Positive Control	Mouse kidney	
Observed Size	~ 90 kDa	

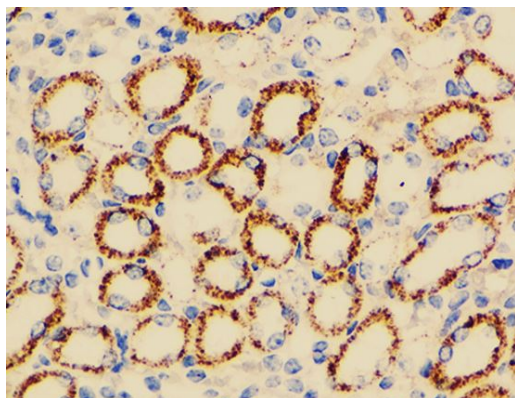
Properties

Form	Liquid
Purification	Affinity purified.
Buffer	PBS (pH 7.3), 0.02% Sodium azide and 50% Glycerol.
Preservative	0.02% Sodium azide
Stabilizer	50% Glycerol
Storage instruction	For continuous use, store undiluted antibody at 2-8°C for up to a week. For long-term storage, aliquot and store at -20°C. Storage in frost free freezers is not recommended. Avoid repeated freeze/thaw cycles. Suggest spin the vial prior to opening. The antibody solution should be gently mixed before use.
Note	For laboratory research only, not for drug, diagnostic or other use.

Bioinformation

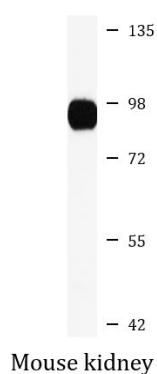
Gene Symbol	EPN1
Gene Full Name	epsin 1
Background	This gene encodes a member of the epsin protein family. The encoded protein binds clathrin and is involved in the endocytosis of clathrin-coated vesicles. Loss of function of this gene is associated with reduced tumor growth and progression in certain cancer types. [provided by RefSeq, Mar 2016]
Function	Binds to membranes enriched in phosphatidylinositol 4,5-bisphosphate (PtdIns(4,5)P2). Modifies membrane curvature and facilitates the formation of clathrin-coated invaginations (By similarity). Regulates receptor-mediated endocytosis. [UniProt]
Calculated Mw	60 kDa
PTM	Phosphorylated on serine and/or threonine residues in mitotic cells. Phosphorylation reduces interaction with REPS2, AP-2 and the membrane fraction. Depolarization of synaptosomes results in dephosphorylation. Ubiquitinated. [UniProt]
Cellular Localization	Cytoplasm. Cell membrane; Peripheral membrane protein. Nucleus. Membrane, clathrin-coated pit. Note=Associated with the cytoplasmic membrane at sites where clathrin-coated pits are forming. Colocalizes with clathrin and AP-2 in a punctate pattern on the plasma membrane. Detected in presynaptic nerve terminals and in Golgi stacks. May shuttle to the nucleus when associated with ZBTB16/ZNF145 (By similarity). [UniProt]

Images



ARG42850 anti-Epsin 1 antibody IHC-P image

Immunohistochemistry: Paraffin-embedded Mouse kidney tissue stained with ARG42850 anti-Epsin 1 antibody at 1:100 dilution.



ARG42850 anti-Epsin 1 antibody WB image

Western blot: 25 µg of Mouse kidney lysate stained with ARG42850 anti-Epsin 1 antibody at 1:1000 dilution.