

ARG42872 anti-DPYSL4 / CRMP3 antibody

Package: 100 µl
Store at: -20°C

Summary

Product Description	Rabbit Polyclonal antibody recognizes DPYSL4 / CRMP3
Tested Reactivity	Hu, Ms, Rat
Tested Application	WB
Host	Rabbit
Clonality	Polyclonal
Isotype	IgG
Target Name	DPYSL4 / CRMP3
Species	Human
Immunogen	Synthetic peptide of Human DPYSL4 / CRMP3.
Conjugation	Un-conjugated
Alternate Names	Collapsin response mediator protein 3; DRP-4; Dihydropyrimidinase-related protein 4; ULIP4; ULIP-4; CRMP-3; UNC33-like phosphoprotein 4; CRMP3

Application Instructions

Application table	<table> <tr> <th>Application</th><th>Dilution</th></tr> <tr> <td>WB</td><td>1:2000 - 1:10000</td></tr> </table>	Application	Dilution	WB	1:2000 - 1:10000
Application	Dilution				
WB	1:2000 - 1:10000				
Application Note	* The dilutions indicate recommended starting dilutions and the optimal dilutions or concentrations should be determined by the scientist.				
Positive Control	Rat brain				
Observed Size	~ 63 kDa				

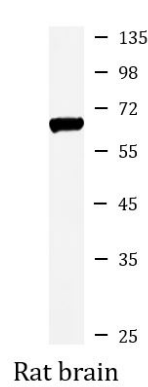
Properties

Form	Liquid
Purification	Affinity purified.
Buffer	50 mM Tris-Glycine (pH 7.4), 150 mM NaCl, 0.01% Sodium azide, 40% Glycerol and 0.05% BSA.
Preservative	0.01% Sodium azide
Stabilizer	40% Glycerol and 0.05% BSA
Concentration	Batch dependent
Storage instruction	For continuous use, store undiluted antibody at 2-8°C for up to a week. For long-term storage, aliquot and store at -20°C. Storage in frost free freezers is not recommended. Avoid repeated freeze/thaw cycles. Suggest spin the vial prior to opening. The antibody solution should be gently mixed before use.
Note	For laboratory research only, not for drug, diagnostic or other use.

Bioinformation

Gene Symbol	DPYSL4
Gene Full Name	dihydropyrimidinase-like 4
Function	Necessary for signaling by class 3 semaphorins and subsequent remodeling of the cytoskeleton. Plays a role in axon guidance, neuronal growth cone collapse and cell migration (By similarity). [UniProt]
Calculated Mw	62 kDa
Cellular Localization	Cytoplasm. [UniProt]

Images



ARG42872 anti-DPYSL4 / CRMP3 antibody WB image

Western blot: Rat brain lysate stained with ARG42872 anti-DPYSL4 / CRMP3 antibody at 1:1000 dilution.