

ARG42941 anti-SLC25A1 antibody

Package: 100 µl
Store at: -20°C

Summary

Product Description	Rabbit Polyclonal antibody recognizes SLC25A1
Tested Reactivity	Hu, Ms, Rat
Tested Application	ICC/IF, WB
Host	Rabbit
Clonality	Polyclonal
Isotype	IgG
Target Name	SLC25A1
Species	Human
Immunogen	Recombinant fusion protein corresponding to aa. 1-311 of Human SLC25A1 (NP_005975.1).
Conjugation	Un-conjugated
Alternate Names	SLC20A3; CTP; Citrate transport protein; Solute carrier family 25 member 1; D2L2AD; Tricarboxylate transport protein, mitochondrial; SEA; Tricarboxylate carrier protein

Application Instructions

Application table	Application	Dilution
	ICC/IF	1:50 - 1:200
	WB	1:200 - 1:2000
Application Note	* The dilutions indicate recommended starting dilutions and the optimal dilutions or concentrations should be determined by the scientist.	
Positive Control	BT-474	
Observed Size	~ 30 kDa	

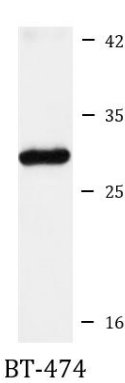
Properties

Form	Liquid
Purification	Affinity purified.
Buffer	PBS (pH 7.3), 0.02% Sodium azide and 50% Glycerol.
Preservative	0.02% Sodium azide
Stabilizer	50% Glycerol
Storage instruction	For continuous use, store undiluted antibody at 2-8°C for up to a week. For long-term storage, aliquot and store at -20°C. Storage in frost free freezers is not recommended. Avoid repeated freeze/thaw cycles. Suggest spin the vial prior to opening. The antibody solution should be gently mixed before use.
Note	For laboratory research only, not for drug, diagnostic or other use.

Bioinformation

Gene Symbol	SLC25A1
Gene Full Name	solute carrier family 25 (mitochondrial carrier; citrate transporter), member 1
Background	This gene encodes a member of the mitochondrial carrier subfamily of solute carrier proteins. Members of this family include nuclear-encoded transporters that translocate small metabolites across the mitochondrial membrane. This protein regulates the movement of citrate across the inner membranes of the mitochondria. Mutations in this gene have been associated with combined D-2- and L-2-hydroxyglutaric aciduria. Pseudogenes of this gene have been identified on chromosomes 7, 11, 16, and 19. Alternative splicing results in multiple transcript variants. [provided by RefSeq, Dec 2013]
Function	Citrate transporter that mediates the exchange of mitochondrial citrate for cytosolic malate (PubMed:29031613, PubMed:29238895). Also able to mediate the exchange of citrate for isocitrate, phosphoenolpyruvate, cis- but not trans-aconitate and to a lesser extend maleate and succinate (PubMed:29031613). Important for the bioenergetics of hepatic cells as it provides a carbon source for fatty acid and sterol biosyntheses, and NAD(+) for the glycolytic pathway. Required for proper neuromuscular junction formation (Probable). [UniProt]
Calculated Mw	34 kDa
Cellular Localization	Mitochondrion inner membrane; Multi-pass membrane protein. [UniProt]

Images



ARG42941 anti-SLC25A1 antibody WB image

Western blot: 25 µg of BT-474 cell lysate stained with ARG42941 anti-SLC25A1 antibody at 1:1000 dilution.