

ARG42961 anti-IGLL1 / Lambda 5 antibody

Package: 50 µg
Store at: -20°C

Summary

Product Description	Rabbit Polyclonal antibody recognizes IGLL1 / Lambda 5
Tested Reactivity	Hu, Ms, Rat
Tested Application	IHC-P, WB
Host	Rabbit
Clonality	Polyclonal
Isotype	IgG
Target Name	IGLL1 / Lambda 5
Species	Human
Immunogen	Recombinant protein corresponding to L38-S213 of Human IGLL1 / Lambda 5.
Conjugation	Un-conjugated
Alternate Names	IGLL; Immunoglobulin omega polypeptide; 14.1; IGVPB; Immunoglobulin lambda-like polypeptide 1; Immunoglobulin-related protein 14.1; CD179 antigen-like family member B; IGLJ14.1; Ig lambda-5; CD antigen CD179b; AGM2; CD179b; IGO; IGL5; IGL1; VPBEB2

Application Instructions

Application table	Application	Dilution
	IHC-P	1:200 - 1:1000
	WB	1:500 - 1:2000
Application Note	IHC-P: Antigen Retrieval: Heat mediation was performed in Citrate buffer (pH 6.0) for 20 min. * The dilutions indicate recommended starting dilutions and the optimal dilutions or concentrations should be determined by the scientist.	
Observed Size	~ 26 kDa	

Properties

Form	Liquid
Purification	Affinity purification with immunogen.
Buffer	0.2% Na ₂ HPO ₄ , 0.9% NaCl, 0.05% Sodium azide and 4% Trehalose.
Preservative	0.05% Sodium azide
Stabilizer	4% Trehalose
Concentration	0.5 mg/ml
Storage instruction	For continuous use, store undiluted antibody at 2-8°C for up to a week. For long-term storage, aliquot and store at -20°C or below. Storage in frost free freezers is not recommended. Avoid repeated freeze/thaw cycles. Suggest spin the vial prior to opening. The antibody solution should be gently mixed

before use.

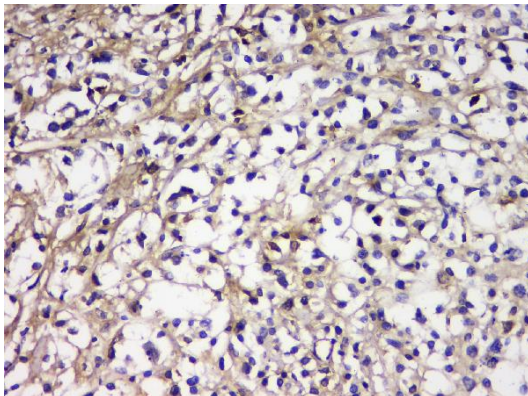
Note

For laboratory research only, not for drug, diagnostic or other use.

Bioinformation

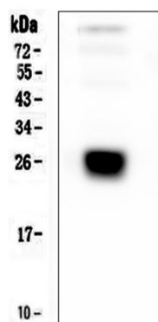
Gene Symbol	IGLL1
Gene Full Name	immunoglobulin lambda-like polypeptide 1
Background	<p>The preB cell receptor is found on the surface of proB and preB cells, where it is involved in transduction of signals for cellular proliferation, differentiation from the proB cell to the preB cell stage, allelic exclusion at the Ig heavy chain gene locus, and promotion of Ig light chain gene rearrangements. The preB cell receptor is composed of a membrane-bound Ig mu heavy chain in association with a heterodimeric surrogate light chain. This gene encodes one of the surrogate light chain subunits and is a member of the immunoglobulin gene superfamily. This gene does not undergo rearrangement. Mutations in this gene can result in B cell deficiency and agammaglobulinemia, an autosomal recessive disease in which few or no gamma globulins or antibodies are made. Two transcript variants encoding different isoforms have been found for this gene. [provided by RefSeq, Jul 2008]</p>
Function	Critical for B-cell development. [UniProt]
Calculated Mw	23 kDa
Cellular Localization	Secreted. [UniProt]

Images



ARG42961 anti-IGLL1 / Lambda 5 antibody IHC-P image

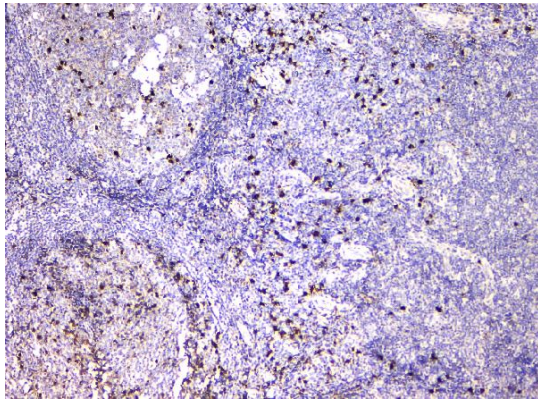
Immunohistochemistry: Paraffin-embedded Human B lymphocytic tumor tissue. Antigen Retrieval: Heat mediation was performed in Citrate buffer (pH 6.0) for 20 min. The tissue section was blocked with 10% goat serum. The tissue section was then stained with ARG42961 anti-IGLL1 / Lambda 5 antibody at 1 µg/ml dilution, overnight at 4°C.



Human placenta

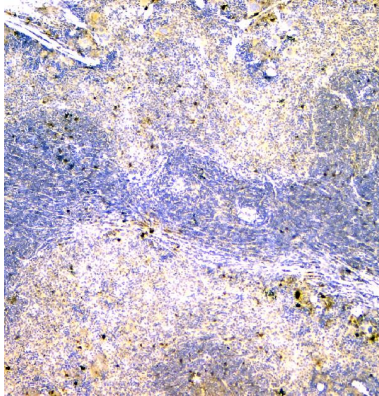
ARG42961 anti-IGLL1 / Lambda 5 antibody WB image

Western blot: 50 µg of sample under reducing conditions. Human placenta lysate stained with ARG42961 anti-IGLL1 / Lambda 5 antibody at 0.5 µg/ml dilution, overnight at 4°C.



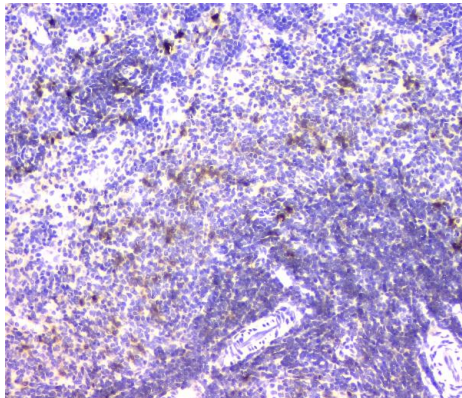
ARG42961 anti-IGLL1 / Lambda 5 antibody IHC-P image

Immunohistochemistry: Paraffin-embedded Human tonsil tissue. Antigen Retrieval: Heat mediation was performed in Citrate buffer (pH 6.0) for 20 min. The tissue section was blocked with 10% goat serum. The tissue section was then stained with ARG42961 anti-IGLL1 / Lambda 5 antibody at 1 µg/ml dilution, overnight at 4°C.



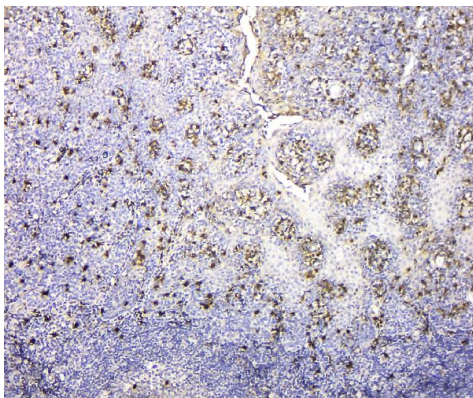
ARG42961 anti-IGLL1 / Lambda 5 antibody IHC-P image

Immunohistochemistry: Paraffin-embedded Mouse spleen tissue. Antigen Retrieval: Heat mediation was performed in Citrate buffer (pH 6.0) for 20 min. The tissue section was blocked with 10% goat serum. The tissue section was then stained with ARG42961 anti-IGLL1 / Lambda 5 antibody at 1 µg/ml dilution, overnight at 4°C.



ARG42961 anti-IGLL1 / Lambda 5 antibody IHC-P image

Immunohistochemistry: Paraffin-embedded Rat spleen tissue. Antigen Retrieval: Heat mediation was performed in Citrate buffer (pH 6.0) for 20 min. The tissue section was blocked with 10% goat serum. The tissue section was then stained with ARG42961 anti-IGLL1 / Lambda 5 antibody at 1 µg/ml dilution, overnight at 4°C.



ARG42961 anti-IGLL1 / Lambda 5 antibody IHC-P image

Immunohistochemistry: Paraffin-embedded Human tonsil tissue. Antigen Retrieval: Heat mediation was performed in Citrate buffer (pH 6.0) for 20 min. The tissue section was blocked with 10% goat serum. The tissue section was then stained with ARG42961 anti-IGLL1 / Lambda 5 antibody at 1 µg/ml dilution, overnight at 4°C.