

## ARG43040 anti-TRAM1 antibody

Package: 50 µg  
Store at: -20°C

### Summary

Product Description	Rabbit Polyclonal antibody recognizes TRAM1
Tested Reactivity	Hu, Rat
Tested Application	ICC/IF, IHC-Fr, IHC-P, WB
Host	Rabbit
Clonality	Polyclonal
Isotype	IgG
Target Name	TRAM1
Species	Human
Immunogen	Synthetic peptide corresponding to aa. 314-331 of Human TRAM1. (KFINFQLRRWREHSFQA)
Conjugation	Un-conjugated
Alternate Names	TRAM; TRAMP; PNAS8; Translocating chain-associated membrane protein 1

### Application Instructions

Application table	Application	Dilution
	ICC/IF	1:200 - 1:1000
	IHC-Fr	1:200 - 1:1000
	IHC-P	1:200 - 1:1000
	WB	1:500 - 1:2000
Application Note	* The dilutions indicate recommended starting dilutions and the optimal dilutions or concentrations should be determined by the scientist.	

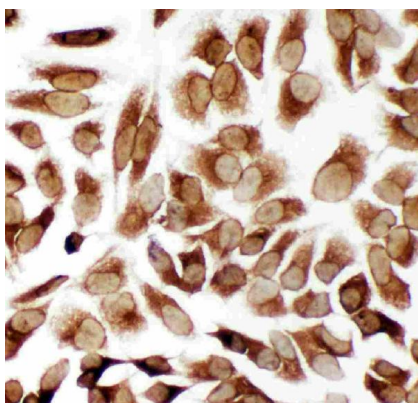
### Properties

Form	Liquid
Purification	Affinity purification with immunogen.
Buffer	0.2% Na <sub>2</sub> HPO <sub>4</sub> , 0.9% NaCl, 0.05% Thimerosal, 0.05% Sodium azide and 5% BSA.
Preservative	0.05% Thimerosal and 0.05% Sodium azide
Stabilizer	5% BSA
Concentration	0.5 mg/ml
Storage instruction	For continuous use, store undiluted antibody at 2-8°C for up to a week. For long-term storage, aliquot and store at -20°C or below. Storage in frost free freezers is not recommended. Avoid repeated freeze/thaw cycles. Suggest spin the vial prior to opening. The antibody solution should be gently mixed before use.

## Bioinformation

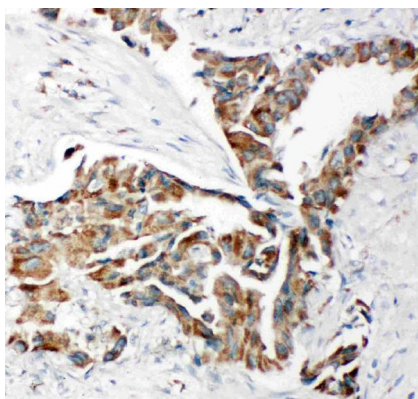
Gene Symbol	TRAM1
Gene Full Name	translocation associated membrane protein 1
Background	This gene encodes a multi-pass membrane protein that is part of the mammalian endoplasmic reticulum. The encoded protein influences glycosylation and facilitates the translocation of secretory proteins across the endoplasmic reticulum membrane by regulating which domains of the nascent polypeptide chain are visible to the cytosol during a translocational pause. [provided by RefSeq, Oct 2009]
Function	Stimulatory or required for the translocation of secretory proteins across the ER membrane. [UniProt]
Calculated Mw	43 kDa
Cellular Localization	Endoplasmic reticulum membrane; Multi-pass membrane protein. [UniProt]

## Images



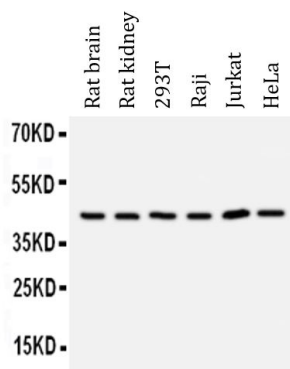
ARG43040 anti-TRAM1 antibody ICC image

Immunocytochemistry: HeLa cells stained with ARG43040 anti-TRAM1 antibody.



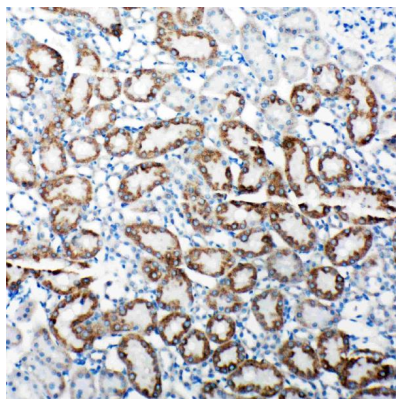
ARG43040 anti-TRAM1 antibody IHC-P image

Immunohistochemistry: Paraffin-embedded Human lung cancer tissue stained with ARG43040 anti-TRAM1 antibody.



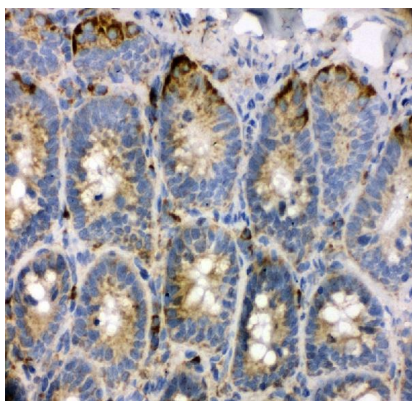
ARG43040 anti-TRAM1 antibody WB image

Western blot: Rat brain, Rat kidney, 293T, Raji, Jurkat and HeLa cell lysates stained with ARG43040 anti-TRAM1 antibody.



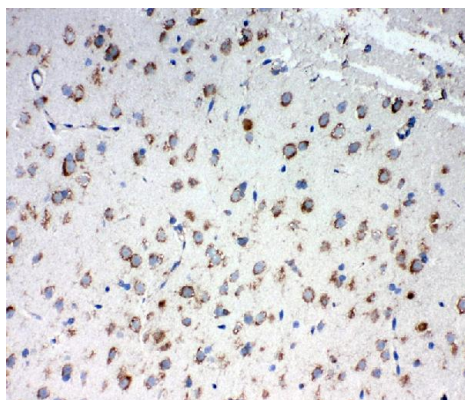
ARG43040 anti-TRAM1 antibody IHC-P image

Immunohistochemistry: Paraffin-embedded Rat kidney tissue stained with ARG43040 anti-TRAM1 antibody.



ARG43040 anti-TRAM1 antibody IHC-Fr image

Immunohistochemistry: Frozen section of Rat intestine tissue. The tissue section was blocked with 10% goat serum. The tissue section was then stained with ARG43040 anti-TRAM1 antibody at 1  $\mu$ g/ml dilution, overnight at 4°C.



ARG43040 anti-TRAM1 antibody IHC-Fr image

Immunohistochemistry: Frozen section of Rat brain tissue. The tissue section was blocked with 10% goat serum. The tissue section was then stained with ARG43040 anti-TRAM1 antibody at 1  $\mu$ g/ml dilution, overnight at 4°C.