

ARG43043 anti-Glut9 antibody

Package: 50 µg
Store at: -20°C

Summary

Product Description	Rabbit Polyclonal antibody recognizes Glut9
Tested Reactivity	Hu, Rat
Tested Application	FACS, IHC-P, WB
Host	Rabbit
Clonality	Polyclonal
Isotype	IgG
Target Name	Glut9
Species	Human
Immunogen	Synthetic peptide corresponding to aa. 262-297 of Human Glut9. (EKHNEARAVKAFQTLGKADVSEVEEVLAESEVRQR)
Conjugation	Un-conjugated
Alternate Names	Solute carrier family 2, facilitated glucose transporter member 9; GLUT-9; Glucose transporter type 9; UAQTL2; GLUT9; GLUTX; URATv1

Application Instructions

Application table	Application	Dilution
	FACS	1:150 - 1:500
	IHC-P	1:200 - 1:1000
	WB	1:500 - 1:2000
Application Note	IHC-P: Antigen Retrieval: Heat mediation was performed in Citrate buffer (pH 6.0) for 20 min or EDTA buffer (pH 8.0). * The dilutions indicate recommended starting dilutions and the optimal dilutions or concentrations should be determined by the scientist.	

Properties

Form	Liquid
Purification	Affinity purification with immunogen.
Buffer	0.2% Na ₂ HPO ₄ , 0.9% NaCl, 0.05% Sodium azide and 5% BSA.
Preservative	0.05% Sodium azide
Stabilizer	5% BSA
Concentration	0.5 mg/ml
Storage instruction	For continuous use, store undiluted antibody at 2-8°C for up to a week. For long-term storage, aliquot and store at -20°C or below. Storage in frost free freezers is not recommended. Avoid repeated

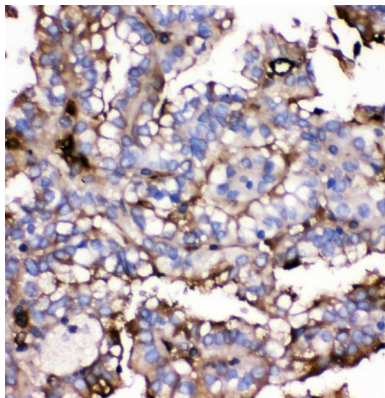
freeze/thaw cycles. Suggest spin the vial prior to opening. The antibody solution should be gently mixed before use.

Note For laboratory research only, not for drug, diagnostic or other use.

Bioinformation

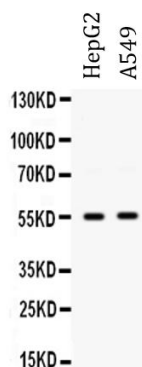
Gene Symbol	SLC2A9
Gene Full Name	solute carrier family 2 (facilitated glucose transporter), member 9
Background	This gene encodes a member of the SLC2A facilitative glucose transporter family. Members of this family play a significant role in maintaining glucose homeostasis. The encoded protein may play a role in the development and survival of chondrocytes in cartilage matrices. Two transcript variants encoding distinct isoforms have been identified for this gene. [provided by RefSeq, Jul 2008]
Function	Urate transporter, which may play a role in the urate reabsorption by proximal tubules (PubMed:18327257, PubMed:28083649). Does not transport glucose, fructose or galactose (PubMed:28083649). [UniProt]
Calculated Mw	59 kDa
Cellular Localization	Isoform 1: Basolateral cell membrane; Multi-pass membrane protein. Isoform 2: Apical cell membrane; Multi-pass membrane protein. Basolateral cell membrane; Multi-pass membrane protein. [UniProt]

Images



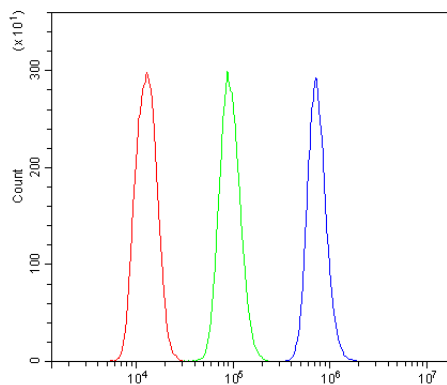
ARG43043 anti-Glut9 antibody IHC-P image

Immunohistochemistry: Paraffin-embedded Human renal cancer tissue. Antigen Retrieval: Heat mediation was performed in Citrate buffer (pH 6.0) for 20 min. The tissue section was blocked with 10% goat serum. The tissue section was then stained with ARG43043 anti-Glut9 antibody at 1 µg/ml dilution, overnight at 4°C.



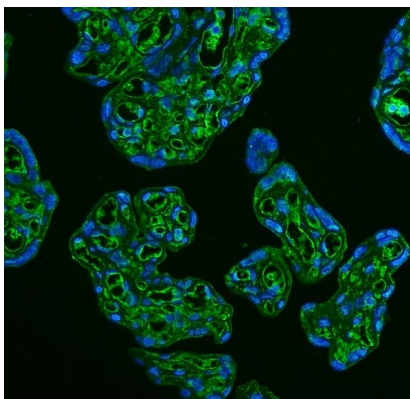
ARG43043 anti-Glut9 antibody WB image

Western blot: HepG2 and A549 whole cell lysates stained with ARG43043 anti-Glut9 antibody at 0.5 µg/ml dilution.



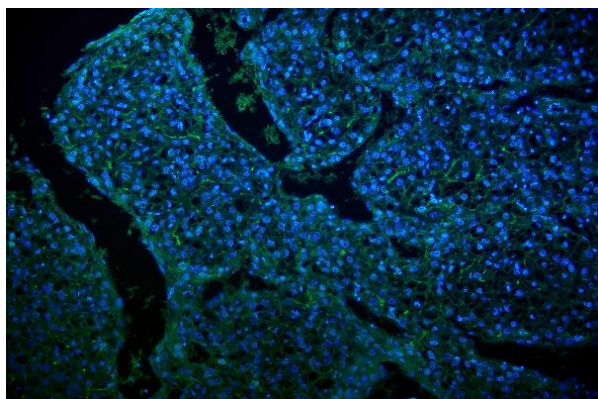
ARG43043 anti-Glut9 antibody FACS image

Flow Cytometry: U937 cells were blocked with 10% normal goat serum and then stained with ARG43043 anti-Glut9 antibody (blue) at 1 $\mu\text{g}/10^6$ cells for 30 min at 20°C, followed by incubation with DyLight®488 labelled secondary antibody. Isotype control antibody (green) was rabbit IgG (1 $\mu\text{g}/10^6$ cells) used under the same conditions. Unlabelled sample (red) was also used as a control.



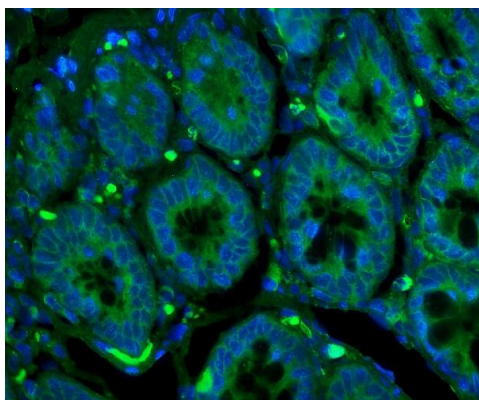
ARG43043 anti-Glut9 antibody IHC-P image

Immunohistochemistry: Paraffin-embedded Human placenta tissue. Antigen Retrieval: Heat mediation was performed in EDTA buffer (pH 8.0). The tissue section was blocked with 10% goat serum. The tissue section was then stained with ARG43043 anti-Glut9 antibody at 2 $\mu\text{g}/\text{ml}$ dilution, overnight at 4°C. The section was counterstained with DAPI (blue).



ARG43043 anti-Glut9 antibody IHC-P image

Immunohistochemistry: Paraffin-embedded Human liver cancer tissue. Antigen Retrieval: Heat mediation was performed in EDTA buffer (pH 8.0). The tissue section was blocked with 10% goat serum. The tissue section was then stained with ARG43043 anti-Glut9 antibody at 2 $\mu\text{g}/\text{ml}$ dilution, overnight at 4°C. The section was counterstained with DAPI (blue).



ARG43043 anti-Glut9 antibody IHC-P image

Immunohistochemistry: Paraffin-embedded Rat intestinal tissue. Antigen Retrieval: Heat mediation was performed in EDTA buffer (pH 8.0). The tissue section was blocked with 10% goat serum. The tissue section was then stained with ARG43043 anti-Glut9 antibody at 2 $\mu\text{g}/\text{ml}$ dilution, overnight at 4°C. The section was counterstained with DAPI (blue).