

ARG43129 anti-BCL9L antibody

Package: 50 µg
Store at: -20°C

Summary

Product Description	Rabbit Polyclonal antibody recognizes BCL9L
Tested Reactivity	Hu, Ms, Rat
Tested Application	FACS, ICC/IF, IHC-P
Host	Rabbit
Clonality	Polyclonal
Isotype	IgG
Target Name	BCL9L
Species	Human
Immunogen	Recombinant protein corresponding to E397-A666 of Human BCL9L.
Conjugation	Un-conjugated
Alternate Names	Protein BCL9-2; BCL9-2; B-cell CLL/lymphoma 9-like protein; DLNB11; BCL9-like protein; B-cell lymphoma 9-like protein

Application Instructions

Application table	Application	Dilution
	FACS	1:150 - 1:500
	ICC/IF	1:200 - 1:1000
	IHC-P	1:200 - 1:1000
Application Note	IHC-P: Antigen Retrieval: Heat mediation was performed in Citrate buffer (pH 6.0) for 20 min. * The dilutions indicate recommended starting dilutions and the optimal dilutions or concentrations should be determined by the scientist.	

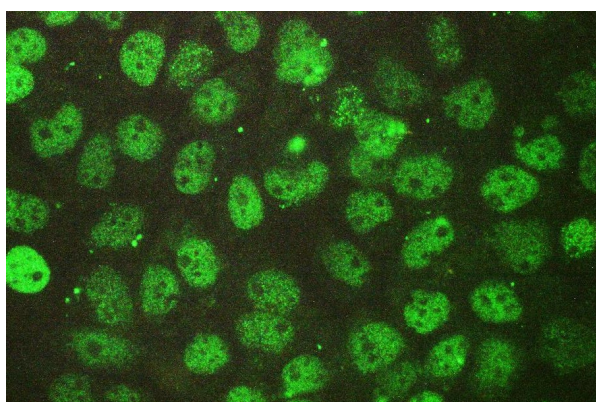
Properties

Form	Liquid
Purification	Immunogen affinity purified.
Buffer	0.2% Na ₂ HPO ₄ , 0.9% NaCl, 0.05% Sodium azide and 4% Trehalose.
Preservative	0.05% Sodium azide
Stabilizer	4% Trehalose
Concentration	0.5 mg/ml
Storage instruction	For continuous use, store undiluted antibody at 2-8°C for up to a week. For long-term storage, aliquot and store at -20°C or below. Storage in frost free freezers is not recommended. Avoid repeated freeze/thaw cycles. Suggest spin the vial prior to opening. The antibody solution should be gently mixed before use.

Bioinformation

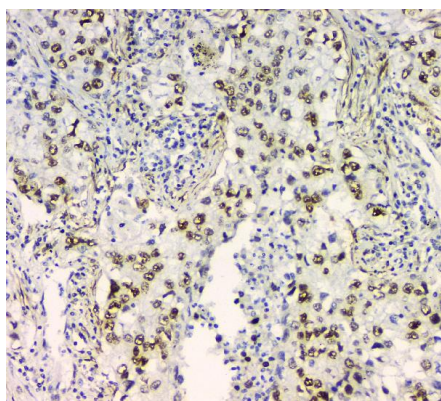
Gene Symbol	BCL9L
Gene Full Name	B-cell CLL/lymphoma 9-like
Function	Transcriptional regulator that acts as an activator. Promotes beta-catenin transcriptional activity. Plays a role in tumorigenesis. Enhances the neoplastic transforming activity of CTNNB1 (By similarity). [UniProt]
Calculated Mw	157 kDa
Cellular Localization	Nucleus. [UniProt]

Images



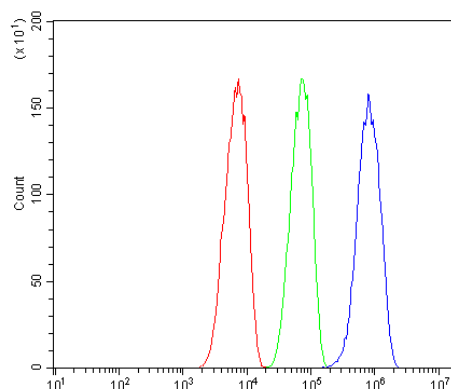
ARG43129 anti-BCL9L antibody ICC/IF image

Immunofluorescence: A431 cells were blocked with 10% goat serum and then stained with ARG43129 anti-BCL9L antibody (green) at 2 µg/ml dilution, overnight at 4°C.



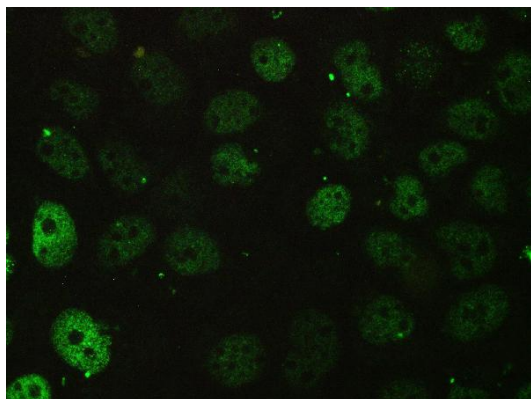
ARG43129 anti-BCL9L antibody IHC-P image

Immunohistochemistry: Paraffin-embedded Human lung cancer tissue. Antigen Retrieval: Heat mediation was performed in Citrate buffer (pH 6.0) for 20 min. The tissue section was blocked with 10% goat serum. The tissue section was then stained with ARG43129 anti-BCL9L antibody at 1 µg/ml dilution, overnight at 4°C.



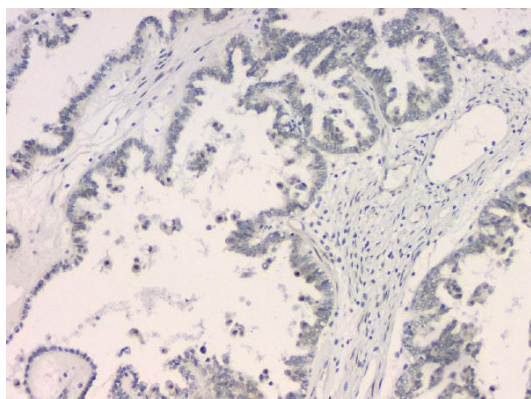
ARG43129 anti-BCL9L antibody FACS image

Flow Cytometry: SiHa cells were blocked with 10% normal goat serum and then stained with ARG43129 anti-BCL9L antibody (blue) at $1 \mu\text{g}/10^6$ cells for 30 min at 20°C , followed by incubation with DyLight®488 labelled secondary antibody. Isotype control antibody (green) was rabbit IgG ($1 \mu\text{g}/10^6$ cells) used under the same conditions. Unlabelled sample (red) was also used as a control.



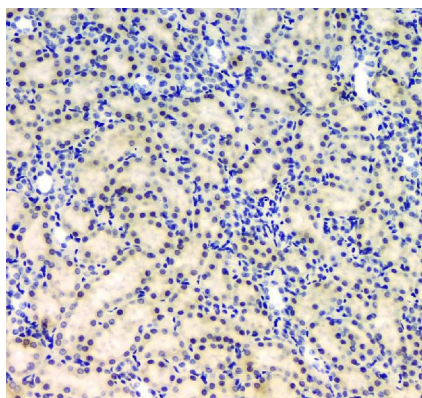
ARG43129 anti-BCL9L antibody ICC/IF image

Immunofluorescence: A431 cells were blocked with 10% goat serum and then stained with ARG43129 anti-BCL9L antibody (green) at $2 \mu\text{g}/\text{ml}$ dilution, overnight at 4°C .



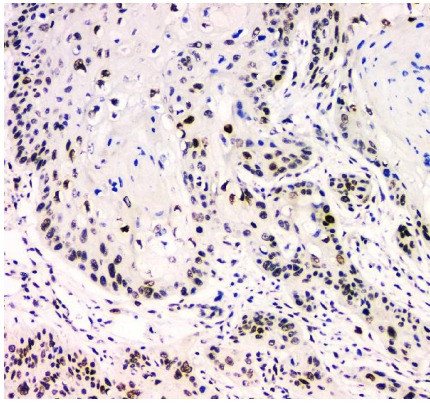
ARG43129 anti-BCL9L antibody IHC-P image

Immunohistochemistry: Paraffin-embedded Human ovarian cancer tissue. Antigen Retrieval: Heat mediation was performed in Citrate buffer (pH 6.0) for 20 min. The tissue section was blocked with 10% goat serum. The tissue section was then stained with ARG43129 anti-BCL9L antibody at $1 \mu\text{g}/\text{ml}$ dilution, overnight at 4°C .



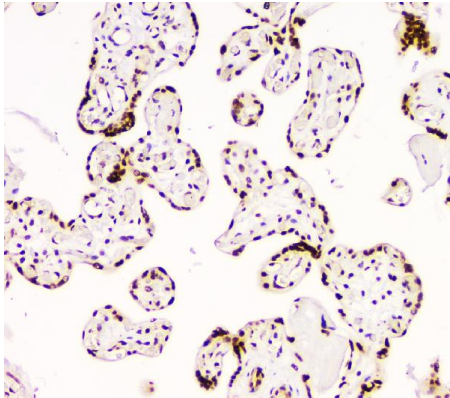
ARG43129 anti-BCL9L antibody IHC-P image

Immunohistochemistry: Paraffin-embedded Rat kidney tissue. Antigen Retrieval: Heat mediation was performed in Citrate buffer (pH 6.0) for 20 min. The tissue section was blocked with 10% goat serum. The tissue section was then stained with ARG43129 anti-BCL9L antibody at $1 \mu\text{g}/\text{ml}$ dilution, overnight at 4°C .



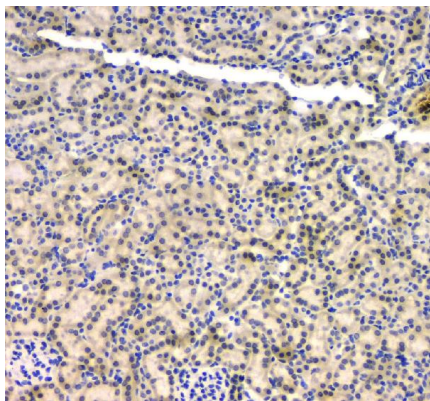
ARG43129 anti-BCL9L antibody IHC-P image

Immunohistochemistry: Paraffin-embedded Human oesophagus squama cancer tissue. Antigen Retrieval: Heat mediation was performed in Citrate buffer (pH 6.0) for 20 min. The tissue section was blocked with 10% goat serum. The tissue section was then stained with ARG43129 anti-BCL9L antibody at 1 µg/ml dilution, overnight at 4°C.



ARG43129 anti-BCL9L antibody IHC-P image

Immunohistochemistry: Paraffin-embedded Human placenta tissue. Antigen Retrieval: Heat mediation was performed in Citrate buffer (pH 6.0) for 20 min. The tissue section was blocked with 10% goat serum. The tissue section was then stained with ARG43129 anti-BCL9L antibody at 1 µg/ml dilution, overnight at 4°C.



ARG43129 anti-BCL9L antibody IHC-P image

Immunohistochemistry: Paraffin-embedded Mouse kidney tissue. Antigen Retrieval: Heat mediation was performed in Citrate buffer (pH 6.0) for 20 min. The tissue section was blocked with 10% goat serum. The tissue section was then stained with ARG43129 anti-BCL9L antibody at 1 µg/ml dilution, overnight at 4°C.