

## ARG43138 anti-FRMD6 / Willin antibody

Package: 50 µg  
Store at: -20°C

### Summary

Product Description	Rabbit Polyclonal antibody recognizes FRMD6 / Willin
Tested Reactivity	Hu, Ms, Rat
Tested Application	FACS, ICC/IF, IHC-P, WB
Host	Rabbit
Clonality	Polyclonal
Isotype	IgG
Target Name	FRMD6 / Willin
Species	Human
Immunogen	Recombinant protein corresponding to M1-E95 of Human FRMD6 / Willin.
Conjugation	Un-conjugated
Alternate Names	FERM domain-containing protein 6; Willin; c14_5320; C14orf31; EX1

### Application Instructions

Application table	Application	Dilution
	FACS	1:150 - 1:500
	ICC/IF	1:200 - 1:1000
	IHC-P	1:200 - 1:1000
	WB	1:500 - 1:2000
Application Note	IHC-P: Antigen Retrieval: Heat mediation was performed in EDTA buffer (pH 8.0). * The dilutions indicate recommended starting dilutions and the optimal dilutions or concentrations should be determined by the scientist.	
Observed Size	~ 70 kDa	

### Properties

Form	Liquid
Purification	Immunogen affinity purified.
Buffer	0.2% Na2HPO4, 0.9% NaCl, 0.05% Sodium azide and 4% Trehalose.
Preservative	0.05% Sodium azide
Stabilizer	4% Trehalose
Concentration	0.5 mg/ml
Storage instruction	For continuous use, store undiluted antibody at 2-8°C for up to a week. For long-term storage, aliquot and store at -20°C or below. Storage in frost free freezers is not recommended. Avoid repeated

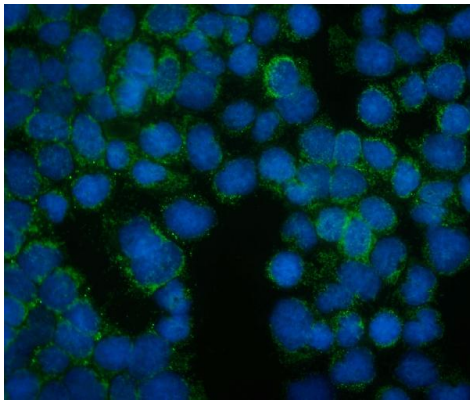
freeze/thaw cycles. Suggest spin the vial prior to opening. The antibody solution should be gently mixed before use.

**Note** For laboratory research only, not for drug, diagnostic or other use.

## Bioinformation

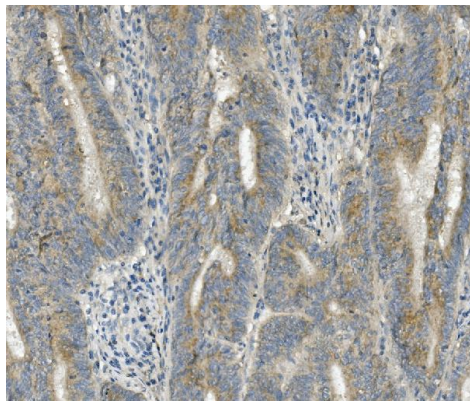
Gene Symbol	FRMD6
Gene Full Name	FERM domain containing 6
Calculated Mw	72 kDa
Cellular Localization	Cytoplasm. Cell membrane; Peripheral membrane protein; Cytoplasmic side. Note=Can colocalize with actin. [UniProt]

## Images



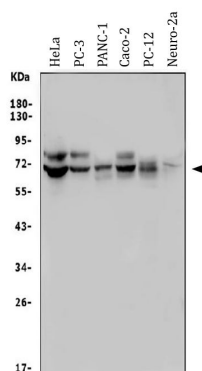
ARG43138 anti-FRMD6 / Willin antibody ICC/IF image

Immunofluorescence: A431 cells were blocked with 10% goat serum and then stained with ARG43138 anti-FRMD6 / Willin antibody (green) at 2 µg/ml dilution, overnight at 4°C. DAPI (blue) for nuclear staining.



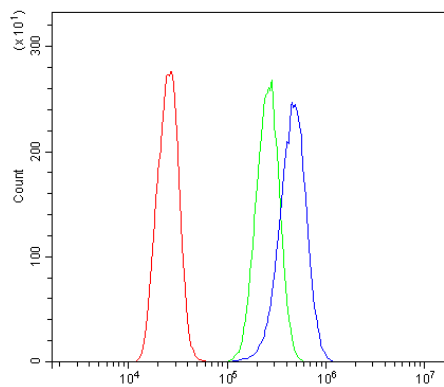
ARG43138 anti-FRMD6 / Willin antibody IHC-P image

Immunohistochemistry: Paraffin-embedded Human rectum cancer tissue. Antigen Retrieval: Heat mediation was performed in EDTA buffer (pH 8.0). The tissue section was blocked with 10% goat serum. The tissue section was then stained with ARG43138 anti-FRMD6 / Willin antibody at 1 µg/ml dilution, overnight at 4°C.



ARG43138 anti-FRMD6 / Willin antibody WB image

Western blot: 50 µg of sample under reducing conditions. HeLa, PC-3, PANC-1, Caco-2, PC-12 and Neuro-2a whole cell lysates stained with ARG43138 anti-FRMD6 / Willin antibody at 0.5 µg/ml dilution, overnight at 4°C.



#### ARG43138 anti-FRMD6 / Willin antibody FACS image

Flow Cytometry: A431 cells were blocked with 10% normal goat serum and then stained with ARG43138 anti-FRMD6 / Willin antibody (blue) at  $1 \mu\text{g}/10^6$  cells for 30 min at  $20^\circ\text{C}$ , followed by incubation with DyLight<sup>®</sup>488 labelled secondary antibody. Isotype control antibody (green) was rabbit IgG ( $1 \mu\text{g}/10^6$  cells) used under the same conditions. Unlabelled sample (red) was also used as a control.