

ARG43142 anti-REA antibody

Package: 50 µg
Store at: -20°C

Summary

Product Description	Rabbit Polyclonal antibody recognizes REA
Tested Reactivity	Hu, Ms, Rat
Tested Application	FACS, ICC/IF, IHC-P, WB
Host	Rabbit
Clonality	Polyclonal
Isotype	IgG
Target Name	REA
Species	Human
Immunogen	Recombinant protein corresponding to M1-K299 of Human REA.
Conjugation	Un-conjugated
Alternate Names	BAP; Bap37; BCAP37; D-prohibitin; Repressor of estrogen receptor activity; Prohibitin-2; PNAS-141; B-cell receptor-associated protein BAP37; p22; hBAP; REA

Application Instructions

Application table	Application	Dilution
	FACS	1:150 - 1:500
	ICC/IF	1:200 - 1:1000
	IHC-P	1:200 - 1:1000
	WB	1:500 - 1:2000
Application Note	IHC-P: Antigen Retrieval: Heat mediation was performed in EDTA buffer (pH 8.0). * The dilutions indicate recommended starting dilutions and the optimal dilutions or concentrations should be determined by the scientist.	
Observed Size	~ 32 kDa	

Properties

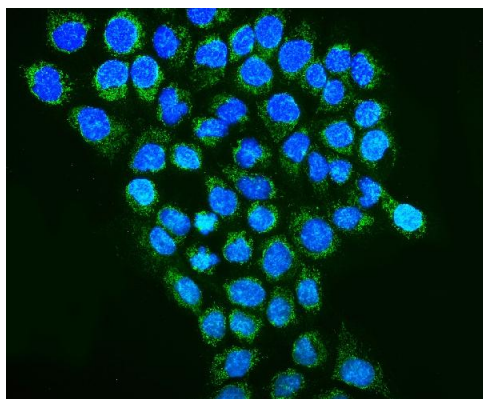
Form	Liquid
Purification	Immunogen affinity purified.
Buffer	0.2% Na ₂ HPO ₄ , 0.9% NaCl, 0.01% Sodium azide and 4% Trehalose.
Preservative	0.01% Sodium azide
Stabilizer	4% Trehalose
Concentration	0.5 mg/ml

Storage instruction	For continuous use, store undiluted antibody at 2-8°C for up to a week. For long-term storage, aliquot and store at -20°C or below. Storage in frost free freezers is not recommended. Avoid repeated freeze/thaw cycles. Suggest spin the vial prior to opening. The antibody solution should be gently mixed before use.
Note	For laboratory research only, not for drug, diagnostic or other use.

Bioinformation

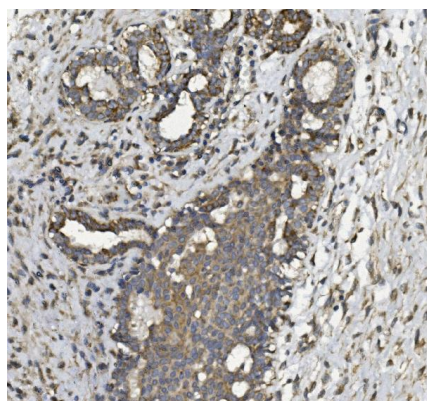
Gene Symbol	PHB2
Gene Full Name	prohibitin 2
Function	Acts as a mediator of transcriptional repression by nuclear hormone receptors via recruitment of histone deacetylases (By similarity). Functions as an estrogen receptor (ER)-selective coregulator that potentiates the inhibitory activities of antiestrogens and represses the activity of estrogens. Competes with NCOA1 for modulation of ER transcriptional activity. In mitochondria, regulates cytochrome-c oxidase assembly (COX) and mitochondrial respiration. Binding to sphingoid 1-phosphate (SPP) modulates its regulator activity (PubMed:20959514). [UniProt]
Calculated Mw	33 kDa
Cellular Localization	Mitochondrion inner membrane. Cytoplasm. Nucleus. [UniProt]

Images



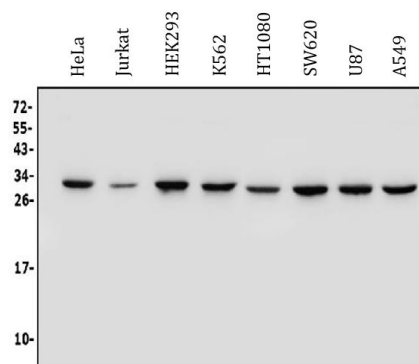
ARG43142 anti-REA antibody ICC/IF image

Immunofluorescence: A431 cells were blocked with 10% goat serum and then stained with ARG43142 anti-REA antibody (green) at 5 µg/ml dilution, overnight at 4°C. DAPI (blue) for nuclear staining.



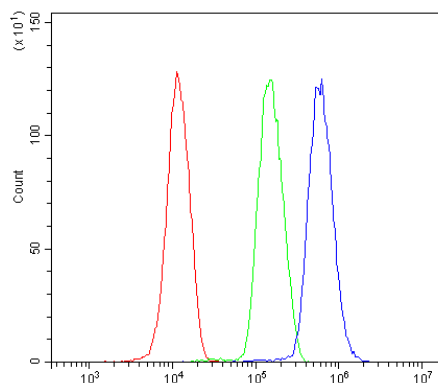
ARG43142 anti-REA antibody IHC-P image

Immunohistochemistry: Paraffin-embedded Human mammary cancer tissue. Antigen Retrieval: Heat mediation was performed in EDTA buffer (pH 8.0). The tissue section was blocked with 10% goat serum. The tissue section was then stained with ARG43142 anti-REA antibody at 2 µg/ml dilution, overnight at 4°C.



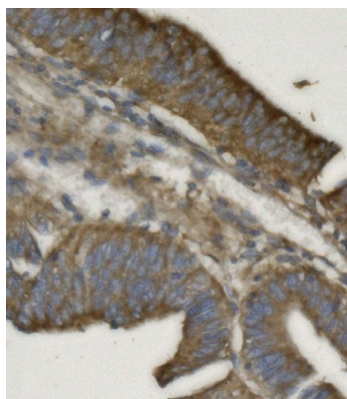
ARG43142 anti-REA antibody WB image

Western blot: 50 µg of sample under reducing conditions. HeLa, Jurkat, HEK293, K562, HT1080, SW620, U87 and A549 whole cell lysates stained with ARG43142 anti-REA antibody at 0.25 µg/ml dilution, overnight at 4°C.



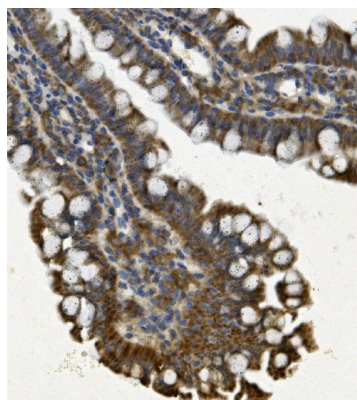
ARG43142 anti-REA antibody FACS image

Flow Cytometry: HL-60 cells were blocked with 10% normal goat serum and then stained with ARG43142 anti-REA antibody (blue) at 1 µg/10⁶ cells for 30 min at 20°C, followed by incubation with DyLight®488 labelled secondary antibody. Isotype control antibody (green) was rabbit IgG (1 µg/10⁶ cells) used under the same conditions. Unlabelled sample (red) was also used as a control.



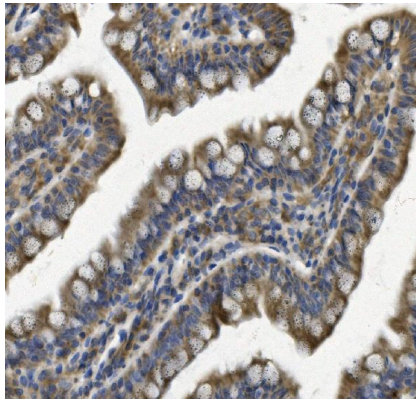
ARG43142 anti-REA antibody IHC-P image

Immunohistochemistry: Paraffin-embedded Human rectal cancer tissue. Antigen Retrieval: Heat mediation was performed in EDTA buffer (pH 8.0). The tissue section was blocked with 10% goat serum. The tissue section was then stained with ARG43142 anti-REA antibody at 2 µg/ml dilution, overnight at 4°C.



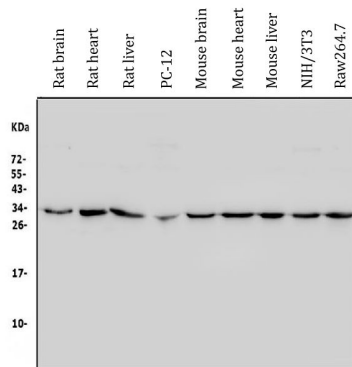
ARG43142 anti-REA antibody IHC-P image

Immunohistochemistry: Paraffin-embedded Mouse intestine tissue. Antigen Retrieval: Heat mediation was performed in EDTA buffer (pH 8.0). The tissue section was blocked with 10% goat serum. The tissue section was then stained with ARG43142 anti-REA antibody at 2 µg/ml dilution, overnight at 4°C.



ARG43142 anti-REA antibody IHC-P image

Immunohistochemistry: Paraffin-embedded Rat intestine tissue. Antigen Retrieval: Heat mediation was performed in EDTA buffer (pH 8.0). The tissue section was blocked with 10% goat serum. The tissue section was then stained with ARG43142 anti-REA antibody at 2 µg/ml dilution, overnight at 4°C.



ARG43142 anti-REA antibody WB image

Western blot: 50 µg of sample under reducing conditions. Rat brain, Rat heart, Rat liver, PC-12, Mouse brain, Mouse heart, Mouse liver, NIH/3T3, Raw264.7 whole cell lysates stained with ARG43142 anti-REA antibody at 0.25 µg/ml dilution, overnight at 4°C.