

ARG43146 anti-TRF1 antibody

Package: 100 µl
Store at: -20°C

Summary

Product Description	Rabbit Polyclonal antibody recognizes TRF1
Tested Reactivity	Hu, Rat
Tested Application	IHC-P, WB
Host	Rabbit
Clonality	Polyclonal
Isotype	IgG
Target Name	TRF1
Species	Human
Immunogen	Recombinant fusion protein corresponding to aa. 240-419 of Human TRF1 (NP_003209.2).
Conjugation	Un-conjugated
Alternate Names	Telomeric repeat-binding factor 1; NIMA-interacting protein 2; t-TRF1; TRF; TRF1; TRBF1; hTRF1-AS; TTAGGG repeat-binding factor 1; PIN2; Telomeric protein Pin2/TRF1

Application Instructions

Application table	Application	Dilution
	IHC-P	1:50 - 1:200
	WB	1:500 - 1:2000
Application Note	* The dilutions indicate recommended starting dilutions and the optimal dilutions or concentrations should be determined by the scientist.	
Positive Control	SH-SY5Y and Mouse eye	
Observed Size	~ 60 kDa	

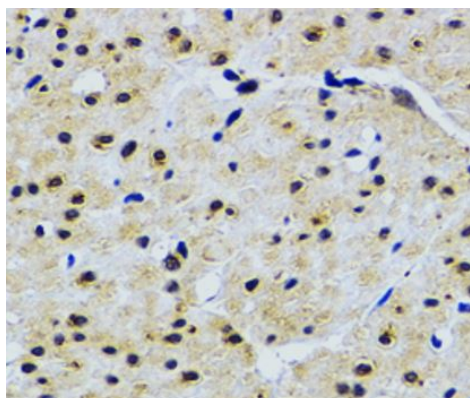
Properties

Form	Liquid
Purification	Affinity purified.
Buffer	PBS (pH 7.3), 0.02% Sodium azide and 50% Glycerol.
Preservative	0.02% Sodium azide
Stabilizer	50% Glycerol
Storage instruction	For continuous use, store undiluted antibody at 2-8°C for up to a week. For long-term storage, aliquot and store at -20°C. Storage in frost free freezers is not recommended. Avoid repeated freeze/thaw cycles. Suggest spin the vial prior to opening. The antibody solution should be gently mixed before use.
Note	For laboratory research only, not for drug, diagnostic or other use.

Bioinformation

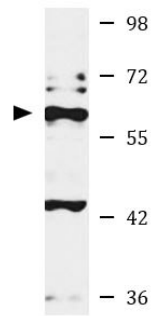
Gene Symbol	TERF1
Gene Full Name	telomeric repeat binding factor (NIMA-interacting) 1
Background	This gene encodes a telomere specific protein which is a component of the telomere nucleoprotein complex. This protein is present at telomeres throughout the cell cycle and functions as an inhibitor of telomerase, acting in cis to limit the elongation of individual chromosome ends. The protein structure contains a C-terminal Myb motif, a dimerization domain near its N-terminus and an acidic N-terminus. Two transcripts of this gene are alternatively spliced products. [provided by RefSeq, Jul 2008]
Function	Binds the telomeric double-stranded 5'-TTAGGG-3' repeat and negatively regulates telomere length. Involved in the regulation of the mitotic spindle. Component of the shelterin complex (telosome) that is involved in the regulation of telomere length and protection. Shelterin associates with arrays of double-stranded 5'-TTAGGG-3' repeats added by telomerase and protects chromosome ends; without its protective activity, telomeres are no longer hidden from the DNA damage surveillance and chromosome ends are inappropriately processed by DNA repair pathways. [UniProt]
Calculated Mw	50 kDa
PTM	Phosphorylated preferentially on Ser-219 in an ATM-dependent manner in response to ionizing DNA damage. ADP-ribosylation by TNKS1 or TNKS2 diminishes its ability to bind to telomeric DNA. Ubiquitinated by RLIM/RNF12, leading to its degradation by the proteasome. Ubiquitinated by a SCF (SKP1-CUL1-F-box protein) ubiquitin-protein ligase complex, leading to its degradation by the proteasome. [UniProt]
Cellular Localization	Nucleus. Cytoplasm, cytoskeleton, spindle. Chromosome, telomere. Note=Colocalizes with telomeric DNA in interphase and prophase cells. Telomeric localization decreases in metaphase, anaphase and telophase. Associates with the mitotic spindle. [UniProt]

Images



ARG43146 anti-TRF1 antibody IHC-P image

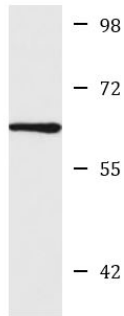
Immunohistochemistry: Paraffin-embedded Human gastric cancer tissue stained with ARG43146 anti-TRF1 antibody at 1:200 dilution.



SH-SY5Y

ARG43146 anti-TRF1 antibody WB image

Western blot: SH-SY5Y cell lysate stained with ARG43146 anti-TRF1 antibody.



Mouse eye

ARG43146 anti-TRF1 antibody WB image

Western blot: 25 µg of Mouse eye lysate stained with ARG43146 anti-TRF1 antibody at 1:1000 dilution.