

## ARG43186 anti-HLTF / SMARCA3 antibody

Package: 100 µl  
Store at: -20°C

### Summary

|                     |  |
|---------------------|--|
| Product Description | Rabbit Polyclonal antibody recognizes HLTF / SMARCA3   |
| Tested Reactivity   | Hu, Ms, Rat  |
| Tested Application  | ICC/IF, IHC-P, WB  |
| Host                | Rabbit   |
| Clonality           | Polyclonal   |
| Isotype             | IgG  |
| Target Name         | HLTF / SMARCA3   |
| Species             | Human  |
| Immunogen           | Synthetic peptide derived from Human HLTF / SMARCA3.   |
| Conjugation         | Un-conjugated  |
| Alternate Names     | SNF2L3; RNF80; DNA-binding protein/plasminogen activator inhibitor 1 regulator; EC 6.3.2.-; ZBU1; EC 3.6.4.-; SMARCA3; HLTF1; HIP116A; Sucrose nonfermenting protein 2-like 3; RING finger protein 80; SWI/SNF-related matrix-associated actin-dependent regulator of chromatin subfamily A member 3; HIP116; Helicase-like transcription factor |

### Application Instructions

| Application table | Application  | Dilution        |
|-------------------|--|-----------------|
|                   | ICC/IF   | 1:50 - 1:200    |
|                   | IHC-P  | 1:50 - 1:200    |
|                   | WB   | 1:1000 - 1:5000 |
| Application Note  | * The dilutions indicate recommended starting dilutions and the optimal dilutions or concentrations should be determined by the scientist. |                 |
| Positive Control  | K562   |                 |
| Observed Size     | ~ 120 kDa  |                 |

### Properties

|                     |  |
|---------------------|--|
| Form                | Liquid   |
| Purification        | Affinity purified.   |
| Buffer              | PBS (pH 7.4), 150 mM NaCl, 0.02% Sodium azide and 50% Glycerol.  |
| Preservative        | 0.02% Sodium azide   |
| Stabilizer          | 50% Glycerol   |
| Storage instruction | For continuous use, store undiluted antibody at 2-8°C for up to a week. For long-term storage, aliquot and store at -20°C. Storage in frost free freezers is not recommended. Avoid repeated freeze/thaw |

cycles. Suggest spin the vial prior to opening. The antibody solution should be gently mixed before use.

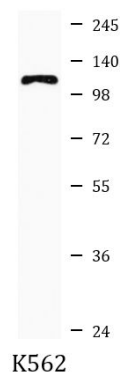
#### Note

For laboratory research only, not for drug, diagnostic or other use.

## Bioinformation

|                       |   |
|-----------------------|---|
| Gene Symbol           | HLTF  |
| Gene Full Name        | helicase-like transcription factor  |
| Background            | This gene encodes a member of the SWI/SNF family. Members of this family have helicase and ATPase activities and are thought to regulate transcription of certain genes by altering the chromatin structure around those genes. The encoded protein contains a RING finger DNA binding motif. Two transcript variants encoding the same protein have been found for this gene. However, use of an alternative translation start site produces an isoform that is truncated at the N-terminus compared to the full-length protein. [provided by RefSeq, Jul 2008]                          |
| Function              | Has both helicase and E3 ubiquitin ligase activities. Possesses intrinsic ATP-dependent nucleosome-remodeling activity; This activity may be required for transcriptional activation or repression of specific target promoters (By similarity). These may include the SERPINE1 and HIV-1 promoters and the SV40 enhancer, to which this protein can bind directly. Plays a role in error-free postreplication repair (PRR) of damaged DNA and maintains genomic stability through acting as a ubiquitin ligase for 'Lys-63'-linked polyubiquitination of chromatin-bound PCNA. [UniProt] |
| Calculated Mw         | 114 kDa   |
| Cellular Localization | Cytoplasm. Nucleus. Nucleus, nucleolus. Nucleus, nucleoplasm. Note=Nuclear localization is stimulated by progesterone. [UniProt]  |

## Images



ARG43186 anti-HLTF / SMARCA3 antibody WB image

Western blot: K562 cell lysate stained with ARG43186 anti-HLTF / SMARCA3 antibody.