

ARG43204 anti-SARS-CoV-2 Envelope protein antibody

Package: 100 µg
Store at: -20°C

Summary

Product Description	Rabbit Polyclonal antibody recognizes SARS-CoV-2 Envelope protein
Tested Reactivity	Virus
Tested Application	ELISA, ICC/IF, IHC-P
Specificity	The antibody can detect 50 ng of free peptide at 1 µg/ml in ELISA. But it cannot detect envelope recombinant protein in WB and ELISA.
Host	Rabbit
Clonality	Polyclonal
Isotype	IgG
Target Name	SARS-CoV-2 Envelope protein
Species	Virus
Immunogen	A 10-amino acid peptide within the first 50 amino acids of SARS-CoV-2 Envelope protein.
Conjugation	Un-conjugated

Application Instructions

Application table	Application	Dilution
	ELISA	1 µg/ml
	ICC/IF	1 - 3 µg/ml
	IHC-P	1 - 3 µg/ml
Application Note	Direct ELISA: Detection range: 32 - 2000 ng/ml (peptide). IHC-P: Antigen Retrieval: Heat mediation was performed in Citrate buffer (pH 6.0). * The dilutions indicate recommended starting dilutions and the optimal dilutions or concentrations should be determined by the scientist.	

Properties

Form	Liquid
Purification	Affinity purification with immunogen.
Buffer	PBS and 0.02% Sodium azide.
Preservative	0.02% Sodium azide
Concentration	1 mg/ml
Storage instruction	For continuous use, store undiluted antibody at 2-8°C for up to a week. For long-term storage, aliquot and store at -20°C or below. Storage in frost free freezers is not recommended. Avoid repeated freeze/thaw cycles. Suggest spin the vial prior to opening. The antibody solution should be gently mixed before use.

Bioinformation

Highlight

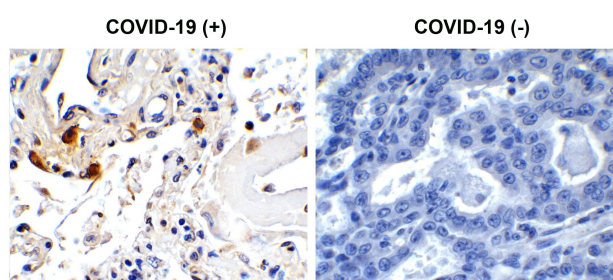
Related products:

[SARS-CoV antibodies](#); [SARS-CoV ELISA Kits](#); [SARS-CoV recombinant proteins](#); [Anti-Rabbit IgG secondary antibodies](#);

Related news:

[HMGB1, a biomarker and therapeutic target in COVID-19](#)

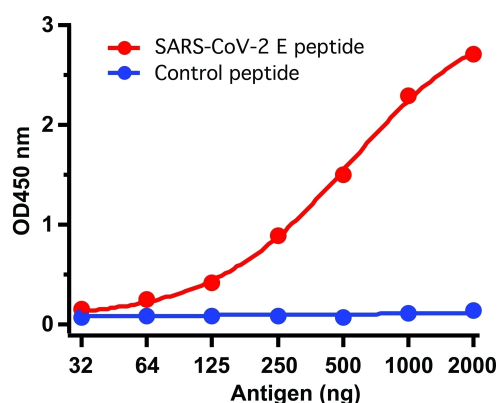
Images



ARG43204 anti-SARS-CoV-2 Envelope protein antibody IHC-P image

Immunohistochemistry: Paraffin-embedded COVID-19 patient lung tissue. Tissue was fixed with formaldehyde and blocked with 10% serum for 1 hour at RT. Antigen Retrieval: Heat mediation was performed in Citrate buffer (pH 6.0). The tissue section was stained with ARG43204 anti-SARS-CoV-2 Envelope protein antibody at 1 μ g/ml dilution, overnight at 4°C. Counter stained with Hematoxylin.

Strong signal of SARS-COV-2 envelope protein was observed in macrophage of COVID-19 patient lung, but not in non-COVID-19 patient lung.



ARG43204 anti-SARS-CoV-2 Envelope protein antibody ELISA image

Direct ELISA: SARS-CoV-2 Envelope peptide (red) or control peptide (blue) as coating antigen and stained with ARG43204 anti-SARS-CoV-2 Envelope protein antibody at 1 μ g/ml dilution. Detection range: 32 - 2000 ng/ml.