

ARG43220 anti-NLRP10 / NALP10 antibody

Package: 100 µl
Store at: -20°C

Summary

Product Description	Rabbit Polyclonal antibody recognizes NLRP10 / NALP10
Tested Reactivity	Hu, Ms, Rat
Tested Application	WB
Host	Rabbit
Clonality	Polyclonal
Isotype	IgG
Target Name	NLRP10 / NALP10
Species	Human
Immunogen	Recombinant fusion protein corresponding to aa. 1-300 of Human NLRP10 / NALP10 (NP_789791.1).
Conjugation	Un-conjugated
Alternate Names	CLR11.1; PAN5; Nucleotide-binding oligomerization domain protein 8; NALP10; PYNOD; NACHT, LRR and PYD domains-containing protein 10; NOD8

Application Instructions

Predict Reactivity Note	Mouse, Rat				
Application table	<table> <tr> <th>Application</th><th>Dilution</th></tr> <tr> <td>WB</td><td>1:500 - 1:2000</td></tr> </table>	Application	Dilution	WB	1:500 - 1:2000
Application	Dilution				
WB	1:500 - 1:2000				
Application Note	* The dilutions indicate recommended starting dilutions and the optimal dilutions or concentrations should be determined by the scientist.				
Positive Control	HT-29				
Observed Size	~ 75 kDa				

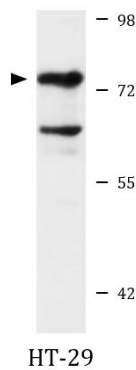
Properties

Form	Liquid
Purification	Affinity purified.
Buffer	PBS (pH 7.3), 0.02% Sodium azide and 50% Glycerol.
Preservative	0.02% Sodium azide
Stabilizer	50% Glycerol
Storage instruction	For continuous use, store undiluted antibody at 2-8°C for up to a week. For long-term storage, aliquot and store at -20°C. Storage in frost free freezers is not recommended. Avoid repeated freeze/thaw cycles. Suggest spin the vial prior to opening. The antibody solution should be gently mixed before use.
Note	For laboratory research only, not for drug, diagnostic or other use.

Bioinformation

Gene Symbol	NLRP10
Gene Full Name	NLR family, pyrin domain containing 10
Background	Members of the NALP protein family typically contain a NACHT domain, a NACHT-associated domain (NAD), a C-terminal leucine-rich repeat (LRR) region, and an N-terminal pyrin domain (PYD). The protein encoded by this gene belongs to the NALP protein family despite lacking the LRR region. This protein likely plays a regulatory role in the innate immune system. The protein belongs to the signal-induced multiprotein complex, the inflammasome, that activates the pro-inflammatory caspases, caspase-1 and caspase-5. Other experiments indicate that this gene acts as a multifunctional negative regulator of inflammation and apoptosis. [provided by RefSeq, Jul 2008]
Function	Inhibits autoprocessing of CASP1, CASP1-dependent IL1B secretion, PYCARD aggregation and PYCARD-mediated apoptosis but not apoptosis induced by FAS or BID (PubMed:15096476). Displays anti-inflammatory activity (PubMed:20393137). Required for immunity against C.albicans infection (By similarity). Involved in the innate immune response by contributing to proinflammatory cytokine release in response to invasive bacterial infection (PubMed:22672233). Contributes to T-cell-mediated inflammatory responses in the skin (By similarity). Plays a role in protection against periodontitis through its involvement in induction of IL1A via ERK activation in oral epithelial cells infected with periodontal pathogens (PubMed:28766990). Exhibits both ATPase and GTPase activities (PubMed:23861819). [UniProt]
Calculated Mw	75 kDa
Cellular Localization	Cytoplasm. Cell membrane; Peripheral membrane protein. Note=Cytoplasmic protein which is recruited to the cell membrane by NOD1 following invasive bacterial infection. [UniProt]

Images



ARG43220 anti-NLRP10 / NALP10 antibody WB image

Western blot: 25 µg of HT-29 cell lysate stained with ARG43220 anti-NLRP10 / NALP10 antibody at 1:1000 dilution.