

ARG43229 anti-EWSR1 / EWS antibody

Package: 50 µg
Store at: -20°C

Summary

Product Description	Rabbit Polyclonal antibody recognizes EWSR1 / EWS
Tested Reactivity	Hu, Ms, Rat
Tested Application	FACS, ICC/IF, IHC-Fr, IHC-P, WB
Host	Rabbit
Clonality	Polyclonal
Isotype	IgG
Target Name	EWSR1 / EWS
Species	Human
Immunogen	Synthetic peptide corresponding to aa. 369-399 of Human EWSR1 / EWS. (NDSVTLDDLADFFKQCGVVKMKNKRTGQPMIH)
Conjugation	Un-conjugated
Alternate Names	RNA-binding protein EWS; bK984G1.4; EWS-FLI1; Ewing sarcoma breakpoint region 1 protein; EWS; EWS oncogene

Application Instructions

Application table	Application	Dilution
	FACS	1:150 - 1:500
	ICC/IF	1:200 - 1:1000
	IHC-Fr	1:200 - 1:1000
	IHC-P	1:200 - 1:1000
	WB	1:500 - 1:2000
Application Note	IHC-P: Antigen Retrieval: Heat mediation was performed in Citrate buffer (pH 6.0) for 20 min. * The dilutions indicate recommended starting dilutions and the optimal dilutions or concentrations should be determined by the scientist.	
Observed Size	~ 93 kDa	

Properties

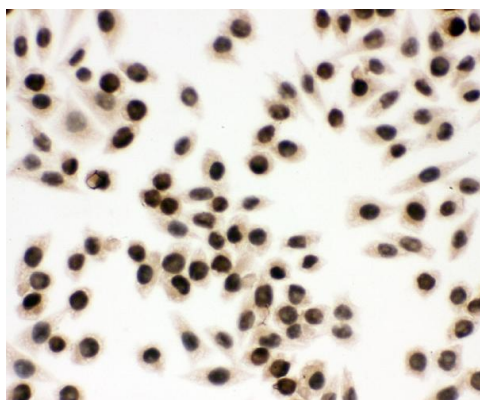
Form	Liquid
Purification	Affinity purification with immunogen.
Buffer	0.2% Na ₂ HPO ₄ , 0.9% NaCl, 0.05% Sodium azide and 5% BSA.
Preservative	0.05% Sodium azide
Stabilizer	5% BSA

Concentration	0.5 mg/ml
Storage instruction	For continuous use, store undiluted antibody at 2-8°C for up to a week. For long-term storage, aliquot and store at -20°C or below. Storage in frost free freezers is not recommended. Avoid repeated freeze/thaw cycles. Suggest spin the vial prior to opening. The antibody solution should be gently mixed before use.
Note	For laboratory research only, not for drug, diagnostic or other use.

Bioinformation

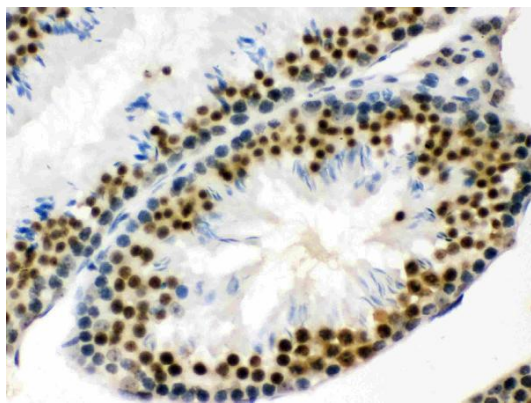
Gene Symbol	EWSR1
Gene Full Name	EWS RNA-binding protein 1
Background	This gene encodes a multifunctional protein that is involved in various cellular processes, including gene expression, cell signaling, and RNA processing and transport. The protein includes an N-terminal transcriptional activation domain and a C-terminal RNA-binding domain. Chromosomal translocations between this gene and various genes encoding transcription factors result in the production of chimeric proteins that are involved in tumorigenesis. These chimeric proteins usually consist of the N-terminal transcriptional activation domain of this protein fused to the C-terminal DNA-binding domain of the transcription factor protein. Mutations in this gene, specifically a t(11;22)(q24;q12) translocation, are known to cause Ewing sarcoma as well as neuroectodermal and various other tumors. Alternative splicing of this gene results in multiple transcript variants. Related pseudogenes have been identified on chromosomes 1 and 14. [provided by RefSeq, Jul 2009]
Function	Might normally function as a transcriptional repressor. EWS-fusion-proteins (EFPS) may play a role in the tumorigenic process. They may disturb gene expression by mimicking, or interfering with the normal function of CTD-POLII within the transcription initiation complex. They may also contribute to an aberrant activation of the fusion protein target genes. [UniProt]
Calculated Mw	68 kDa
PTM	Phosphorylated; calmodulin-binding inhibits phosphorylation of Ser-266. Highly methylated on arginine residues. Methylation is mediated by PRMT1 and, at lower level by PRMT8. [UniProt]
Cellular Localization	Nucleus. Cytoplasm. Cell membrane. Note=Relocates from cytoplasm to ribosomes upon PTK2B/FAK2 activation. [UniProt]

Images



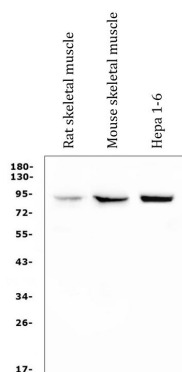
ARG43229 anti-EWSR1 / EWS antibody ICC image

Immunocytochemistry: SMMC-7721 cells stained with ARG43229 anti-EWSR1 / EWS antibody at 1 µg/ml dilution, overnight at 4°C.



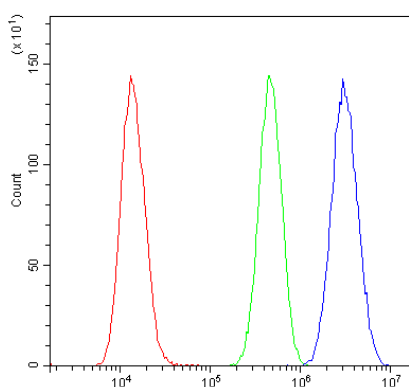
ARG43229 anti-EWSR1 / EWS antibody IHC-P image

Immunohistochemistry: Paraffin-embedded Mouse testis tissue. Antigen Retrieval: Heat mediation was performed in Citrate buffer (pH 6.0) for 20 min. The tissue section was blocked with 10% goat serum. The tissue section was then stained with ARG43229 anti-EWSR1 / EWS antibody at 1 µg/ml dilution, overnight at 4°C.



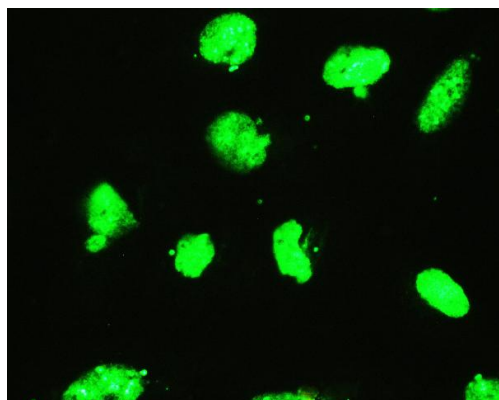
ARG43229 anti-EWSR1 / EWS antibody WB image

Western blot: 50 µg of sample under reducing conditions. Rat skeletal muscle, Mouse skeletal muscle and Hepa 1-6 whole cell lysate stained with ARG43229 anti-EWSR1 / EWS antibody at 0.5 µg/ml dilution, overnight at 4°C.



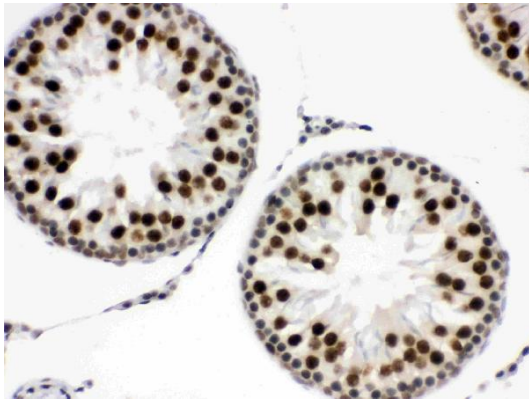
ARG43229 anti-EWSR1 / EWS antibody FACS image

Flow Cytometry: U2OS cells were blocked with 10% normal goat serum and then stained with ARG43229 anti-EWSR1 / EWS antibody (blue) at 1 µg/10⁶ cells for 30 min at 20°C, followed by incubation with DyLight®488 labelled secondary antibody. Isotype control antibody (green) was rabbit IgG (1 µg/10⁶ cells) used under the same conditions. Unlabelled sample (red) was also used as a control.



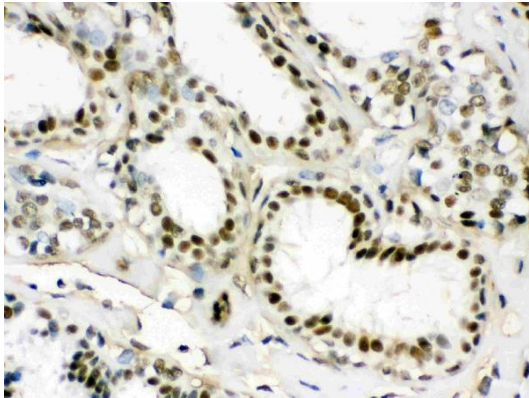
ARG43229 anti-EWSR1 / EWS antibody ICC/IF image

Immunofluorescence: U2OS cells stained with ARG43229 anti-EWSR1 / EWS antibody (green) at 2 µg/ml dilution, overnight at 4°C.



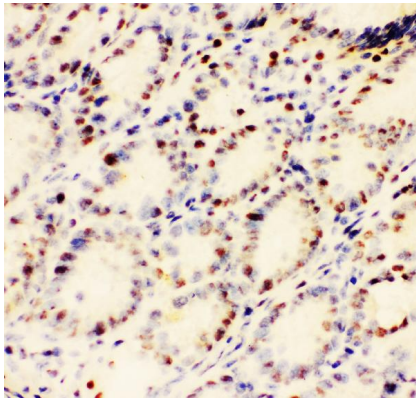
ARG43229 anti-EWSR1 / EWS antibody IHC-P image

Immunohistochemistry: Paraffin-embedded Rat testis tissue. Antigen Retrieval: Heat mediation was performed in Citrate buffer (pH 6.0) for 20 min. The tissue section was blocked with 10% goat serum. The tissue section was then stained with ARG43229 anti-EWSR1 / EWS antibody at 1 µg/ml dilution, overnight at 4°C.



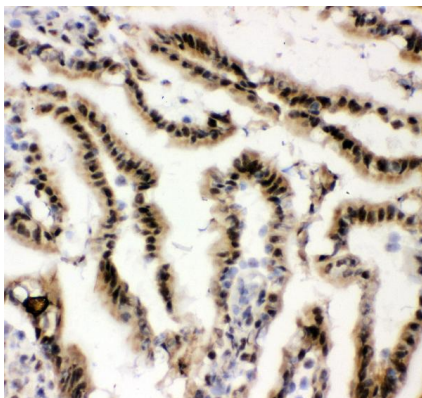
ARG43229 anti-EWSR1 / EWS antibody IHC-P image

Immunohistochemistry: Paraffin-embedded Human mammary cancer tissue. Antigen Retrieval: Heat mediation was performed in Citrate buffer (pH 6.0) for 20 min. The tissue section was blocked with 10% goat serum. The tissue section was then stained with ARG43229 anti-EWSR1 / EWS antibody at 1 µg/ml dilution, overnight at 4°C.



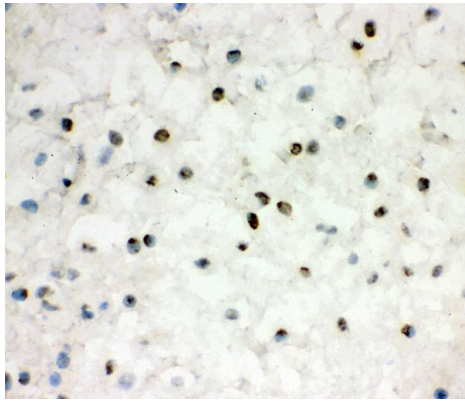
ARG43229 anti-EWSR1 / EWS antibody IHC-Fr image

Immunohistochemistry: Frozen section of Mouse intestine tissue. The tissue section was blocked with 10% goat serum. The tissue section was then stained with ARG43229 anti-EWSR1 / EWS antibody at 1 µg/ml dilution, overnight at 4°C.



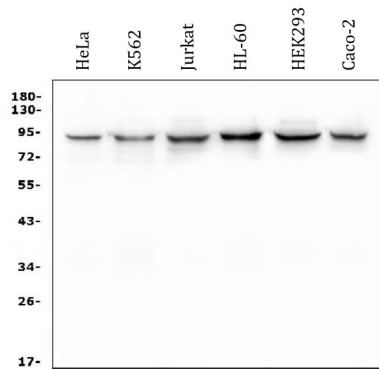
ARG43229 anti-EWSR1 / EWS antibody IHC-Fr image

Immunohistochemistry: Frozen section of Rat intestine tissue. The tissue section was blocked with 10% goat serum. The tissue section was then stained with ARG43229 anti-EWSR1 / EWS antibody at 1 µg/ml dilution, overnight at 4°C.



ARG43229 anti-EWSR1 / EWS antibody IHC-Fr image

Immunohistochemistry: Frozen section of Human placenta tissue. The tissue section was blocked with 10% goat serum. The tissue section was then stained with ARG43229 anti-EWSR1 / EWS antibody at 1 µg/ml dilution, overnight at 4°C.



ARG43229 anti-EWSR1 / EWS antibody WB image

Western blot: 50 µg of sample under reducing conditions. HeLa, K562, Jurkat, HL-60, HEK293 and Caco-2 whole cell lysate stained with ARG43229 anti-EWSR1 / EWS antibody at 0.5 µg/ml dilution, overnight at 4°C.