

## ARG43271 anti-ARL8B antibody

Package: 100 µl  
Store at: -20°C

### Summary

Product Description	Rabbit Polyclonal antibody recognizes ARL8B
Tested Reactivity	Hu, Ms
Tested Application	ICC/IF, WB
Host	Rabbit
Clonality	Polyclonal
Isotype	IgG
Target Name	ARL8B
Species	Human
Immunogen	Recombinant fusion protein corresponding to aa. 127-186 of Human ARL8B (NP_060654.1).
Conjugation	Un-conjugated
Alternate Names	Novel small G protein indispensable for equal chromosome segregation 1; ARL10C; ADP-ribosylation factor-like protein 8B; Gie1; ADP-ribosylation factor-like protein 10C

### Application Instructions

Application table	Application	Dilution
	ICC/IF	1:50 - 1:200
	WB	1:500 - 1:3000
Application Note	* The dilutions indicate recommended starting dilutions and the optimal dilutions or concentrations should be determined by the scientist.	
Positive Control	LO2	
Observed Size	~ 22 kDa	

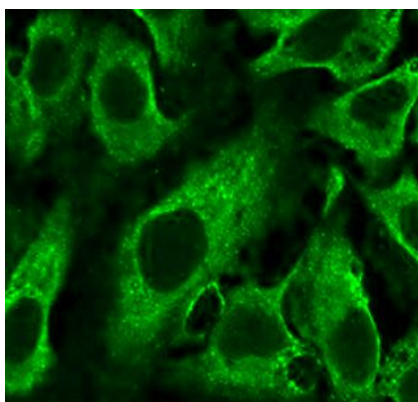
### Properties

Form	Liquid
Purification	Affinity purified.
Buffer	PBS (pH 7.3), 0.02% Sodium azide and 50% Glycerol.
Preservative	0.02% Sodium azide
Stabilizer	50% Glycerol
Storage instruction	For continuous use, store undiluted antibody at 2-8°C for up to a week. For long-term storage, aliquot and store at -20°C. Storage in frost free freezers is not recommended. Avoid repeated freeze/thaw cycles. Suggest spin the vial prior to opening. The antibody solution should be gently mixed before use.
Note	For laboratory research only, not for drug, diagnostic or other use.

## Bioinformation

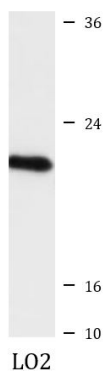
Gene Symbol	ARL8B
Gene Full Name	ADP-ribosylation factor-like 8B
Function	Plays a role in lysosome motility (PubMed:16537643, PubMed:25898167). In neurons, mediates the anterograde axonal long-range transport of presynaptic lysosome-related vesicles required for presynaptic biogenesis and synaptic function (By similarity). May play a role in chromosome segregation (PubMed:15331635). [UniProt]
Calculated Mw	22 kDa
Cellular Localization	Late endosome membrane. Lysosome membrane. Cytoplasm, cytoskeleton, spindle. Note=Localizes with microtubules at the spindle mid-zone during mitosis. [UniProt]

## Images



ARG43271 anti-ARL8B antibody ICC/IF image

Immunofluorescence: U2OS cells stained with ARG43271 anti-ARL8B antibody at 1:100 dilution.



ARG43271 anti-ARL8B antibody WB image

Western blot: 25 µg of LO2 cell lysate stained with ARG43271 anti-ARL8B antibody at 1:3000 dilution.