

## ARG43286 anti-AREG / Amphiregulin antibody

Package: 100 µl  
Store at: -20°C

### Summary

Product Description	Rabbit Polyclonal antibody recognizes AREG / Amphiregulin
Tested Reactivity	Ms
Tested Application	ICC/IF
Host	Rabbit
Clonality	Polyclonal
Isotype	IgG
Target Name	AREG / Amphiregulin
Species	Human
Immunogen	Recombinant fusion protein corresponding to aa. 20-252 of Human AREG / Amphiregulin (NP_001648.1).
Conjugation	Un-conjugated
Alternate Names	Amphiregulin; AREGB; CRDGF; SDGF; AR; Colorectum cell-derived growth factor

### Application Instructions

Application table	Application	Dilution
	ICC/IF	1:50 - 1:200
Application Note	* The dilutions indicate recommended starting dilutions and the optimal dilutions or concentrations should be determined by the scientist.	

### Properties

Form	Liquid
Purification	Affinity purified.
Buffer	PBS (pH 7.3), 0.02% Sodium azide and 50% Glycerol.
Preservative	0.02% Sodium azide
Stabilizer	50% Glycerol
Storage instruction	For continuous use, store undiluted antibody at 2-8°C for up to a week. For long-term storage, aliquot and store at -20°C. Storage in frost free freezers is not recommended. Avoid repeated freeze/thaw cycles. Suggest spin the vial prior to opening. The antibody solution should be gently mixed before use.
Note	For laboratory research only, not for drug, diagnostic or other use.

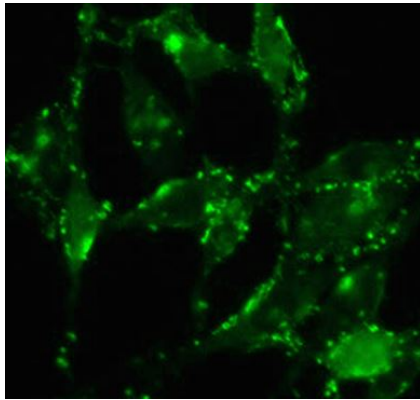
### Bioinformation

Gene Symbol	AREG
-------------	------

Gene Full Name	amphiregulin
Background	The protein encoded by this gene is a member of the epidermal growth factor family. It is an autocrine growth factor as well as a mitogen for astrocytes, Schwann cells and fibroblasts. It is related to epidermal growth factor (EGF) and transforming growth factor alpha (TGF-alpha). The protein interacts with the EGF/TGF-alpha receptor to promote the growth of normal epithelial cells, and it inhibits the growth of certain aggressive carcinoma cell lines. It also functions in mammary gland, oocyte and bone tissue development. This gene is associated with a psoriasis-like skin phenotype, and is also associated with other pathological disorders, including various types of cancers and inflammatory conditions. [provided by RefSeq, Apr 2014]
Function	Ligand of the EGF receptor/EGFR. Autocrine growth factor as well as a mitogen for a broad range of target cells including astrocytes, Schwann cells and fibroblasts. [UniProt]
Calculated Mw	28 kDa
Cellular Localization	Membrane; Single-pass membrane protein. [UniProt]

## Images

---



ARG43286 anti-AREG / Amphiregulin antibody ICC/IF image

Immunofluorescence: HeLa cells stained with ARG43286 anti-AREG / Amphiregulin antibody at 1:100 dilution.

---