

ARG43287 anti-AREG / Amphiregulin antibody

Package: 50 µg
Store at: -20°C

Summary

Product Description	Rabbit Polyclonal antibody recognizes AREG / Amphiregulin
Tested Reactivity	Ms, Rat
Tested Application	IHC-P, WB
Host	Rabbit
Clonality	Polyclonal
Isotype	IgG
Target Name	AREG / Amphiregulin
Species	Mouse
Immunogen	Recombinant protein corresponding to V100-K191 of Mouse AREG / Amphiregulin.
Conjugation	Un-conjugated
Alternate Names	Amphiregulin; AREGB; CRDGF; SDGF; AR; Colorectum cell-derived growth factor

Application Instructions

Application table	Application	Dilution
	IHC-P	1:200 - 1:1000
	WB	1:500 - 1:2000
Application Note	IHC-P: Antigen Retrieval: Heat mediation was performed in EDTA buffer (pH 8.0). * The dilutions indicate recommended starting dilutions and the optimal dilutions or concentrations should be determined by the scientist.	
Positive Control	Rat brain and Mouse brain	
Observed Size	~ 40 kDa	

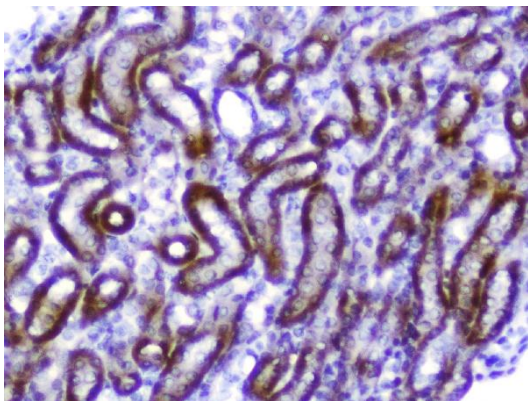
Properties

Form	Liquid
Purification	Affinity purification with immunogen.
Buffer	0.2% Na ₂ HPO ₄ , 0.9% NaCl, 0.05% Sodium azide and 4% Trehalose.
Preservative	0.05% Sodium azide
Stabilizer	4% Trehalose
Concentration	0.5 mg/ml
Storage instruction	For continuous use, store undiluted antibody at 2-8°C for up to a week. For long-term storage, aliquot and store at -20°C or below. Storage in frost free freezers is not recommended. Avoid repeated freeze/thaw cycles. Suggest spin the vial prior to opening. The antibody solution should be gently mixed before use.

Bioinformation

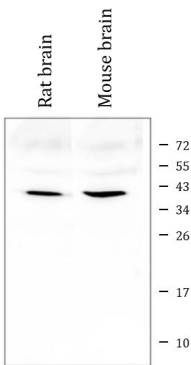
Gene Symbol	AREG
Gene Full Name	amphiregulin
Background	The protein encoded by this gene is a member of the epidermal growth factor family. It is an autocrine growth factor as well as a mitogen for astrocytes, Schwann cells and fibroblasts. It is related to epidermal growth factor (EGF) and transforming growth factor alpha (TGF-alpha). The protein interacts with the EGF/TGF-alpha receptor to promote the growth of normal epithelial cells, and it inhibits the growth of certain aggressive carcinoma cell lines. It also functions in mammary gland, oocyte and bone tissue development. This gene is associated with a psoriasis-like skin phenotype, and is also associated with other pathological disorders, including various types of cancers and inflammatory conditions. [provided by RefSeq, Apr 2014]
Function	Ligand of the EGF receptor/EGFR. Autocrine growth factor as well as a mitogen for a broad range of target cells including astrocytes, Schwann cells and fibroblasts. [UniProt]
Calculated Mw	28 kDa
Cellular Localization	Membrane; Single-pass membrane protein. [UniProt]

Images



ARG43287 anti-AREG / Amphiregulin antibody IHC-P image

Immunohistochemistry: Paraffin-embedded Mouse kidney tissue. Antigen Retrieval: Heat mediation was performed in EDTA buffer (pH 8.0). The tissue section was blocked with 10% goat serum. The tissue section was then stained with ARG43287 anti-AREG / Amphiregulin antibody at 1 µg/ml dilution, overnight at 4°C.



ARG43287 anti-AREG / Amphiregulin antibody WB image

Western blot: 50 µg of sample under reducing conditions. Rat brain and Mouse brain lysates stained with ARG43287 anti-AREG / Amphiregulin antibody at 0.5 µg/ml dilution, overnight at 4°C.