

## ARG43301 anti-Caspase 3 phospho (Ser150) antibody

Package: 50 µl  
Store at: -20°C

### Summary

Product Description	Rabbit Polyclonal antibody recognizes Caspase 3 phospho (Ser150)
Tested Reactivity	Hu, Ms, Rat
Tested Application	IHC-P, WB
Specificity	This antibody detects endogenous levels of Caspase 3 protein only when phosphorylated at Ser150.
Host	Rabbit
Clonality	Polyclonal
Isotype	IgG
Target Name	Caspase 3
Species	Human
Immunogen	Phosphospecific peptide around Ser150 of Human Caspase 3.
Conjugation	Un-conjugated
Alternate Names	CASP3; Caspase 3; Apopain; CPP32; CPP32B; Caspase 3, Apoptosis-Related Cysteine Peptidase; Caspase 3, Apoptosis-Related Cysteine Protease; SREBP Cleavage Activity 1; Cysteine Protease CPP32; Protein Yama; EC 3.4.22.56; Caspase-3; CASP-3; CPP-32; SCA-1; Yama; PARP Cleavage Protease; Procaspase3; EC 3.4.22

### Application Instructions

Application table	Application	Dilution
	IHC-P	1:100 - 1:300
	WB	1:500 - 1:2000
Application Note	IHC-P: Antigen Retrieval: Heat mediation was performed in Citrate buffer. * The dilutions indicate recommended starting dilutions and the optimal dilutions or concentrations should be determined by the scientist.	
Positive Control	HBE	
Observed Size	~ 32 kDa	

### Properties

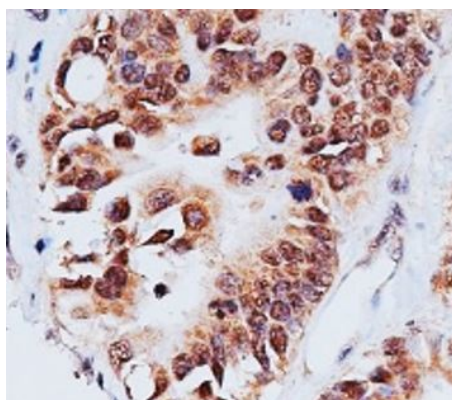
Form	Liquid
Purification	Affinity purification with immunogen.
Buffer	PBS, 0.02% Sodium azide, 50% Glycerol and 0.5% BSA.
Preservative	0.02% Sodium azide
Stabilizer	50% Glycerol and 0.5% BSA

Concentration	1 mg/ml
Storage instruction	For continuous use, store undiluted antibody at 2-8°C for up to a week. For long-term storage, aliquot and store at -20°C. Storage in frost free freezers is not recommended. Avoid repeated freeze/thaw cycles. Suggest spin the vial prior to opening. The antibody solution should be gently mixed before use.
Note	For laboratory research only, not for drug, diagnostic or other use.

## Bioinformation

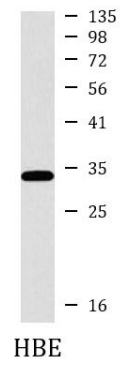
Gene Symbol	CASP3
Gene Full Name	caspase 3, apoptosis-related cysteine peptidase
Background	The protein encoded by this gene is a cysteine-aspartic acid protease that plays a central role in the execution-phase of cell apoptosis. The encoded protein cleaves and inactivates poly(ADP-ribose) polymerase while it cleaves and activates sterol regulatory element binding proteins as well as caspases 6, 7, and 9. This protein itself is processed by caspases 8, 9, and 10. It is the predominant caspase involved in the cleavage of amyloid-beta 4A precursor protein, which is associated with neuronal death in Alzheimer's disease. [provided by RefSeq, Aug 2017]
Function	Cleaves XRCC4 and phospholipid scramblase proteins XKR4, XKR8 and XKR9, leading to promote phosphatidylserine exposure on apoptotic cell surface. [UniProt]
Highlight	Related Antibody Duos and Panels: <a href="#">ARG30105 Apoptosis Marker Antibody Duo (Caspase3, PARP)</a> <a href="#">ARG30110 Mitochondria/Caspase dependant Apoptosis Antibody Panel (Caspase3, Caspase9, Cytochrome c, PARP) (WB)</a> Related products: <a href="#">Caspase 3 antibodies;</a> <a href="#">Caspase 3 Duos / Panels;</a>
Research Area	Cancer antibody; Cell Biology and Cellular Response antibody; Cell Death antibody; Neuroscience antibody; Apoptosis Marker antibody; Mitochondria/Caspase Dependant Apoptosis Marker antibody
Calculated Mw	32 kDa
PTM	Acetylation, Phosphoprotein, S-nitrosylation, Zymogen. [UniProt]
Cellular Localization	Cytoplasm. [UniProt]

## Images



ARG43301 anti-Caspase 3 phospho (Ser150) antibody IHC-P image

Immunohistochemistry: Formaldehyde fixed and Paraffin-embedded Human colon cancer tissue. Antigen Retrieval: Heat mediation was performed in Citrate buffer. The sample was blocked and stained with ARG43301 anti-Caspase 3 phospho (Ser150) antibody at 1:50 dilution, for 1.5 hours at 22°C.



#### ARG43301 anti-Caspase 3 phospho (Ser150) antibody WB image

Western blot: HBE cell lysate stained with ARG43301 anti-Caspase 3 phospho (Ser150) antibody.