

ARG43364 anti-GDNF Receptor alpha 1 antibody

Package: 50 µg
Store at: -20°C

Summary

| | |
|---------------------|---|
| Product Description | Rabbit Polyclonal antibody recognizes GDNF Receptor alpha 1 |
| Tested Reactivity | Hu |
| Tested Application | IHC-P, WB |
| Host | Rabbit |
| Clonality | Polyclonal |
| Isotype | IgG |
| Target Name | GDNF Receptor alpha 1 |
| Species | Human |
| Immunogen | Recombinant protein corresponding to D25-Q227 of Human GDNF Receptor alpha 1. |
| Conjugation | Un-conjugated |
| Alternate Names | GDNFR-alpha-1; GDNFRA; GFR-ALPHA-1; RET ligand 1; GFR-alpha-1; RET1L; GDNF receptor alpha-1; TRNR1; TGF-beta-related neurotrophic factor receptor 1; RETL1; GDNFR; GDNF family receptor alpha-1 |

Application Instructions

| Application table | Application | Dilution |
|-------------------|--|----------------|
| | IHC-P | 1:200 - 1:1000 |
| | WB | 1:500 - 1:2000 |
| Application Note | * The dilutions indicate recommended starting dilutions and the optimal dilutions or concentrations should be determined by the scientist. | |
| Positive Control | Human placenta | |
| Observed Size | ~ 51 kDa | |

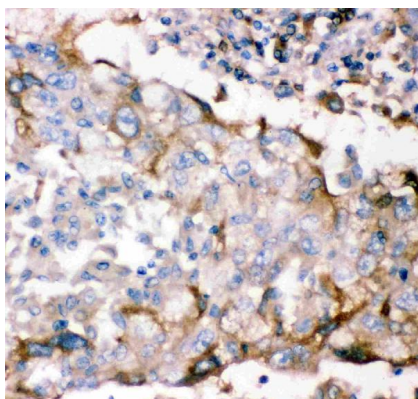
Properties

| | |
|---------------------|--|
| Form | Liquid |
| Purification | Affinity purification with immunogen. |
| Buffer | 0.2% Na2HPO4, 0.9% NaCl, 0.05% Sodium azide and 5% BSA. |
| Preservative | 0.05% Sodium azide |
| Stabilizer | 5% BSA |
| Concentration | 0.5 mg/ml |
| Storage instruction | For continuous use, store undiluted antibody at 2-8°C for up to a week. For long-term storage, aliquot and store at -20°C or below. Storage in frost free freezers is not recommended. Avoid repeated freeze/thaw cycles. Suggest spin the vial prior to opening. The antibody solution should be gently mixed before use. |

Bioinformation

| | |
|-----------------------|---|
| Gene Symbol | GFRA1 |
| Gene Full Name | GDNF family receptor alpha 1 |
| Background | This gene encodes a member of the glial cell line-derived neurotrophic factor receptor (GDNFR) family of proteins. The encoded preproprotein is proteolytically processed to generate the mature receptor. Glial cell line-derived neurotrophic factor (GDNF) and neurturin (NTN) are two structurally related, potent neurotrophic factors that play key roles in the control of neuron survival and differentiation. This receptor is a glycosylphosphatidylinositol (GPI)-linked cell surface receptor for both GDNF and NTN, and mediates activation of the RET tyrosine kinase receptor. This gene is a candidate gene for Hirschsprung disease. Alternative splicing results in multiple transcript variants, at least one of which encodes a preproprotein that is proteolytically processed. [provided by RefSeq, Jan 2016] |
| Function | Receptor for GDNF. Mediates the GDNF-induced autophosphorylation and activation of the RET receptor (By similarity). [UniProt] |
| Calculated Mw | 51 kDa |
| Cellular Localization | Cell membrane; Lipid-anchor, GPI-anchor. [UniProt] |

Images



ARG43364 anti-GDNF Receptor alpha 1 antibody IHC-P image

Immunohistochemistry: Paraffin-embedded Human lung cancer tissue stained with ARG43364 anti-GDNF Receptor alpha 1 antibody.



Human placenta

ARG43364 anti-GDNF Receptor alpha 1 antibody WB image

Western blot: 50 µg of Human placenta lysate stained with ARG43364 anti-GDNF Receptor alpha 1 antibody at 0.5 µg/ml dilution.