

## ARG43381 anti-PPP2R1A antibody

Package: 100 µl  
Store at: -20°C

### Summary

Product Description	Rabbit Polyclonal antibody recognizes PPP2R1A
Tested Reactivity	Hu, Ms, Rat
Tested Application	ICC/IF, WB
Host	Rabbit
Clonality	Polyclonal
Isotype	IgG
Target Name	PPP2R1A
Species	Human
Immunogen	Recombinant fusion protein corresponding to aa. 1-270 of Human PPP2R1A (NP_055040.2).
Conjugation	Un-conjugated
Alternate Names	Medium tumor antigen-associated 61 kDa protein; PP2A subunit A isoform R1-alpha; PP2A-Aalpha; PR65A; PP2A subunit A isoform PR65-alpha; Serine/threonine-protein phosphatase 2A 65 kDa regulatory subunit A alpha isoform; MRD36; PP2AAALPHA

### Application Instructions

Application table	Application	Dilution
	ICC/IF	1:50 - 1:200
	WB	1:500 - 1:2000
Application Note	* The dilutions indicate recommended starting dilutions and the optimal dilutions or concentrations should be determined by the scientist.	
Positive Control	MCF7	
Observed Size	~ 63 kDa	

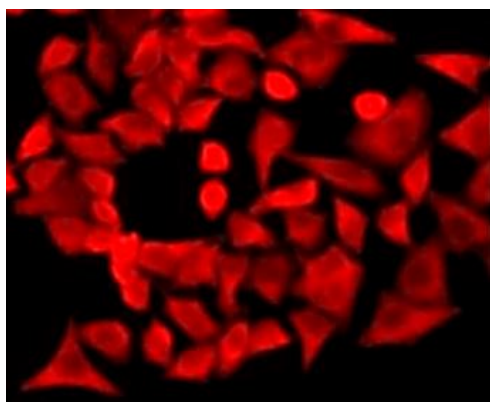
### Properties

Form	Liquid
Purification	Affinity purified.
Buffer	PBS (pH 7.3), 0.02% Sodium azide and 50% Glycerol.
Preservative	0.02% Sodium azide
Stabilizer	50% Glycerol
Storage instruction	For continuous use, store undiluted antibody at 2-8°C for up to a week. For long-term storage, aliquot and store at -20°C. Storage in frost free freezers is not recommended. Avoid repeated freeze/thaw cycles. Suggest spin the vial prior to opening. The antibody solution should be gently mixed before use.

## Bioinformation

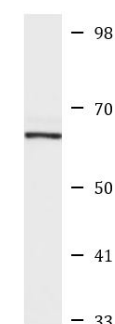
Gene Symbol	PPP2R1A
Gene Full Name	protein phosphatase 2, regulatory subunit A, alpha
Background	This gene encodes a constant regulatory subunit of protein phosphatase 2. Protein phosphatase 2 is one of the four major Ser/Thr phosphatases, and it is implicated in the negative control of cell growth and division. It consists of a common heteromeric core enzyme, which is composed of a catalytic subunit and a constant regulatory subunit, that associates with a variety of regulatory subunits. The constant regulatory subunit A serves as a scaffolding molecule to coordinate the assembly of the catalytic subunit and a variable regulatory B subunit. This gene encodes an alpha isoform of the constant regulatory subunit A. Alternatively spliced transcript variants have been described. [provided by RefSeq, Apr 2010]
Function	The PR65 subunit of protein phosphatase 2A serves as a scaffolding molecule to coordinate the assembly of the catalytic subunit and a variable regulatory B subunit. Upon interaction with GNA12 promotes dephosphorylation of microtubule associated protein TAU/MAPT (PubMed:15525651). Required for proper chromosome segregation and for centromeric localization of SGO1 in mitosis (PubMed:16580887). [UniProt]
Calculated Mw	65 kDa
Cellular Localization	Cytoplasm. Chromosome, centromere. Lateral cell membrane. Cell projection, dendrite. Note=Centromeric localization requires the presence of BUB1. [UniProt]

## Images



ARG43381 anti-PPP2R1A antibody ICC/IF image

Immunofluorescence: U2OS cells stained with ARG43381 anti-PPP2R1A antibody.



MCF7

ARG43381 anti-PPP2R1A antibody WB image

Western blot: 25 µg of MCF7 cell lysate stained with ARG43381 anti-PPP2R1A antibody at 1:500 dilution.