

ARG43382 anti-ATG2A antibody

Package: 100 µl
Store at: -20°C

Summary

| | |
|---------------------|--|
| Product Description | Rabbit Polyclonal antibody recognizes ATG2A |
| Tested Reactivity | Hu |
| Tested Application | WB |
| Host | Rabbit |
| Clonality | Polyclonal |
| Isotype | IgG |
| Target Name | ATG2A |
| Species | Human |
| Immunogen | Synthetic peptide within aa. 700-800 of Human ATG2A (NP_055919.2). |
| Conjugation | Un-conjugated |
| Alternate Names | Autophagy-related protein 2 homolog A |

Application Instructions

| Application table | <table> <tr> <th>Application</th><th>Dilution</th></tr> <tr> <td>WB</td><td>1:500 - 1:2000</td></tr> </table> | Application | Dilution | WB | 1:500 - 1:2000 |
|-------------------|--|-------------|----------|----|----------------|
| Application | Dilution | | | | |
| WB | 1:500 - 1:2000 | | | | |
| Application Note | * The dilutions indicate recommended starting dilutions and the optimal dilutions or concentrations should be determined by the scientist. | | | | |
| Positive Control | U-87MG | | | | |
| Observed Size | ~ 213 kDa | | | | |

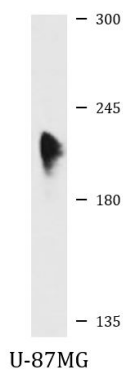
Properties

| | |
|---------------------|---|
| Form | Liquid |
| Purification | Affinity purified. |
| Buffer | PBS (pH 7.3), 0.02% Sodium azide and 50% Glycerol. |
| Preservative | 0.02% Sodium azide |
| Stabilizer | 50% Glycerol |
| Storage instruction | For continuous use, store undiluted antibody at 2-8°C for up to a week. For long-term storage, aliquot and store at -20°C. Storage in frost free freezers is not recommended. Avoid repeated freeze/thaw cycles. Suggest spin the vial prior to opening. The antibody solution should be gently mixed before use. |
| Note | For laboratory research only, not for drug, diagnostic or other use. |

Bioinformation

| | |
|-----------------------|--|
| Gene Symbol | ATG2A |
| Gene Full Name | autophagy related 2A |
| Function | Involved in autophagosome assembly, regulating the size of nascent autophagosomes (PubMed:28561066). Also regulates lipid droplets morphology and distribution within the cell (PubMed:22219374, PubMed:28561066). [UniProt] |
| Calculated Mw | 213 kDa |
| Cellular Localization | Preautophagosomal structure membrane; Peripheral membrane protein. Lipid droplet. [UniProt] |

Images



ARG43382 anti-ATG2A antibody WB image

Western blot: 25 µg of U-87MG cell lysate stained with ARG43382 anti-ATG2A antibody at 1:1000 dilution.