

ARG43397 anti-IL10R subunit beta antibody

Package: 100 µl
Store at: -20°C

Summary

Product Description	Rabbit Polyclonal antibody recognizes IL10R subunit beta
Tested Reactivity	Hu, Ms, Rat
Tested Application	ICC/IF, WB
Host	Rabbit
Clonality	Polyclonal
Isotype	IgG
Target Name	IL10R subunit beta
Species	Human
Immunogen	Recombinant fusion protein corresponding to aa. 20-220 of Human IL10R subunit beta (NP_000619.3).
Conjugation	Un-conjugated
Alternate Names	Cytokine receptor family 2 member 4; CRFB4; IL-10RB; CRF2-4; Interleukin-10 receptor subunit 2; IL-10R2; D21S66; CD antigen CDw210b; IL-10R subunit 2; Interleukin-10 receptor subunit beta; D21S58; Cytokine receptor class-II member 4; CDW210B; IL-10R subunit beta; IL-10 receptor subunit beta

Application Instructions

Application table	Application	Dilution
	ICC/IF	1:50 - 1:200
	WB	1:500 - 1:2000
Application Note	* The dilutions indicate recommended starting dilutions and the optimal dilutions or concentrations should be determined by the scientist.	
Positive Control	Jurkat and U-87MG	
Observed Size	37 kDa	

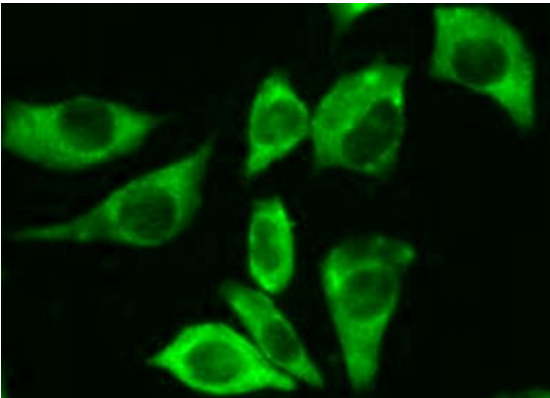
Properties

Form	Liquid
Purification	Affinity purified.
Buffer	PBS (pH 7.3), 0.02% Sodium azide and 50% Glycerol.
Preservative	0.02% Sodium azide
Stabilizer	50% Glycerol
Storage instruction	For continuous use, store undiluted antibody at 2-8°C for up to a week. For long-term storage, aliquot and store at -20°C. Storage in frost free freezers is not recommended. Avoid repeated freeze/thaw cycles. Suggest spin the vial prior to opening. The antibody solution should be gently mixed before use.

Bioinformation

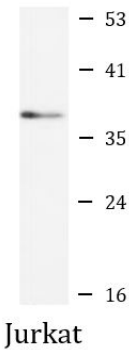
Gene Symbol	IL10RB
Gene Full Name	interleukin 10 receptor, beta
Background	The protein encoded by this gene belongs to the cytokine receptor family. It is an accessory chain essential for the active interleukin 10 receptor complex. Coexpression of this and IL10RA proteins has been shown to be required for IL10-induced signal transduction. This gene and three other interferon receptor genes, IFAR2, IFNAR1, and IFNGR2, form a class II cytokine receptor gene cluster located in a small region on chromosome 21. [provided by RefSeq, Jul 2008]
Function	Shared cell surface receptor required for the activation of five class 2 cytokines: IL10, IL22, IL26, IL28, and IFNL1. The IFNLR1/IL10RB dimer is a receptor for the cytokine ligands IFNL2 and IFNL3 and mediates their antiviral activity. The ligand/receptor complex stimulate the activation of the JAK/STAT signaling pathway leading to the expression of IFN-stimulated genes (ISG), which contribute to the antiviral state. [UniProt]
Calculated Mw	37 kDa
Cellular Localization	Membrane; Single-pass type I membrane protein. [UniProt]

Images



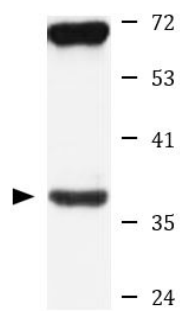
ARG43397 anti-IL10R subunit beta antibody ICC/IF image

Immunofluorescence: L929 cells stained with ARG43397 anti-IL10R subunit beta antibody at 1:100 dilution.



ARG43397 anti-IL10R subunit beta antibody WB image

Western blot: 25 µg of Jurkat cell lysate stained with ARG43397 anti-IL10R subunit beta antibody at 1:1000 dilution.



U-87MG

ARG43397 anti-IL10R subunit beta antibody WB image

Western blot: 25 µg of U-87MG cell lysate stained with ARG43397 anti-IL10R subunit beta antibody at 1:1000 dilution.